



Tierney Lane, Hammersmith, W6

£4,500 Per Month

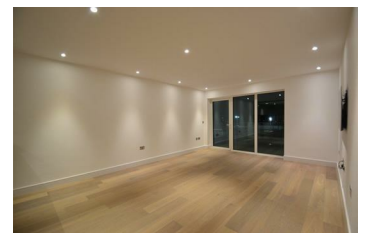
A modern luxurious two bedroom flat situated within this beautiful riverside development in Hammersmith.

The property comprises spacious reception room with a private balcony, a stylish open plan kitchen with wine cooler, two double bedrooms with built in wardrobes and two luxury bathrooms.

The property further benefits from 24-hour concierge, residents' gym, swimming pool, golf simulator, wine cellar, snooker table, cinema room and spa.

The development is ideally located within walking distance to Hammersmith underground station, which is serviced by the Circle, District, Piccadilly and Hammersmith & City lines.

- Modern development
- Two spacious bedrooms
- Residential gym
- Close to Hammersmith station
- Large reception with fantastic views
- Two luxurious bathrooms
- Swimming pool and sauna
- Stylish open plan kitchen views
- 24 hours concierge
- Lift



Energy Efficiency Rating		Environmental Impact (CO ₂) Rating	
Current	Target	Current	Target
 90 90 80 80 70 70 60 60 50 50 40 40 30 30 20 20 10 10 0 0 Not energy efficient - Higher heating costs	 90 90 80 80 70 70 60 60 50 50 40 40 30 30 20 20 10 10 0 0 Not energy efficient - Higher heating costs	 100 100 90 90 80 80 70 70 60 60 50 50 40 40 30 30 20 20 10 10 0 0 Not environmentally friendly - Higher CO ₂ emissions	 100 100 90 90 80 80 70 70 60 60 50 50 40 40 30 30 20 20 10 10 0 0 Not environmentally friendly - Higher CO ₂ emissions
England & Wales	England & Wales	England & Wales	England & Wales