



Flat 6, Chelsea Creek Park Street, London, SW6 2FS

Guide Price £1,852,200

Exquisite 2-Bedroom Apartment in Chelsea Creek

Welcome to the epitome of sophisticated urban living at Chelsea Creek. This exquisite 2-bedroom apartment offers contemporary design and unparalleled amenities, creating a luxurious lifestyle in the heart of London.

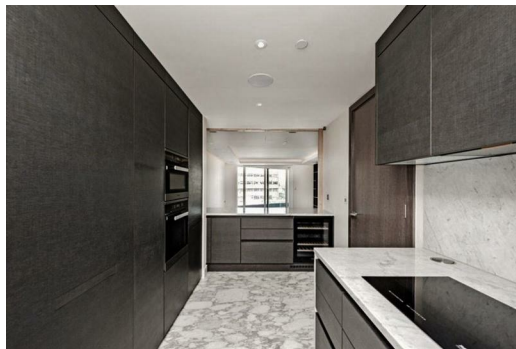
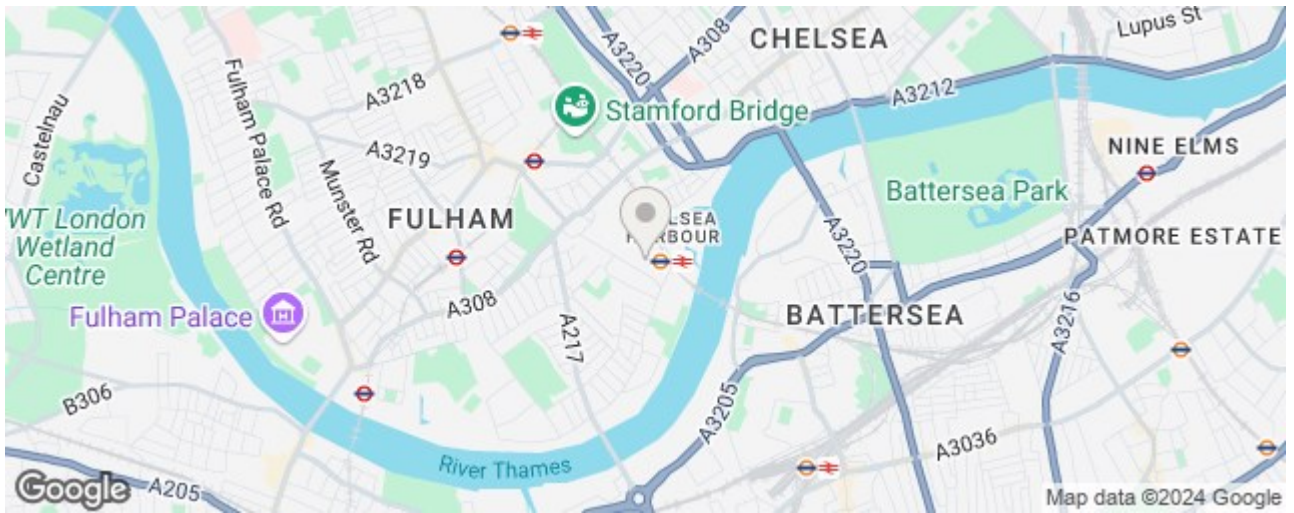
Prestigious Location: Nestled in the sought-after Chelsea Creek development, residents enjoy proximity to the Thames River, Chelsea Harbour, and the vibrant Chelsea neighborhood.

Modern Open Layout: The apartment features a modern and open layout, with high-quality finishes and premium materials, creating an inviting space for relaxation and entertainment.

Spacious Bedrooms: Two spacious bedrooms provide comfort and privacy, with the master bedroom boasting an en-suite bathroom designed for tranquility.

Exclusive Amenities: Residents benefit from exclusive use of The Spa, a state-of-the-art health and fitness centre with an indoor swimming pool, sauna, steam room, gymnasium, and treatment room. Additionally, enjoy managed car parking, 24-hour concierge service, and an unrivalled selection of shops, bars, restaurants, and leisure facilities within the development.

Priced at £1,852,200, this apartment offers an unparalleled opportunity to experience luxury living at its finest in one of London's most prestigious addresses. Contact us today to arrange a viewing and discover the sophistication of Chelsea Creek living firsthand.



Energy Efficiency Rating		Environmental Impact (CO ₂) Rating	
Current	Potential	Current	Potential
A	A	B	B
B	B	C	C
C	C	D	D
D	D	E	E
E	E	F	F
F	F	G	G
G	G		

Energy Efficiency Rating: 81 / 81
 Environmental Impact (CO₂) Rating: 81 / 81