



Apartment 27, Cascade Court 1 Sopwith Way, Nine Elms, London, SW11 8NS

Guide Price £1,750,000

Luxurious Riverside Living at Sopwith Way SW11

Experience unparalleled luxury in this brand new three-bedroom flat situated on the thirteenth floor within a prestigious development near the Thames River and Battersea Park. Boasting stunning views, spacious interiors, and an array of amenities, this property offers a lifestyle of sophistication and comfort.

Spectacular Riverside Views: Enjoy breathtaking views of the Thames River from your private balcony, providing a picturesque backdrop for daily living and entertaining.

Spacious Interiors: Step into generously sized living areas, including a spacious reception room and a brand new open-plan kitchen, perfect for hosting gatherings or relaxing in style.

Luxurious Bedrooms and Bathrooms: Retreat to three double bedrooms with built-in wardrobes and indulge in the luxury of two meticulously designed bathrooms, featuring sleek finishes and modern design.

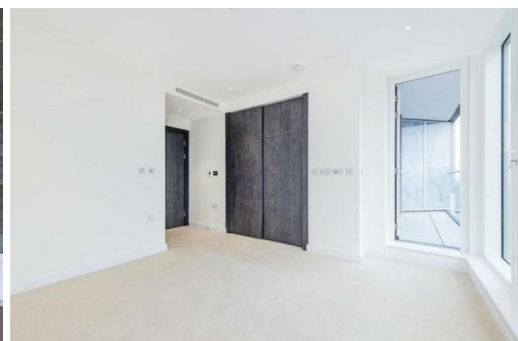
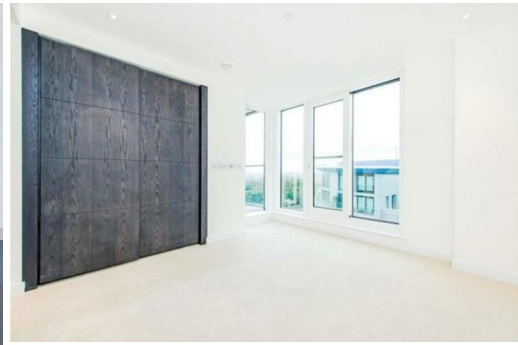
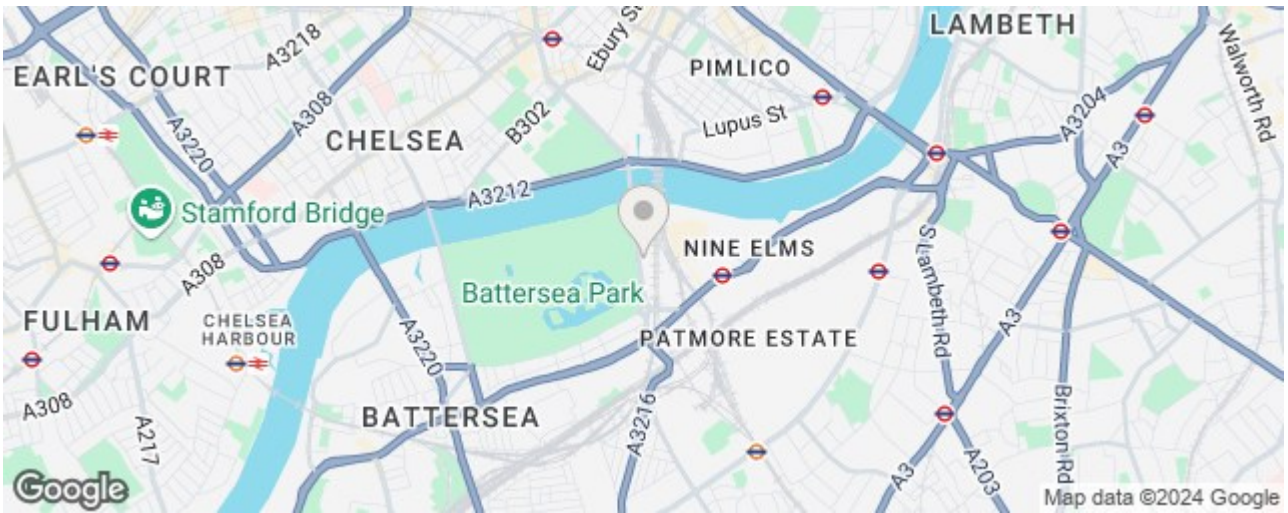
Premium Amenities: Benefit from exclusive amenities within the development, including 24-hour concierge service, residents' gym, swimming pool, sauna, and ample storage, enhancing your residential experience with convenience, relaxation, and wellness options.

Prestigious Location: Ideally located within walking distance to Battersea Park station and Queenstown Road station, residents enjoy easy access to transportation hubs and a wealth of cultural and recreational attractions.

Priced at £1,750,000, this luxurious flat presents a rare opportunity to own a piece of riverside elegance in one of London's most coveted locations. Contact us today to schedule a viewing and experience the epitome of luxurious riverside living firsthand.

Cascade Building

Approximate Gross Internal Area
1055 sq ft / 98 sq m



Energy Efficiency Rating		Environmental Impact (CO ₂) Rating	
Current	Potential	Current	Potential
A	A	B	B
B	B	C	C
C	C	D	D
D	D	E	E
E	E	F	F
F	F	G	G
G	G		

Energy Efficiency Rating: 83 / 83
Environmental Impact (CO₂) Rating: 83 / 83