



Meadows House Thurstan Street, London, SW6 2XB

Guide Price £1,075,000

Sleek Urban Living in Chelsea Creek

Step into sophistication with this modern 2-bed, 2-bath apartment nestled within one of London's most elegant dockside developments, Chelsea Creek. Designed for the contemporary urbanite, this residence offers a perfect blend of style, functionality, and convenience.

Stylish Modern Design: Experience the epitome of urban chic with sleek finishes and an open-plan kitchen/living area, creating a spacious and inviting ambiance ideal for modern living.

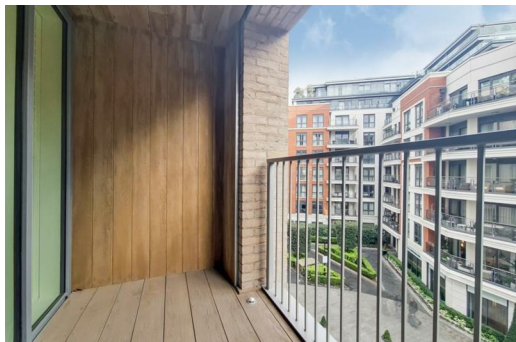
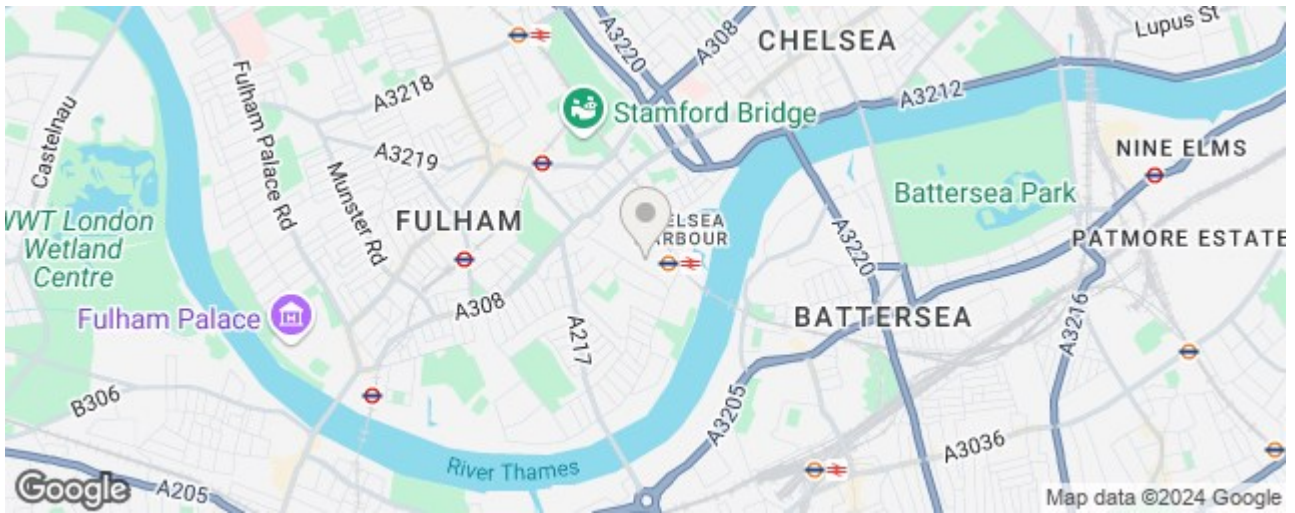
Balcony Oasis: Relax and unwind on your private balcony, offering a pleasant view and flooding the living space with natural light, providing the perfect spot to enjoy morning coffee or evening sunsets.

Prime Location: Situated in the prestigious Chelsea Creek, residents enjoy full access to London's efficient transport routes, with Imperial Wharf station just a minute's walk away, ensuring seamless connectivity to the city's vibrant offerings.

Luxurious Amenities: Indulge in the exclusive perks of 24-hour concierge service, a spa, health, and fitness center, elevating the residential experience with convenience and relaxation at your fingertips.

Managed Parking: Benefit from managed car parking, providing hassle-free access to parking facilities in the bustling city environment, ensuring both convenience and security for residents.

Priced at £1,150,000, this property represents a rare opportunity to own a piece of modern luxury in the heart of Chelsea Creek. Don't miss your chance to elevate your urban lifestyle - contact us today to schedule a viewing and experience the epitome of sleek urban living.



Energy Efficiency Rating		Environmental Impact (CO ₂) Rating	
Current	Potential	Current	Potential
A	A	B	B
B	B	C	C
C	C	D	D
D	D	E	E
E	E	F	F
F	F	G	G
G	G		

Energy Efficiency Rating: 82 / 82
 Environmental Impact (CO₂) Rating: 82 / 82