



Flat 3, 324a Goldhawk Road, London, W6 0XF

Guide Price £455,000

Property Overview:

Contemporary 1-bed 2nd-floor flat
Open plan kitchen/living room design
West Facing Balcony.

Key Points:

Modern and stylish finish throughout
Ideal for a young professional or couple
2 minutes walk to Stamford Brook Station
Perfect blend of work and leisure with a quick city commute
995 Years Remaining on Lease

Kitchen/Living Room:

Thoughtfully designed open-plan space
Ideal for entertaining guests or relaxing after work

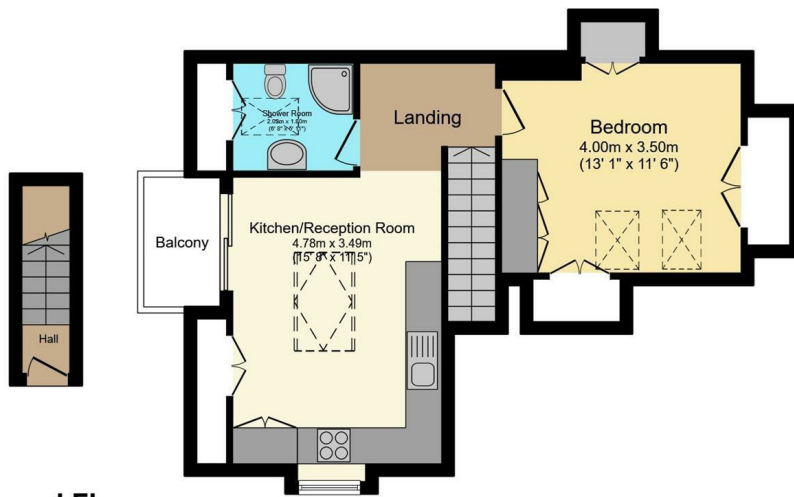
Balcony:

Private balcony offering city views and fresh air
Perfect for morning coffees or evening relaxation

Location:

Prime location on Goldhawk Road
2 minutes walk to Stamford Brook Station
Access to trendy cafes, boutique shops, and green spaces

This stylish and conveniently located flat on Goldhawk Road is not just a property; it's a lifestyle choice. Ideal for those who appreciate modern living, a quick city commute, and the perfect balance between work and leisure. Priced at £455,000, this gem won't stay on the market for long—schedule your viewing today!



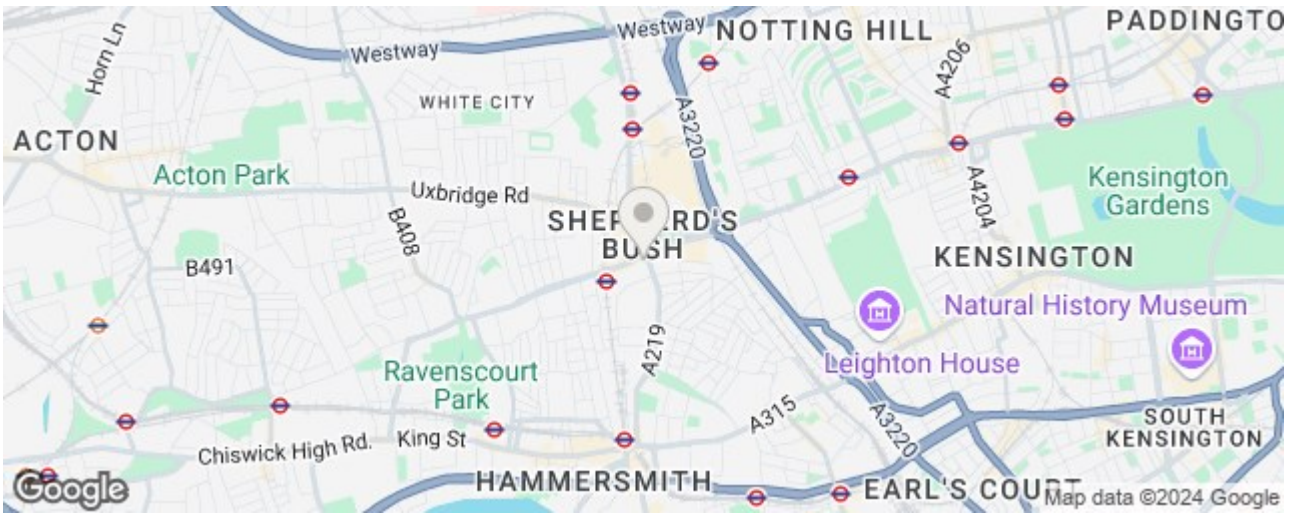
Ground Floor

First Floor



Total floor area 45.5 sq.m. (490 sq.ft.) approx

This floor plan is for illustrative purposes only. It is not drawn to scale. Any measurements, floor areas (including any total floor area), openings and orientation are approximate. No details are guaranteed, they cannot be relied upon for any purpose and they do not form part of any agreement. No liability is taken for any error, omission or misstatement. A party must rely upon its own inspection(s). Powered by www.focalagent.com



Energy Efficiency Rating		Environmental Impact (CO ₂) Rating	
Band	Score	Band	Score
A	82	A	82
B	82	B	82
C		C	
D		D	
E		E	
F		F	
G		G	

