



Rimini Woodland Drive, Hove

Offers Over £1,250,000

**MANSELL**  
**McTAGGART**  
Trusted since 1947



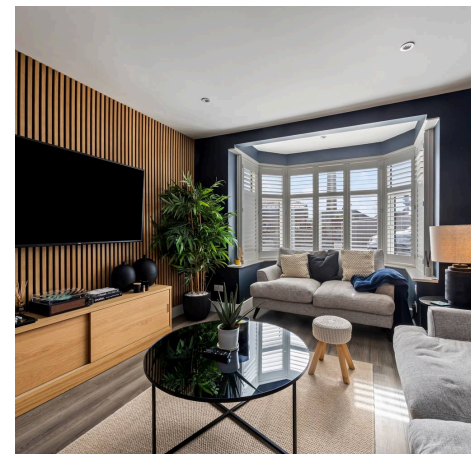
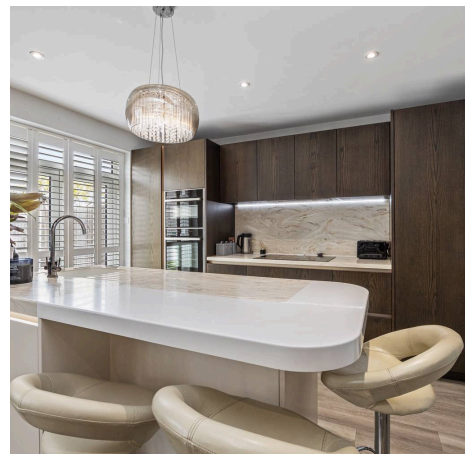
# Rimini Woodland Drive

Hove, Hove

Council Tax band: C

Tenure: Freehold

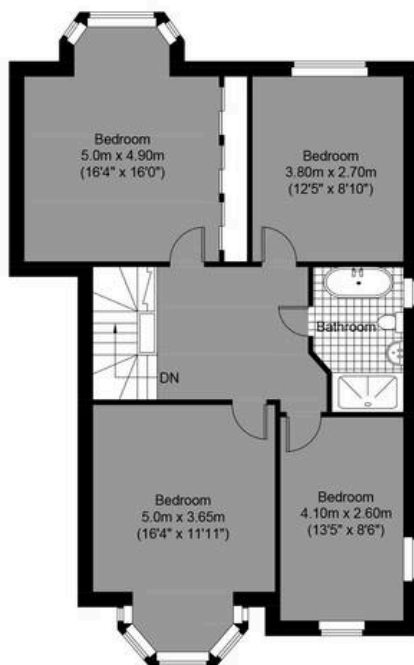
- Immaculate Four Bedroom Family Home And A Totally Separate Two Bedroom Attached Property For Sale
- Ideal For Multi-Generational Living!
- Two Separate Titles To Purchase Which May Assist With Purchasing Taxes
- Excellent Location Close To Hove Park, Transport Links, Shops And Schools
- Ideal Rental Opportunity
- Plush Open Plan Kitchen Dining Room With Separate Utility Room And High Quality Fitted Appliances In The Main Home
- Modern Living Room With Feature Wall And Large Box Bay Window With Bespoke Shutters In The Main Property
- Both Properties Benefit From Private Landscaped Rear Gardens
- Parking For Both Properties On The Driveway
- No Onward Chain



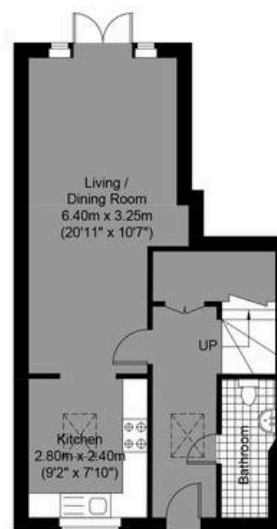
Approximate Gross Internal Area (Including Annex) = 213.18 sq m / 2294.65 sq ft



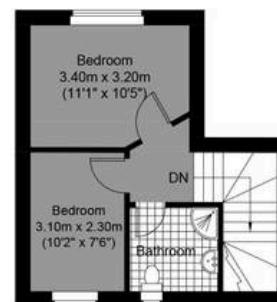
Ground Floor  
Approximate Floor Area  
813.10 sq ft (75.54 sq m)



First Floor  
Approximate Floor Area  
822.90 sq ft (76.45 sq m)



Annex Ground Floor  
Approximate Floor Area  
418.32 sq ft (38.91 sq m)



Annex First Floor  
Approximate Floor Area  
239.81 sq ft (22.28 sq m)



**Woodland Drive**

**MANSELL  
McTAGGART**  
Trusted since 1947

Illustration for identification purposed only, measurements are approximate, not to scale.

© Mansell McTaggart





## Mansell McTaggart Hove

170 Church Road, Hove - BN3 2DJ

01273 044929

[hove@mansellmctaggart.co.uk](mailto:hove@mansellmctaggart.co.uk)

[www.mansellmctaggart.co.uk/branch/hove/](http://www.mansellmctaggart.co.uk/branch/hove/)

