



8 Dolphin Court Hove Street, Hove

Offers Over £240,000

**MANSELL
McTAGGART**
Trusted since 1947



Mansell McTaggart Hove

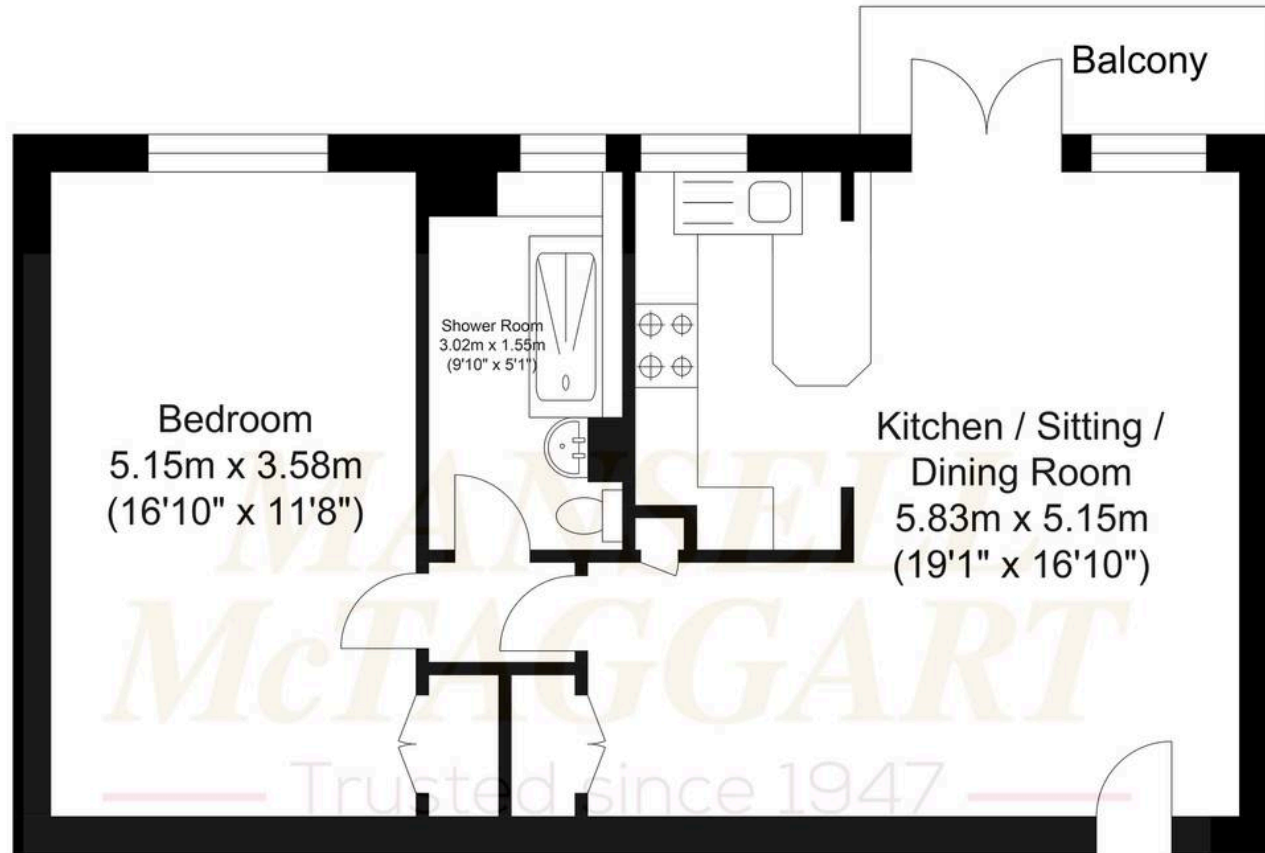
170 Church Road, Hove - BN3 2DJ

01273 044929

hove@mansellmctaggart.co.uk

www.mansellmctaggart.co.uk/branch/hove/





First Floor
Approximate Floor Area
526.57 sq ft
(48.92 sq m)

Approximate Gross Internal Area = 48.92 sq m / 526.57 sq ft
Illustration for identification purposes only, measurements are approximate, not to scale.

8 Dolphin Court Hove Street

Hove

Nestled within a prime Hove hotspot this spacious one double bedroom flat is offered to market with no onward chain and benefits from an idyllic South-facing balcony.

Council Tax band: B

Tenure: Leasehold

- One Double Bedroom Flat
- South-Facing Balcony
- Extended Lease On Completion
- Prime Central Hove Location
- A Stones' Throw Away From The Seafront And Local Amenities
- Exclusive To Mansell McTaggart
- Council Tax - B

