



RESIDE  
BOLTON



Stack Kampus

Aytoun Street, Manchester, M1 3GL

**£1,895 PCM**



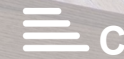
2



2



1



c



## Stack Kampus

Aytoun Street, Manchester, M1 3GL

Discover this outstanding two-bedroom two-bathroom apartment featuring an open plan lounge/kitchen – fully equipped with a washer/dryer, cooker, oven and fridge freezer.

Offering ample storage throughout the apartment, the spacious bedrooms also have fitted wardrobes. The stylish bathroom features a walk in shower, WC and wash basin with mirrored storage.

All apartments come with high-speed broadband included and ready from the moment you arrive, you'll also enjoy access to an impressive range of amenities designed to elevate your lifestyle. These include a fully equipped gym and studio with an in-house personal trainer, beautifully landscaped private resident terraces, and vibrant communal spaces with independent food and drink vendors located right on-site.

### KAMPUS

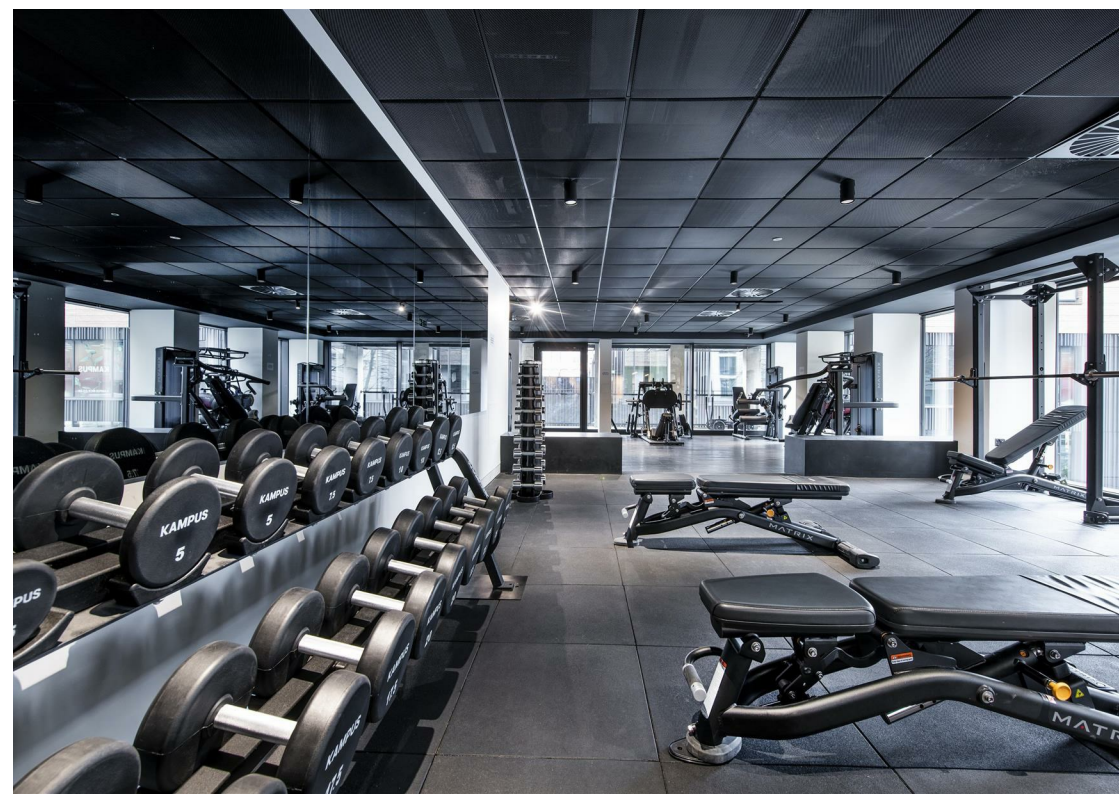
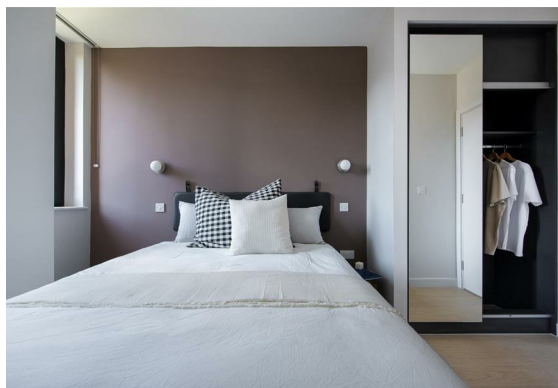
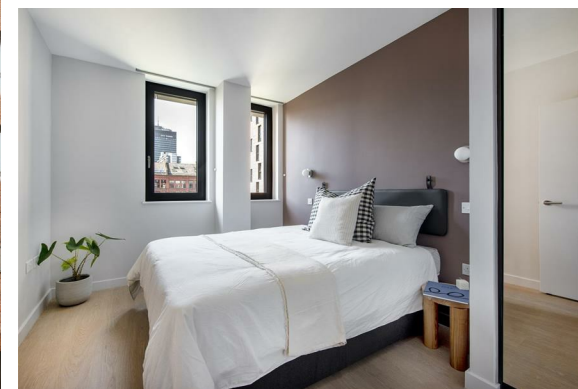
Welcome to Kampus, where modern city living meets comfort and convenience. Kampus is a metropolis of five buildings, North Block, South Block, The Stack, Minto and Turner and Minshull Warehouse surrounded by the city's best independent retailers, cafés, and cultural spots.

### Amenities

These include a fully equipped gym and studio with an in-house personal trainer, beautifully landscaped resident terraces, private dining room with space for up to 30 people, a cinema room, a dedicated residents' app, 24/7 concierge support, communal workspaces and much more!

Kampus is also pet friendly! Charges do apply.

- DEPOSIT ALTERNATIVES AVAILABLE
- 5th Floor Apartment



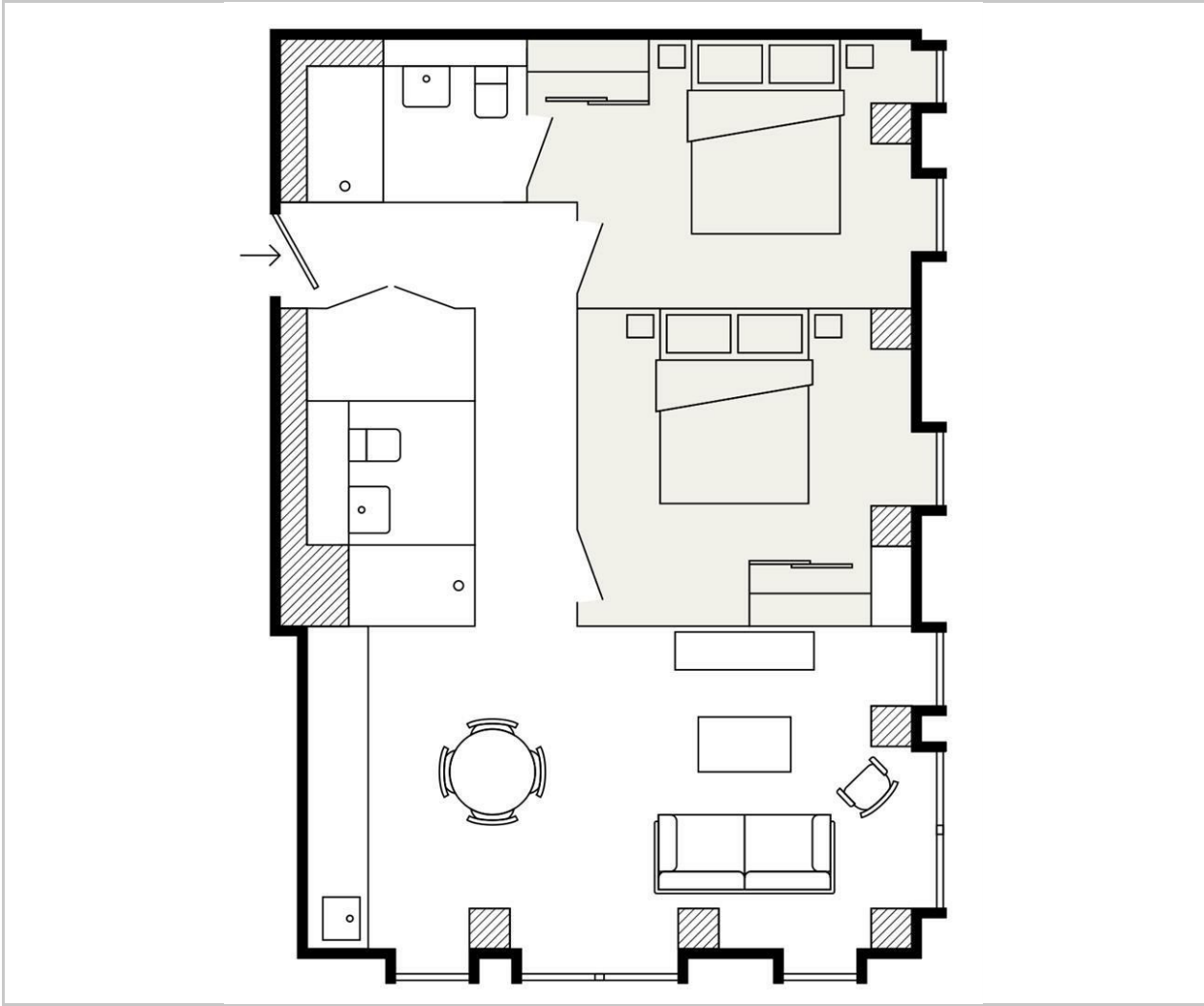




- 24/7 Concierge Service
- Residents Gym, Lounge, Dining & Cinema
- Available Immediately
- EPC Rating C
- On-Site Independent Food & Drink Vendors
- Fully Furnished
- High-Speed Broadband Included
- Resident Events & App



Floor Plan

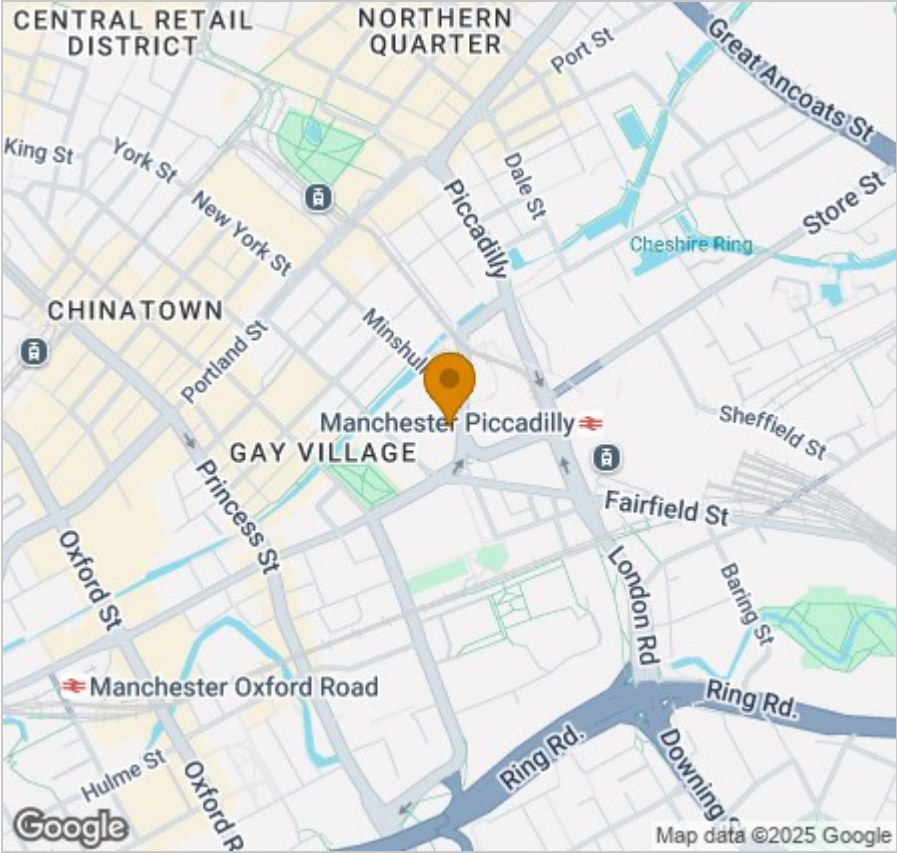


Viewing

Please contact our Reside Bolton Office on 0161 808 0408 if you wish to arrange a viewing appointment for this property or require further information.

These particulars, whilst believed to be accurate are set out as a general outline only for guidance and do not constitute any part of an offer or contract. Intending purchasers should not rely on them as statements of representation of fact, but must satisfy themselves by inspection or otherwise as to their accuracy. No person in this firms employment has the authority to make or give any representation or warranty in respect of the property.

Area Map



Energy Efficiency Graph

