



RESIDE

BOLTON



301 Stack 44 Aytoun Street  
Piccadilly, Manchester, M1 3GL

**£1,395 PCM**





## 301 Stack 44 Aytoun Street

Piccadilly, Manchester, M1 3GL

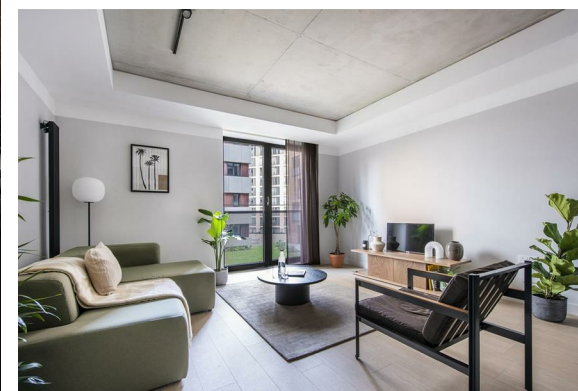
Kampus - Available to move into immediately. A stunning 3rd floor apartment, 24/7 concierge and gym, roof terraces, communal workspaces, private dining, cinema room and we are pet friendly. Vibrant communal gardens and the best independent commercial units overlooking Manchester's canal side. We'd recommend you book the viewing now!

When it comes to renting at Kampus, life couldn't be easier. All the apartments are inclusive of broadband ready from the day you move in. Curated events, Residents app and free access to the state-of-the-art amenities including our gym & studio, in-house Personal Trainer, roof top yoga, residents lounge, private dining & cinema room serviced by our amazing Independent Food and Drink. Let's not forget our on-site team here for you 24/7.

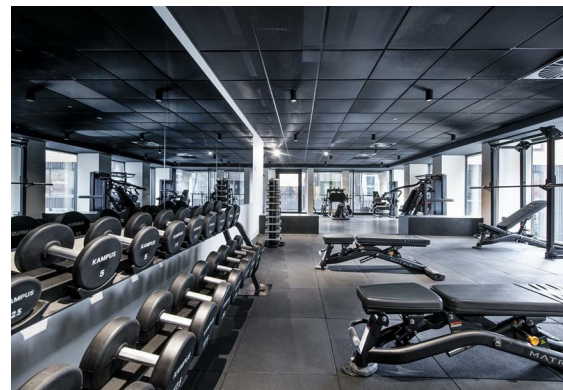
Kampus has its very own Pollen Bakery and is home to Manchester's best restaurants and bars - Nell's, Yum Cha & Beeswing with many more opening!

Parking and pet charges apply - please contact team for details.

- Extremely Central Location
- A Range Of Unique Apartments
- 24 Hour Concierge
- Residents Gym, Lounge, Dining & Cinema
- Available Immediately
- EPC Rating B
- Co-working Space
- Furnished Throughout
- Wifi Included
- Resident Events

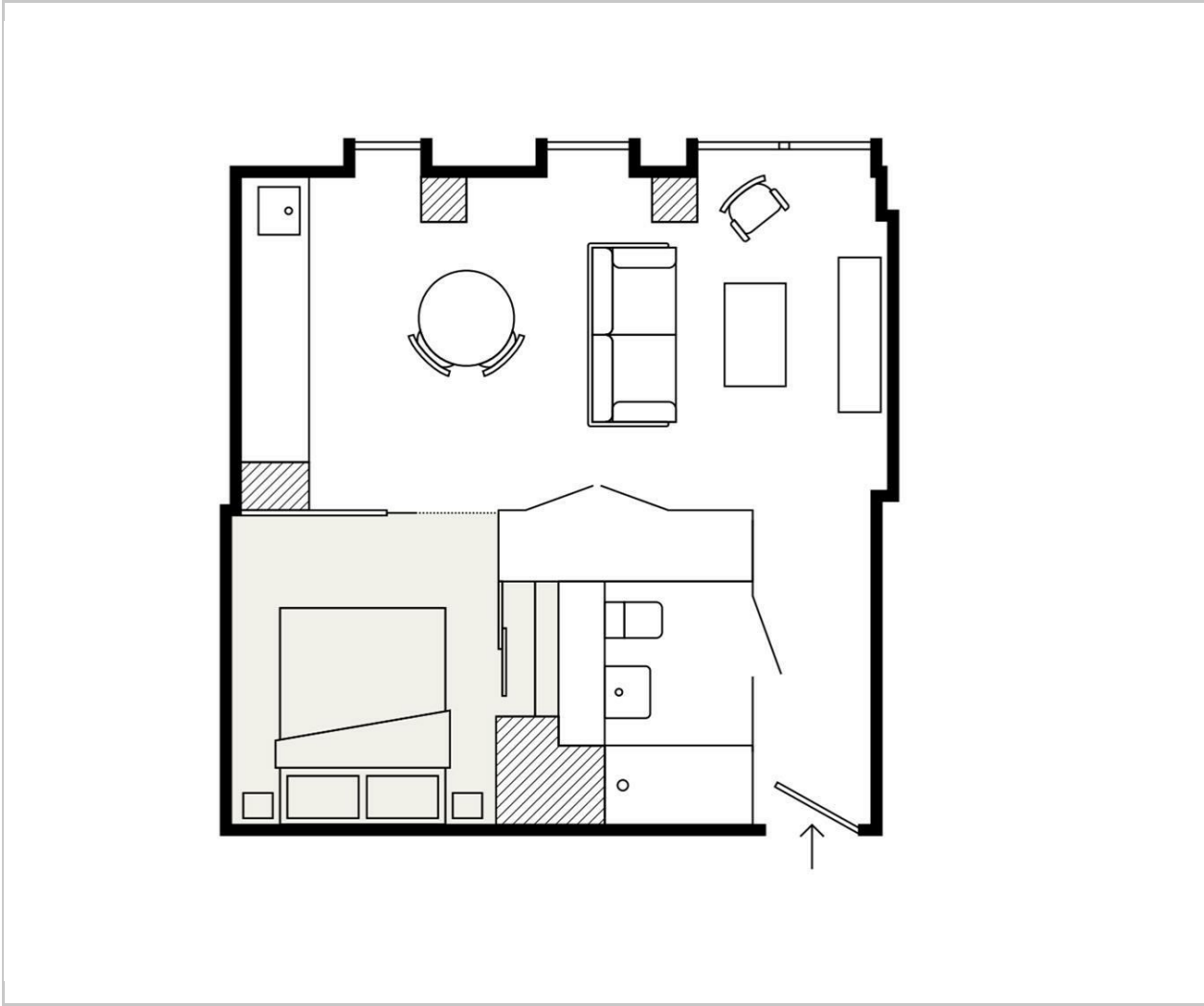








Floor Plan

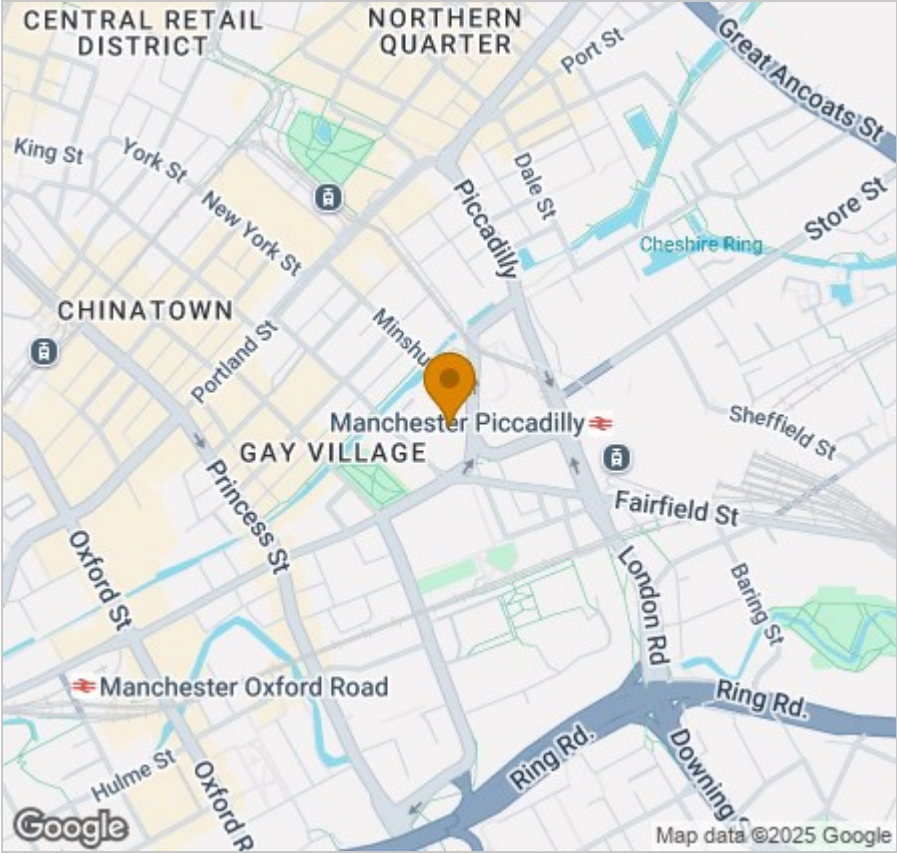


Viewing

Please contact our Reside Bolton Office on 0161 808 0408 if you wish to arrange a viewing appointment for this property or require further information.

These particulars, whilst believed to be accurate are set out as a general outline only for guidance and do not constitute any part of an offer or contract. Intending purchasers should not rely on them as statements of representation of fact, but must satisfy themselves by inspection or otherwise as to their accuracy. No person in this firms employment has the authority to make or give any representation or warranty in respect of the property.

Area Map



Energy Efficiency Graph

