

NEIGHBOUR- HOOD.

Moor Lane, Bolton



A New Urban Quarter

Neighbourhood homes create welcoming and diverse communities with a firm commitment to sustainability and high quality design.

N

Neighbourhood is a brand of homes by award winning place makers, Step Places.

B

Bolton Moor Lane will include 22 three bedroom homes in a prime location surrounded by new green spaces and vibrant amenities.

H

Homes for the future, with sustainability & low energy principles in mind.



LOCATION

Welcome to Neighbourhood, perfectly situated to enjoy the vibrant shopping, dining, and entertainment scene that Bolton has to offer.

With a range of shops, bars, eateries, and entertainment venues just a stone's throw away, you'll have countless opportunities to start your day with a delightful breakfast, enjoy a leisurely brunch, or treat yourself to a memorable afternoon.

For families, there's an abundance of exciting activities right at your doorstep, ensuring that the little ones are always entertained and having fun.

As Bolton undergoes an exciting period of transformation, through its ongoing regeneration project, there has never been a better time to become part of this community.



Retail Park

Bolton Town Hall

Elizabeth Gardens

Bolton Market

University of Bolton

Albert Halls

Le Mans Crescent

Cheadle Gardens

LOCATION
LOCATION
LOCATION

NEIGHBOUR-
HOOD.



HIGHLY SUSTAINABLE THREE BEDROOM TOWNHOUSES

NEIGHBOUR-
HOOD.

CONNECTIVITY



Walk

2 minute walk to Bolton Indoor Market
and an array of amenities including;
Restaurants, Bars and Shops



Drive

Easy access to both M6
and M62 motorways



Bus

Numerous bus routes connect the
scheme to the rest of Bolton and the
North West



Train

7 minute walk to Bolton Train
Station with 16 minute services to
Manchester City Centre, and direct
services to The Lake District



Leisure and retail

Bolton Indoor Market
Market Place Shopping Centre
Albert Halls



Fly

Direct transport links to Manchester
Airport, the largest regional airport
in the UK



MARKET

NEIGHBOUR-
HOOD.

Residents at Neighbourhood, Moor Lane will be lucky to count Bolton's Indoor Market as a close neighbour. This famous, multi-award winning market will provide residents with a wealth of culinary delights on your doorstep. Open every Tuesday, Thursday, Friday and Saturday, you can indulge in anything with a variety of butchers, fishmongers and fruit & vegetable stall holders all beautifully presenting their wares.

Expect a warm welcome from a multitude of stall holders, who display all the charming hustle and bustle of British markets in years gone by. You will be spoilt for choice by the traditional food comforts, as well as delicacies from around the world – every cook's dream!



In addition to foods, there is an abundance of retail choices including lifestyle, clothing and homeware offers and much, much more. The market, which is made up of over 300 stalls, has undergone significant improvements, making this jewel in Bolton's crown all the more appealing.

It might just be the perfect neighbour.

GATED PARKING
PRIVATE GARDENS
ROOF TERRACES



LIFESTYLE

NEIGHBOURHOOD.

Within just a few minutes walk of Neighbourhood you will find some fantastic places to check out:

The Vaults

The recently renovated Victorian basement area is home to a variety of bars and restaurants, dating back to the 1800s!

Market Place Shopping Centre

The Lost Valley adventure golf, Clever Cogz Escape Rooms, and The Light – a state-of-the-art nine screen cinema.

Ye Olde Man & Scythe

A pub on Churchgate that dates back as far as the 1200s – one of the 10 oldest pubs in Britain.

Hogarths

An award winning gin bar and micro brewery, a trendy blend between a modern cocktail bar and Victorian style pub.

The Definitely Maybe

A new multi-functional social spot with a theme of the timeless Manchester band, Oasis–food and cocktails and live music too!

Octagon Theatre

Recently renovated, the theatre provides an entertaining variety of performances, from light hearted plays for the kids, and, adult drama, to a monthly comedy club.



EDUCATION

NEIGHBOURHOOD.



University of Bolton

“At the University of Bolton, we take great pride in providing a quality, supportive learning environment for our students.”



The Bolton School

An award winning grammar school ‘Independent School of the Year’ “Bolton School seeks to realise the potential of each pupil. We provide challenge, encourage initiative, promote teamwork and develop leadership capabilities.”



Lever Edge Primary School

“It is our mission to nurture and raise the aspirations, achievements and life chances of all pupils, so that they are able to grow and develop into lifelong learners and achieve their full potential; leading happy, healthy, fulfilled lives, contributing positively to our community.”



The Sixth Form Bolton

“We are the only specialist sixth form in the town. Our state-of-the-art town centre campus provides students with the very best facilities to support their chosen programme of study.”



Eden Boys’ School

“We offer a culture of high expectations, a high powered academic curriculum, an exciting enrichment programme and a strong emphasis on community service. At Eden, every student matters.”



Sunning Hill Primary School

“Our journey together provides our children with opportunities to learn and grow and encourages them to be curious about the world.”

LANDSCAPED PUBLIC REALM



SUSTAINABILITY

NEIGHBOUR-
HOOD.



Sustainable Living

Welcome to Neighbourhood, where sustainable living meets modern comfort. We take pride in offering eco-friendly homes that are carefully designed to minimise environmental impact without compromising on quality, design or functionality.

A Home for a Greener Future

At Neighbourhood, sustainability extends beyond the walls of your home. Our community amenities include well maintained green spaces, and high quality public realm that inspire active and eco-friendly lifestyles. We prioritise connectivity by offering easy access to local public transportation, and there is access to communal vehicle charging facilities to facilitate sustainable commuting.

Neighbourhood is a sustainable housing development that brings low energy, sustainable housing to the heart of Bolton. At Step Places, we embrace innovative technologies and carefully considered design elements to create an environmentally conscious community. Our homes feature high performance double glazed windows, allowing natural light to flood in while keeping the interior temperature regulated for optimal energy efficiency. Our houses will feature Air Source Heat Pumps, Whole House Ventilation Systems, Electric Vehicle Charging Points and Secure Gated Parking, as standard. The development also showcases a thoughtfully landscaped public realm that provides residents with beautiful green spaces to enjoy, with new seating. We have paid close attention to the biodiversity impact of our development, ensuring a net gain in that respect. Beyond the extensive planting, we have incorporated bee bricks, to provide safe habitats for these vital pollinators, and bat boxes, to protect local wildlife.

Nestled amongst captivating new landscaping and alongside neighbours like Le Mans Crescent and Bolton's Indoor Market, this development sets a new standard for town centre living in Bolton. There are two types of Neighbourhood homes to choose from.

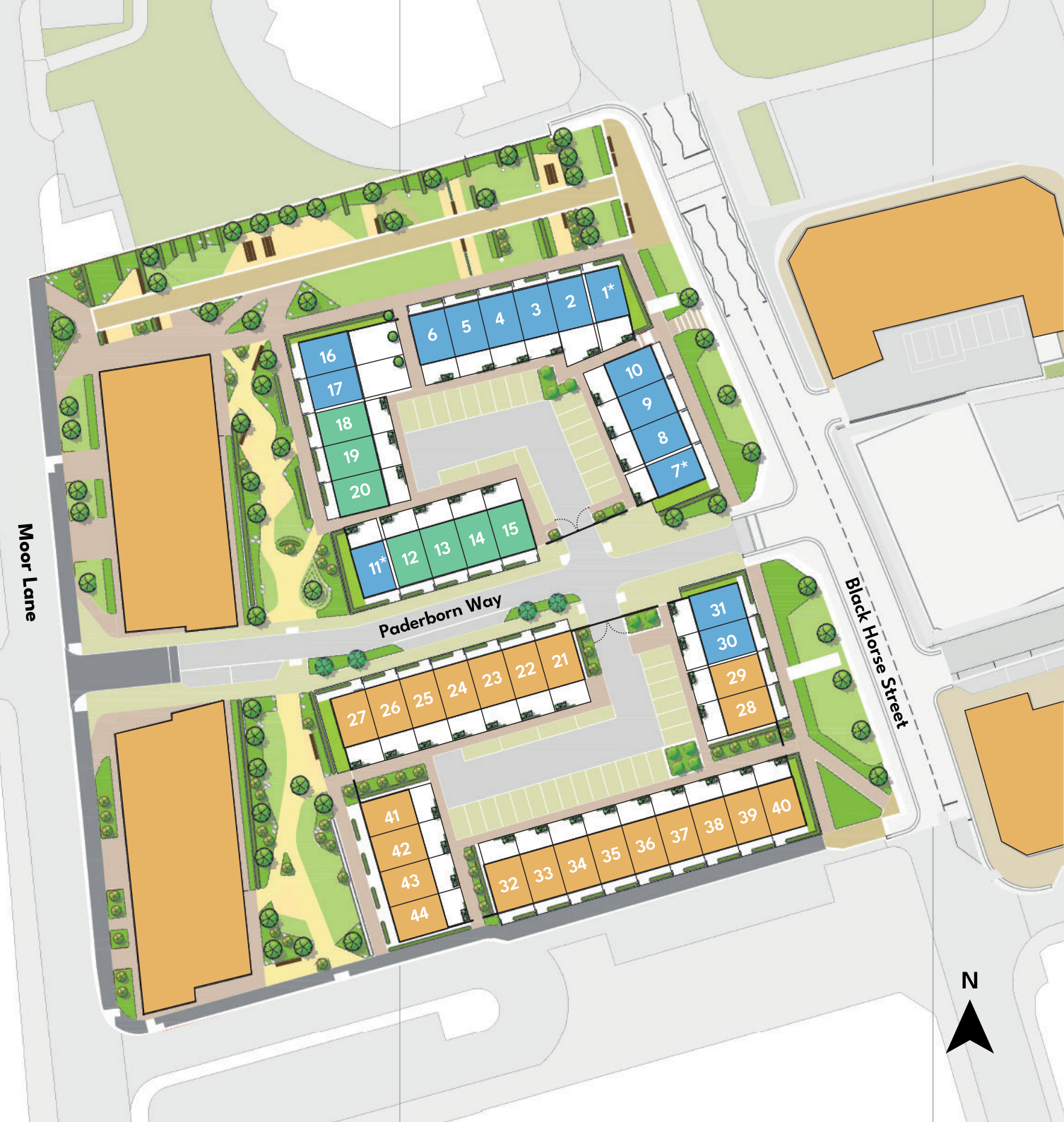
Key:

Type A - Rear Terrace

Type B - Front Terrace

Not Available

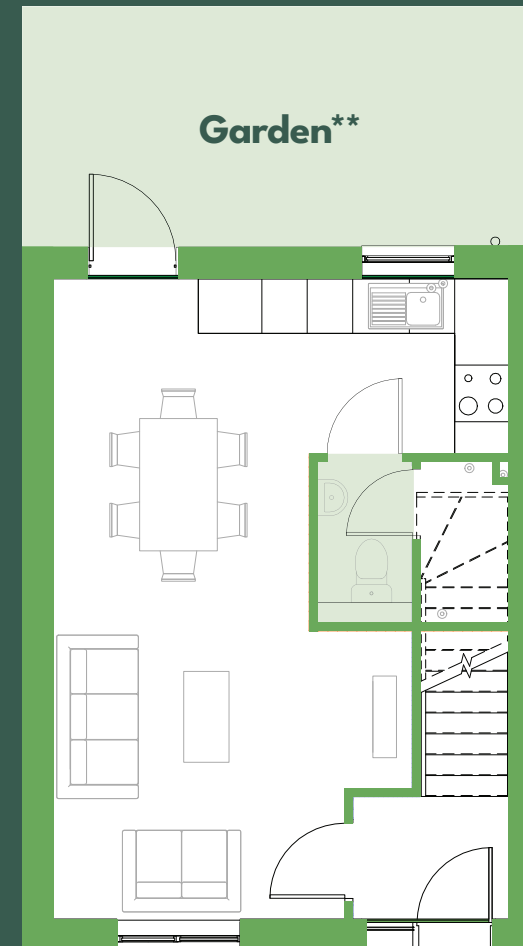
*2nd floor window arrangements may vary. Please speak to a sales representative for more information.



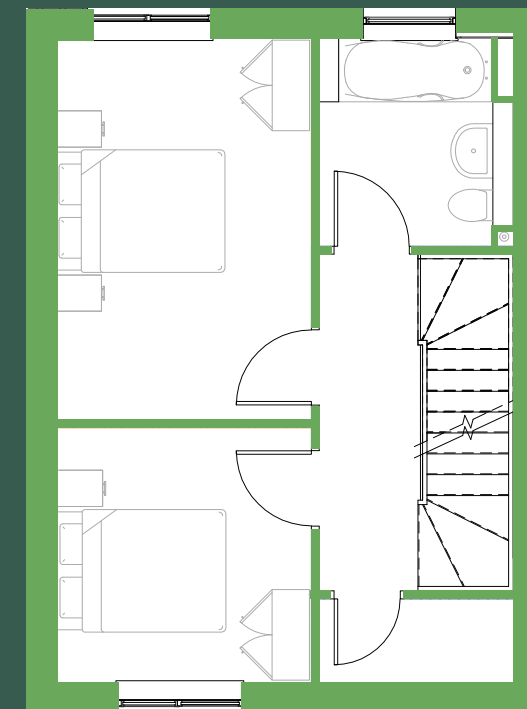
TYPE A

Kitchen: 5.15m x 1.97m
Dining / Lounge: 5.16m x 4.04m
Bedroom 1: 4.17m x 2.91m
Bedroom 2: 2.90m x 2.92m

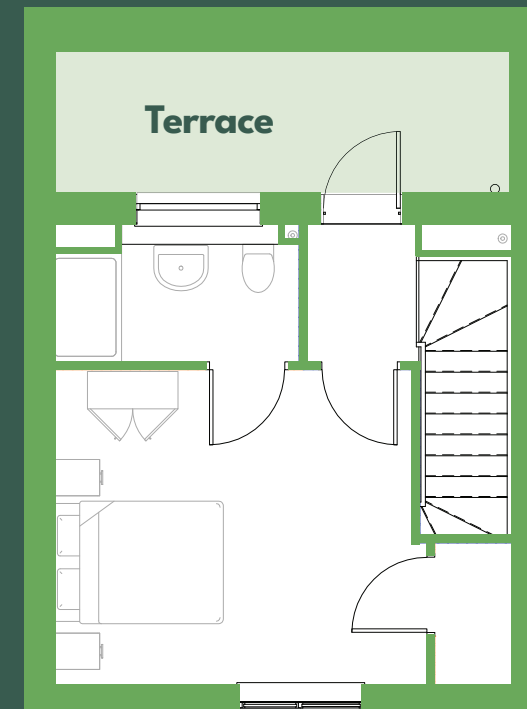
Bathroom: 2.32m x 2.17m
Master Bedroom: 3.51m x 4.19m
Ensuite: 1.54m x 2.78m
Terrace: 1.33m x 5m



Ground floor



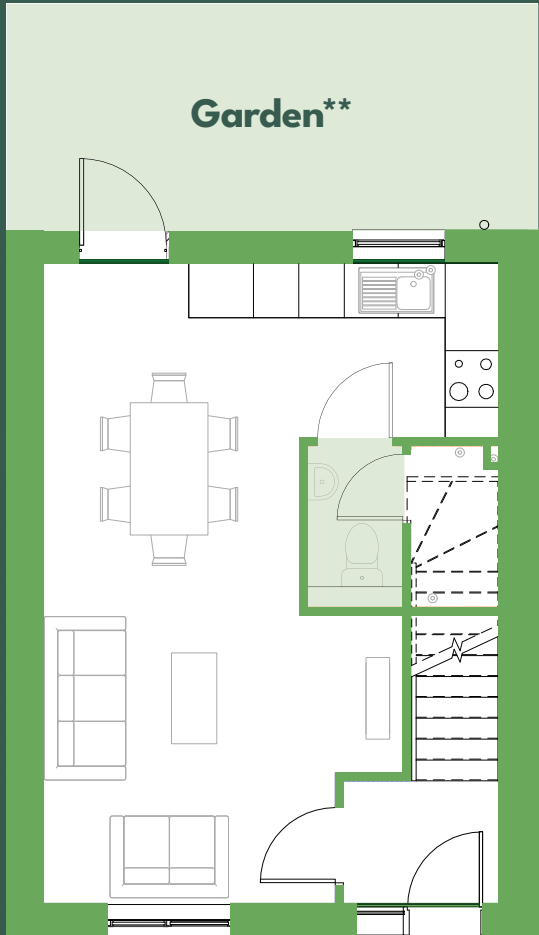
First floor



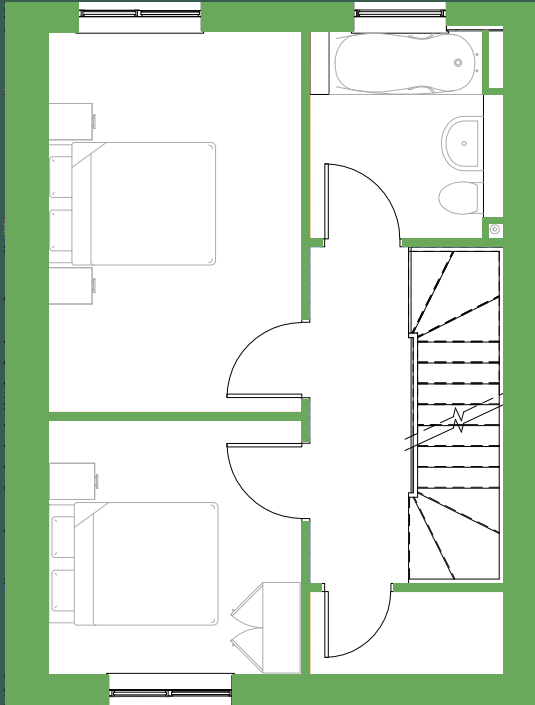
Second floor*

*2nd floor window arrangements may vary. Please speak to a sales representative for more information.
**Garden sizes may vary

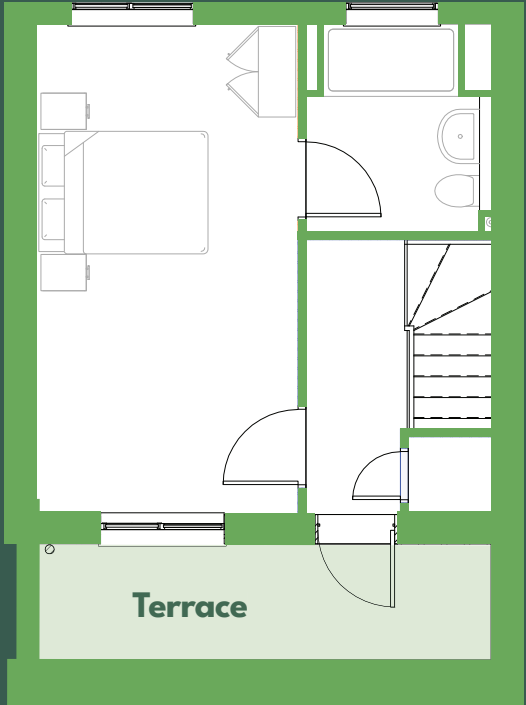
TYPE B



Ground floor



First floor



Second floor

Kitchen: 5.15m x 1.97m

Dining / Lounge: 5.16m x 4.04m

Bedroom 1: 4.17m x 2.96m

Bedroom 2: 2.90m x 2.92m

Bathroom: 2.32m x 2.17m

Master Bedroom: 5.51m x 2.97m

Ensuite: 2.32m x 2.78m

Terrace: 1.65m X 5m

**Garden sizes may vary



General

- High performance double glazed windows
- Air Source Heat Pumps
- Whole House MVHR systems
- Brushed steel ironmongery to doors and windows
- High speed broadband enabled
- Zonal heating system

External

- Private gardens & roof terraces
- Landscaped public realm
- Gated parking
- Electric vehicle charging points
- Designer external lighting
- External electrical sockets

Kitchen

- High quality cabinetry
- Choice of colours and styles
- Integrated oven, hob and extractor fan
- Integrated fridge freezer

Bathroom

- Choice of tiling to bath and shower areas
- Thermostatic bar shower with rain head
- Chrome heated towel rail
- Vitra sanitaryware

Safety & Security

- Mains powered smoke detectors
- 2 year builder's warranty
- 10 year new homes warranty with ICW

A NEW COMMUNITY IN THE HEART OF BOLTON

ABOUT US

Step Places have been creating places people love since 2008. Our approach will always have community at its core, with social impact and engagement very much part of our process. We are proud of the communities we enhance and the homes we create, and we look forward to creating many more in the future.

Our work has been recognised in various regional and national awards, commending everything from our company ethos and sustainability to the quality of homes we deliver.

www.step-places.com

NEIGHBOUR- HOOD.

A BRAND OF HOMES BY
stepplaces



Bank House, Withington



Chorlton Villas, Chorlton



Cotton Square, Ancoats



Home Louisa, Openshaw



Waterside Gardens, Wigan



The Edinburgh Castle Pub, Ancoats

NEIGHBOUR- HOOD.

stepplaces

Unit 4, Royal Mills,
17 Redhill Street
Ancoats, Manchester
M4 5BA

