





Wyles Way, Stamford Bridge, York, YO41 1SB

£270,000

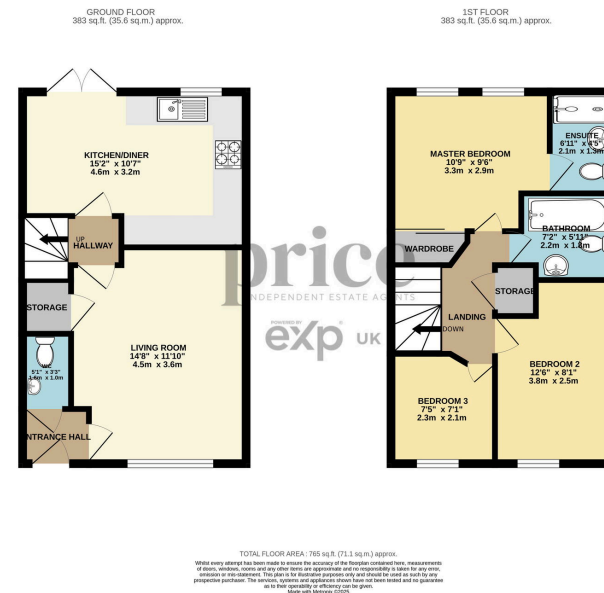
3 2 1



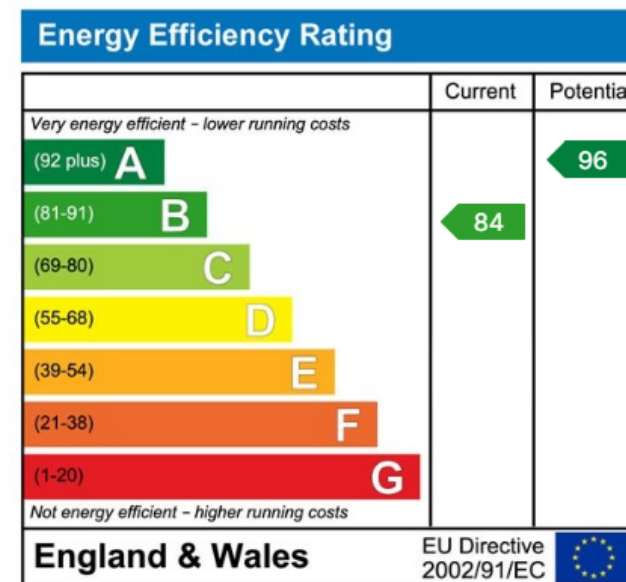


- Three Bedroom Semi Detached Home
- Stylish Dining Kitchen
- Master Bedroom with En-Suite
- Stamford Bridge Village Location
- Enclosed Garden with Lawn & Extended Patio Area
- Recently Installed Log Burner
- Bespoke Window Shutters
- Off Road Parking Spaces for Two Cars
- Perfect for First Time Buyers or Downsizers
- Popular David Wilson Estate





Situated within the popular Saxon Gate development, this modern family home is ideal for first-time buyers or young families looking for a stylish yet practical living space. With three well-proportioned bedrooms, beautiful window shutters, log burner an open-plan kitchen diner, plus good size rear garden, this property offers both comfort and convenience in a desirable location.



01904 373 131 | [www.priceestateagents.com](http://www.priceestateagents.com) | [sales@priceestateagents.com](mailto:sales@priceestateagents.com)

