



Apartment 14, The Archway, Little Hallfield Road,
£220,000

🛏️ 2 🪑 2 🛋️ 1

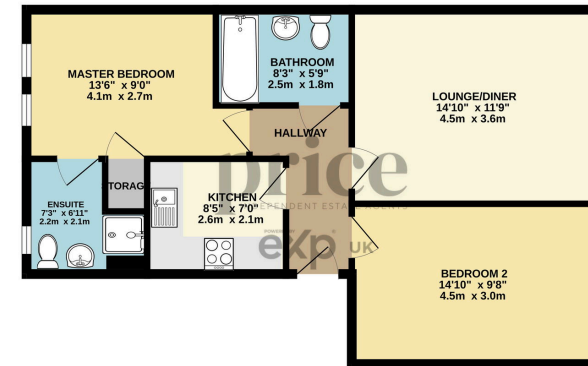


- No Onward Chain
- Two Spacious Double Bedrooms
- Electric Underfloor Heating
- Move In Ready
- Walking Distance Into York City Centre
- Second Floor Apartment
- Master Bedroom with En-Suite Shower Room
- Allocated Parking Space & Visitor Parking
- Perfect First Time Buyer Home or Investment
- Close to Shops, Gym & Local Amenities



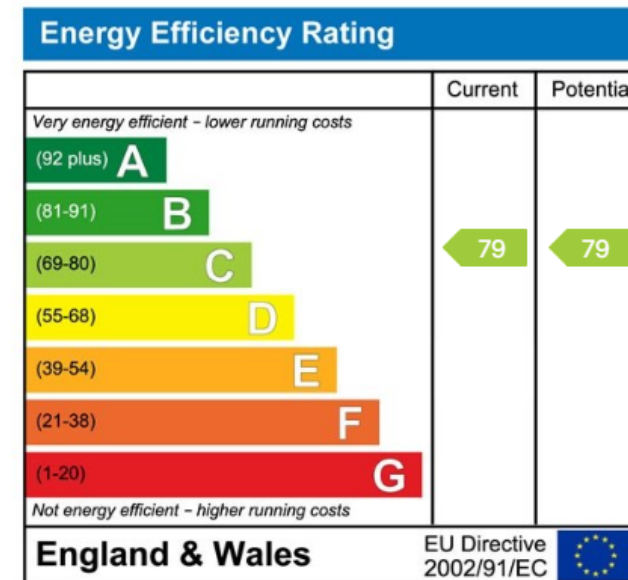


GROUND FLOOR
630 sq.ft. (58.5 sq.m.) approx.



TOTAL FLOOR AREA: 630 sq.ft. (58.5 sq.m.) approx.
While every effort has been made to ensure the accuracy of the figures contained here, measurements of plots, volumes, costs and any other items are approximate and no responsibility is taken for any error, omission or misstatement. This plan is for illustrative purposes only and should be used as a guide by any prospective purchaser. The accuracy, reliability and quality of the information is not guaranteed. Make well informed choice.

This modern, move-in-ready second floor apartment will appeal to first-time buyers, professional couples, and investors looking for a solid, low-maintenance home near the heart of York. Its bright interiors, updated finishes, and allocated parking space make it a smart, stylish choice.



01904 373 131 | www.priceestateagents.com | sales@priceestateagents.com

