



HOLLY PRICE POWERED BY **exp** TM UK

@ holly.price@exp.uk.com

🌐 hollyprice.exp.uk.com

☎ 01904 373131

4 Cornfield View, Wilberfoss

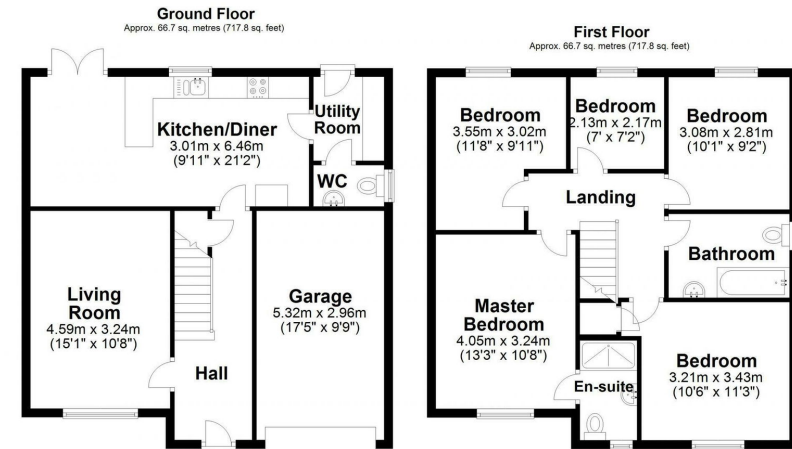
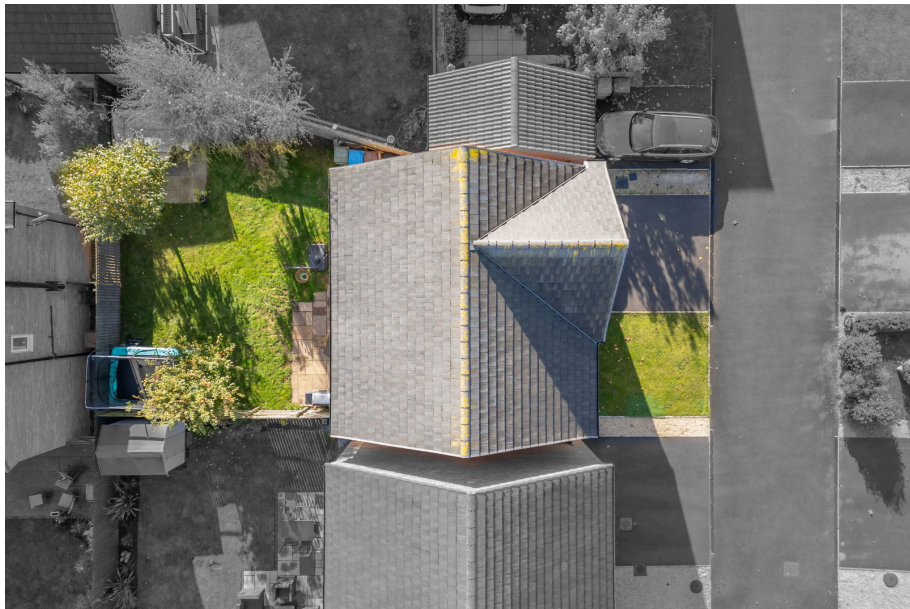
£425,000

🛏 5 🚿 2 🛋 1



- No Onward Chain
- Integral Single Garage & Driveway Parking
- Sunny Rear Garden
- Open Plan Kitchen/Diner
- 999 Lease Starting 1st January 2016
- 5 Bedroom Detached Home
- Quiet Cul-De-Sac in Modern Development
- Field Views to Rear
- En-Suite Shower Room, Downstairs W/C & Family Bathroom
- Separate Utility Room





Total area: approx. 133.4 sq. metres (1435.6 sq. feet)

The total SqFt shown can include Garages & Outbuildings.
Plan produced using PlanUp.

4 Cornfield

Situated in a peaceful cul-de-sac with open fields to one side, this attractive five-bedroom detached family home offers the perfect blend of village living and easy access to both the City of York and the market town of Pocklington. With no onward chain, this property is ready for you to move straight in, making it an ideal choice for families looking to upsize. Welcome to Cornfield View.

Score	Energy rating	Current	Potential
92+	A		94 A
81-91	B	85 B	
69-80	C		
55-68	D		
39-54	E		
21-38	F		
1-20	G		