



HOLLY PRICE POWERED BY **exp** TM UK

@ holly.price@exp.uk.com

🌐 hollyprice.exp.uk.com

☎ 01904 373131

Valley View, Wheldrake, York, YO19 6AJ

Offers Over £375,000

🛏️ 2 🚿 2 🚪 1

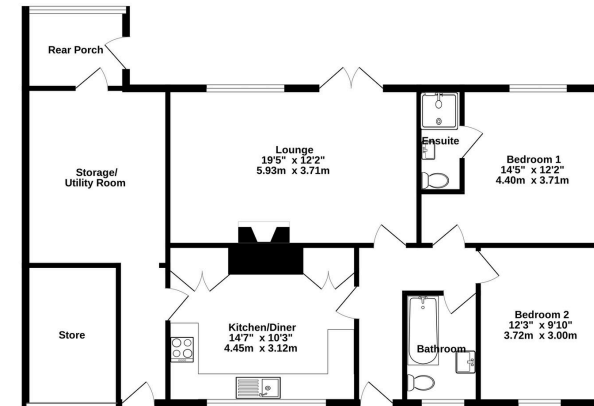


- 2 Bedroom Detached Bungalow
- Beautiful Kitchen Diner
- Two Double Bedrooms
- Garage & Driveway Parking
- Popular Wheldrake Location
- Move Straight In Condition
- Views Over Fields
- Family Bathroom & En-Suite
- Large Utility/Storage with Potential





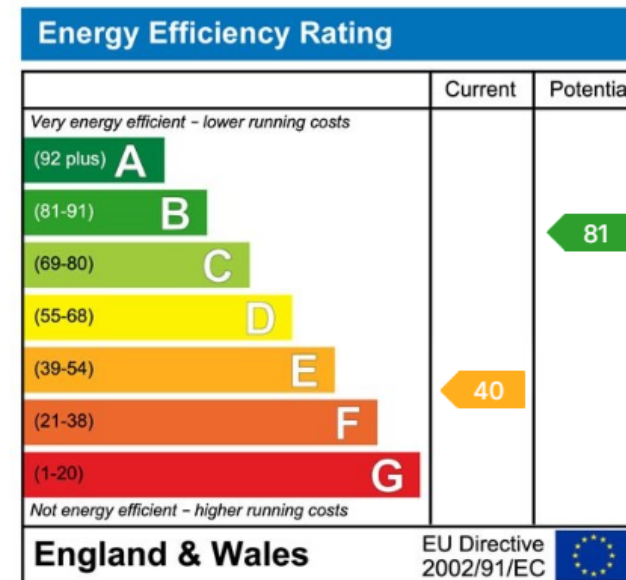
GROUND FLOOR
1123 sq.ft. (104.3 sq.m.) approx.



TOTAL FLOOR AREA: 1123 sq.ft. (104.3 sq.m.) approx.
While every attempt has been made to ensure the accuracy of the floorplan, the measurements of doors, windows, stairs and any other items are approximate and no responsibility is taken for any error, omission or misrepresentation. This plan is for the buyer's reference only and should not be used as a basis for any prospective purchase. The correct, accurate and detailed floor plan has been issued and no guarantee is given for this opportunity or efficiency can be given.
 Made with Blueprints (2022)



Nestled in a sought-after Wheldrake location, this immaculately maintained 2-bedroom detached bungalow offers the perfect blend of modern comfort and tranquil countryside living. Being "move in ready" condition and boasting stunning uninterrupted views to the rear, this property is ideal for those seeking convenience without compromising on peace and privacy. Welcome to Valley View.



eXp World UK Ltd is a registered company at Level 37, 25 Canada Square, London, E14 5LQ.

Registered company number is 12016573. VAT Registration Number is 327 4120 29