



HOLLY PRICE POWERED BY **exp** <sup>TM</sup> UK

@ holly.price@exp.uk.com

hollyprice.exp.uk.com

01904 373131

# 1 Ebor Court, Newton Kyme

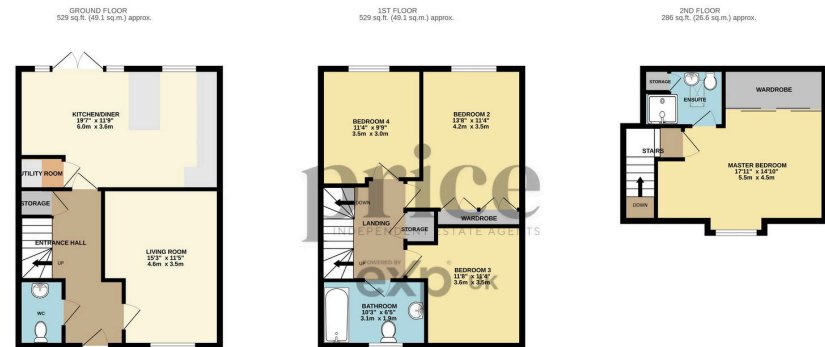
Offers Over £400,000

🛏️ 4 🚿 2 🛋️ 2



- Semi Detached Three Storey Home
- Beautifully Presented Throughout
- Detached Single Garage & Driveway Parking
- Modern Open Plan Kitchen/ Diner
- Downstairs W/C + Handy Utility
- Four Double Bedrooms
- Master Bedroom with En-Suite
- Great Position in the Development
- Private Enclosed Rear Garden





TOTAL FLOOR AREA - 1343 sq. ft. (124.8 sq.m.) approx.  
 Whilst every attempt has been made to ensure the accuracy of the floorplan contained here, measurements of doors, windows, rooms and any other items are approximate and no responsibility is taken for any error, omission or mis-statement. This plan is for illustrative purposes only and should be used as such by any prospective purchaser. The services, systems and appliances shown have not been tested and no guarantee as to their operability or efficiency can be given.  
 Made with Metropex i2021

Tucked away in this modern development is an impressive four-bedroom semi-detached family home, set on a desirable end plot within a sought-after area of the village. This modern property offers bright and spacious accommodation arranged over three floors and is in move in condition. Welcome to Ebor Court.

Score	Energy rating	Current	Potential
92+	A		94 A
81-91	B	85 B	
69-80	C		
55-68	D		
39-54	E		
21-38	F		
1-20	G		

eXp World UK Ltd is a registered company at Level 37, 25 Canada Square, London, E14 5LQ.

Registered company number is 12016573. VAT Registration Number is 327 4120 29