



HOLLY PRICE POWERED BY **exp**TM UK

@ holly.price@exp.uk.com

🌐 hollyprice.exp.uk.com

☎ 01904 373131

11, Weald House Birch Close, Huntington

Offers Over £180,000

🛏️ 2 🚿 1 🚻 1

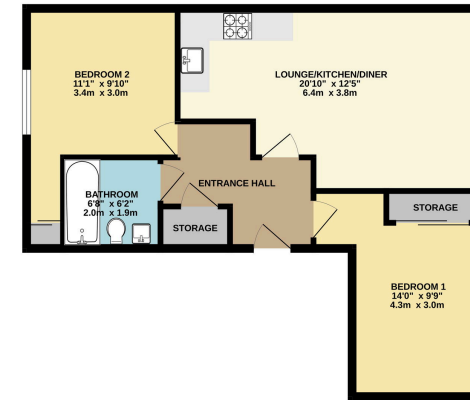


- No Chain
- Two Double Bedrooms with Wardrobe Space
- Allocated Parking
- Open Plan Living/Kitchen/ Dining
- Perfect for First Time Buyers or Investors
- Lovely 2nd Floor Apartment
- Popular Birch Park, Huntington Location
- Communal Gardens, Bin & Bike Store
- Great Hallway Space





GROUND FLOOR
598 sq.ft. (55.6 sq.m.) approx.



TOTAL FLOOR AREA: 598 sq ft (55.6 sq m) approx.
While every effort has been made to ensure the accuracy of the floor plan, measurements of floors, walls, windows, etc. may differ from actual dimensions and are not intended to be used for legal purposes. The seller is not responsible for any errors or omissions in this floor plan.

Located on the edge of the highly sought-after Huntington area, this superb two double bedroom apartment is offered for sale with no onward chain. With allocated parking and fantastic links into the city and beyond, it's perfect for both first time buyers and investors alike. Welcome to Weald House.

Score	Energy rating	Current	Potential
92+	A		
81-91	B		84 B
69-80	C	72 C	
55-68	D		
39-54	E		
21-38	F		
1-20	G		