



HOLLY PRICE POWERED BY **exp** TM UK

@ holly.price@exp.uk.com

🌐 hollyprice.exp.uk.com

☎ 01904 373131

8 Long Moor Chase, Stamford Bridge

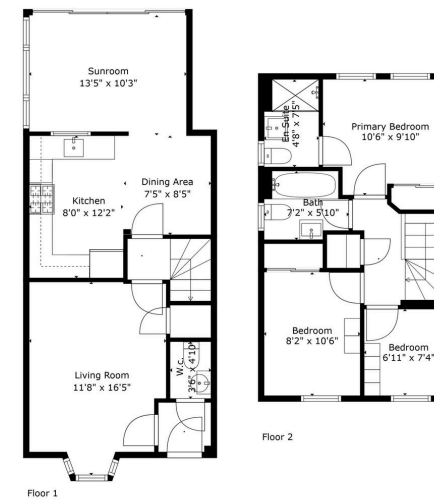
Offers Over £280,000

3 2 1



- 3 Bedroom Semi Detached
- Recently Extended with Bifold Doors Leading Outside
- Beautifully Presented Throughout
- Larger Than Most Rear Garden & Patio
- Open Plan Kitchen/Diner
- Downstairs W/C, Family Bathroom & En-Suite
- Parking for Two Cars
- Popular David Wilson Estate in Stamford Bridge





TOTAL: 981 sq. ft.
 FLOOR 1: 563 sq. ft. FLOOR 2: 418 sq. ft.
 Floor Plan Created By Callknox App. Measurements Deemed Highly Reliable But Not Guaranteed.



Located on the popular Saxon Gate estate in Stamford Bridge, you will find this stunning 3 bedroom semi detached home. With a recently extension adding a further playroom/summer room with bi-fold doors, lovely open plan kitchen dining and separate lounge, sleek designed bathrooms, this home is ideal for modern family living. Welcome to Long Moor Chase.

Score	Energy rating	Current	Potential
92+	A		96 A
81-91	B	84 B	
69-80	C		
55-68	D		
39-54	E		
21-38	F		
1-20	G		