



HOLLY PRICE POWERED BY **exp** TM UK

@ holly.price@exp.uk.com

🌐 hollyprice.exp.uk.com

☎ 01904 373131

61 Danebury Drive

£270,000

🛏️ 2 🚿 1 🚗 0

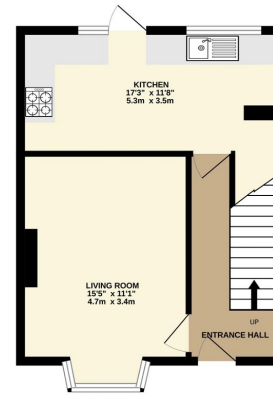


- Two Bedroom Semi Detached Home
- Front & Rear Gardens
- Potential To Extend* STPP
- No Onward Chain
- Great Location Close to Acomb Shops
- Ready To Put Your Stamp On
- Kitchen/Dining Room Overlooking Garden

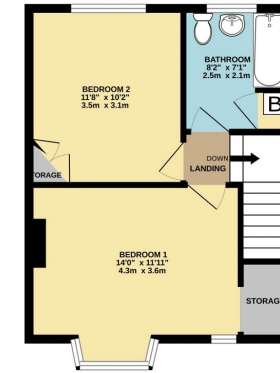




GROUND FLOOR
379 sq.ft. (35.2 sq.m.) approx.



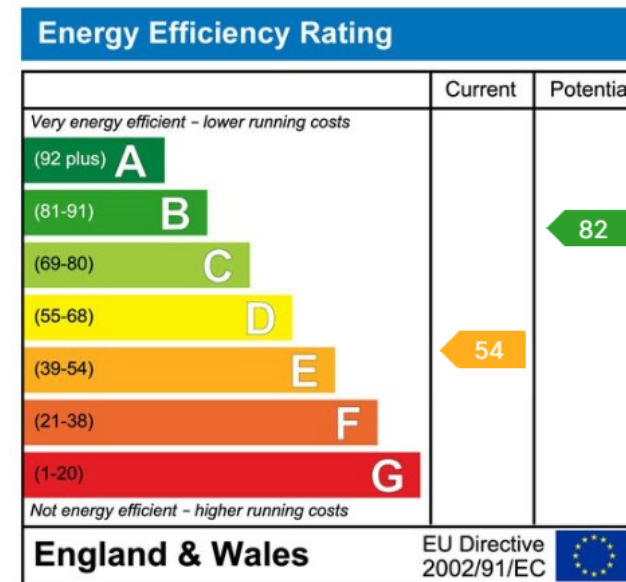
1ST FLOOR
382 sq.ft. (35.5 sq.m.) approx.



TOTAL FLOOR AREA: 761 sq.ft. (70.7 sq.m.) approx.

While every attempt has been made to ensure the accuracy of the floorplan contained herein, measurements of plots, sections, heights and any other items are approximate and the responsibility is taken for any error, omission or mis-statement. This plan is for illustrative purposes only and should be used as such by any prospective purchaser. The services, systems and appliances shown have not been tested and no guarantee as to their operability or efficiency can be given. Made with Metrege 02024

Welcome to Danebury Drive, a 1940s semi-detached home in a great location to the West of York. This delightful property boasts two generously sized double bedrooms, a spacious living room, and kitchen diner, making it an ideal choice for first-time buyers, small families, or those seeking to put their own stamp on a property.



eXp World UK Ltd is a registered company at Level 37, 25 Canada Square, London, E14 5LQ.

Registered company number is 12016573. VAT Registration Number is 327 4120 29