



HOLLY PRICE POWERED BY **exp** <sup>TM</sup> UK

@ holly.price@exp.uk.com

hollyprice.exp.uk.com

01904 373131

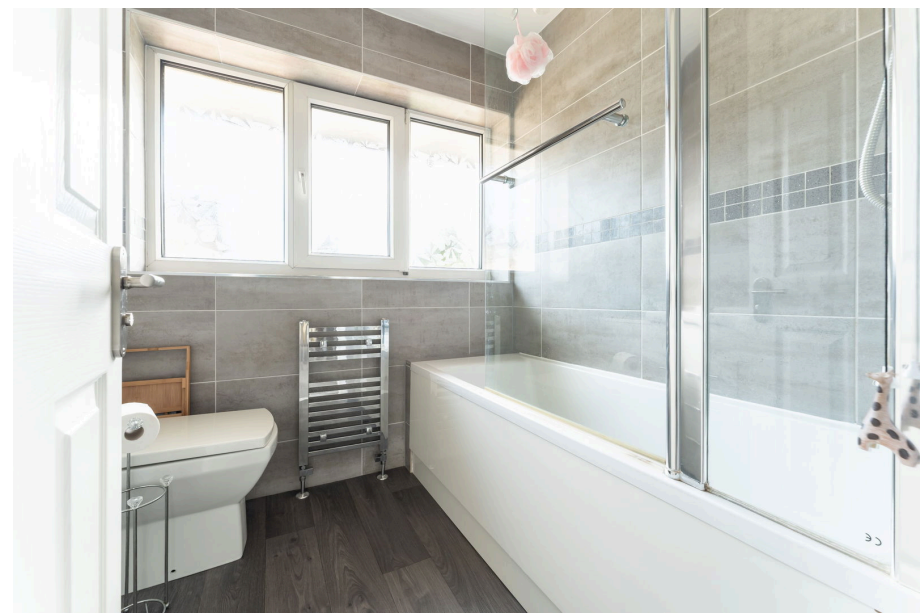
# Millers Croft, Copmanthorpe, YO23 3TW

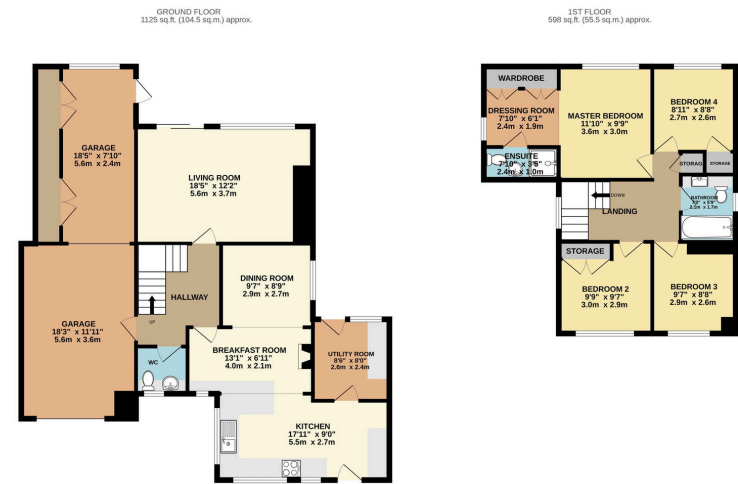
Offers Over £650,000

🛏️ 4 🚿 2 🚗 2



- Please quote HP0386 when requesting further information or to arrange a viewing
- South Facing Rear Garden & Patio
- Open Plan Kitchen/ Breakfast/Diner
- Set Back Position in the Cul-De-Sac
- Off Street Driveway Parking
- Large 4 Bedroom Detached Home
- Family Bathroom, Downstairs W/C and En-Suite
- Master Bedroom with Dressing Room & En-Suite
- Large Extended Garage
- Popular Copmanthorpe Village Location





TOTAL FLOOR AREA: 1723 sq ft. (160.1 sq m.) approx.  
While every effort has been made to ensure the accuracy of the floorplan contained herein, measurements of doors, windows, floors and any other items are approximate and the responsibility is taken for any error, omission or mis-statement. This plan is for illustrative purposes only and should be used as such by any prospective purchaser. The services, systems and appliances shown have not been tested and no guarantee as to their operability or efficiency can be given.  
 Made with Metrepro ©2014

Nestled in the highly sought-after village of Copmanthorpe, this impressive four-bedroom detached home offers a fantastic blend of space, comfort, and style. The property is perfectly positioned, in a set back position within the street, and adjacent to an open grass area, providing both privacy and a pleasant outlook. This home offers open plan kitchen/dining spaces and is one not to miss. Welcome to Millers Croft.

