

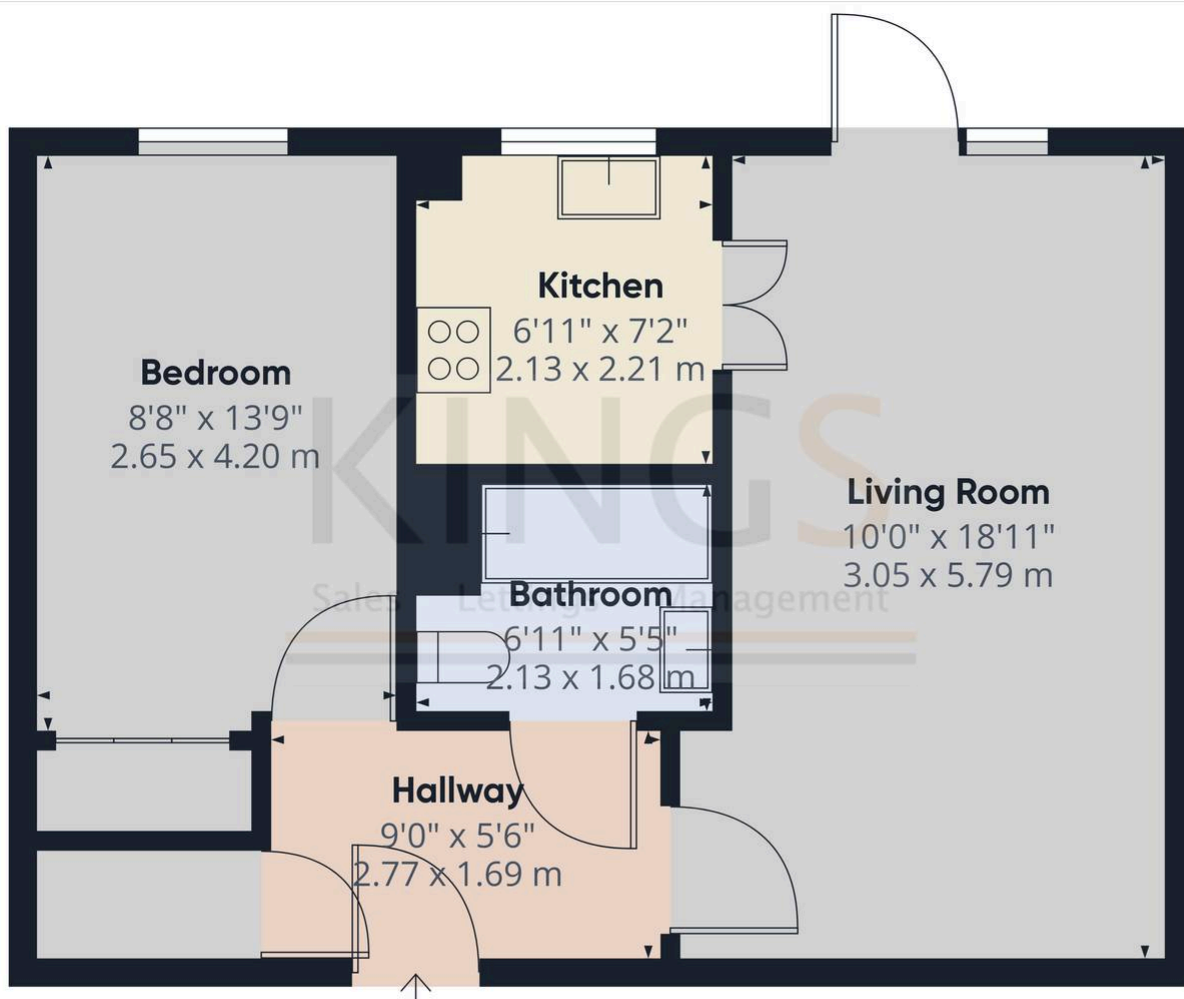


Lewington Court, 591 Hertford Road

£100,000 Leasehold

FIRST FLOOR APARTMENT • ONE DOUBLE BEDROOM • PRIVATE BALCONY • LIFT SERVICED BLOCK • OVER 60'S DEVELOPMENT • COMMUNAL FACILITIES • CLOSE TO SHOPS AND AMENITIES • LEASEHOLD • EPC RATING - TBC

KINGS
SALES LETTINGS MANAGEMENT



Approximate total area¹⁾
492.55 ft²
45.76 m²

Excluding balconies and terraces

While every attempt has been made to ensure accuracy, all measurements are approximate, not to scale. This floor plan is for illustrative purposes only.

GIRAFFE360

