



CALDECOTT

PROPERTY SALES & LETTINGS

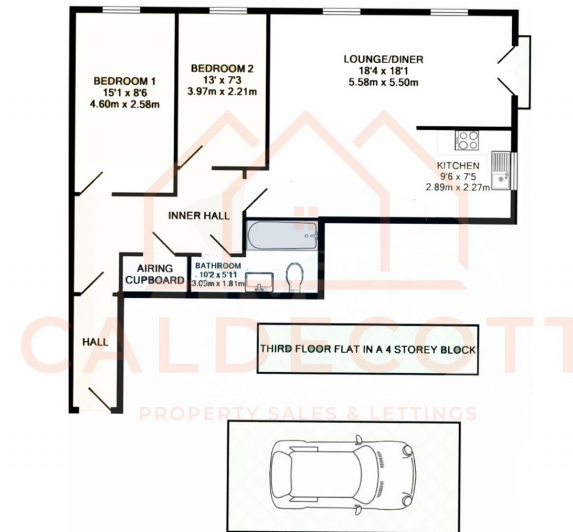
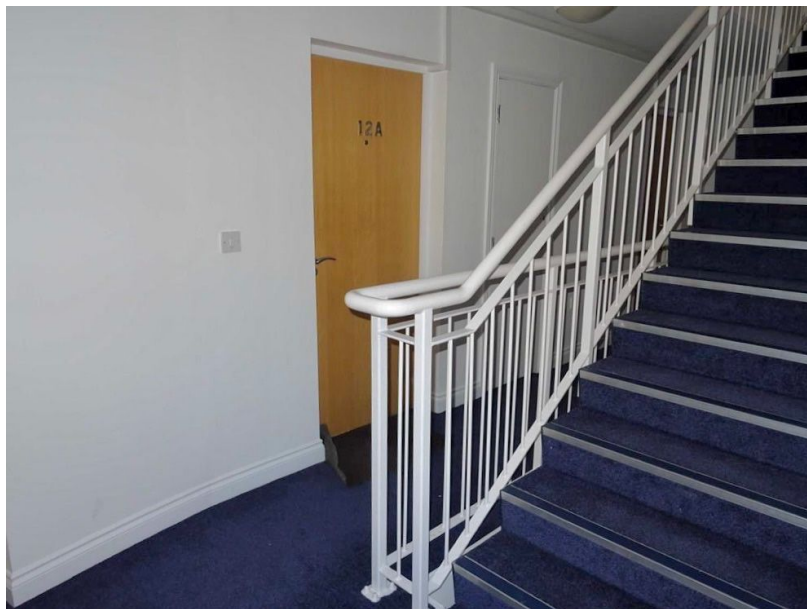
Weavers Court, Trinity Lane

£130,000

🛏️ 2 🚿 1 🚗 1

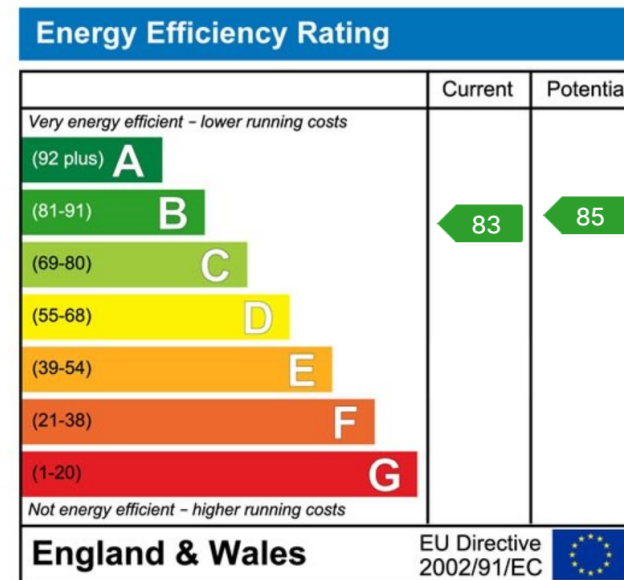






12A WEAVERS COURT TRINITY LANE HINCKLEY LE10 0BT REF: CG03112017115000VP
 TOTAL APPROX. FLOOR AREA 780 SQ.FT. (72.5 SQ.M.)
 Made with Metropia ©2018

Caldecott Property are delighted to offer this two-bedroom second floor flat, available with no onward chain. Extending to approx. 707 sq ft (65.7 m²) and set within a four-storey block, the property benefits from sealed double glazing, night storage heating and allocated parking. Accommodation includes a reception hall, inner hallway with airing cupboard, two front-facing bedrooms with electric heaters, and a modern bathroom with bath, shower, vanity unit and WC. The spacious L-shaped lounge/dining room features recessed lighting, French doors to a Juliette balcony, additional windows and twin night storage heaters. A fitted kitchen completes the accommodation, offering a stainless steel sink, a good range of wall and base units, work surfaces, tiling, plumbing for washing machine and a double glazed window.



Phone Number:

01788 221994

Email:

Hello@caldecottproperty.co.uk

Website:

www.caldecottproperty.co.uk