

LOWRY
ONE
BEDROOM
HOME

BLOOR HOMES



A one bedroom detached home with a fantastic open plan kitchen / dining / living area and a spacious bedroom.

LOWRY

A STYLISH ONE BEDROOM
DETACHED HOME

**LOWRY
ONE
BEDROOM
HOME**

FIRST FLOOR:

BEDROOM 1
3.11m x 4.71m
10'3" x 15'5"

BATHROOM

KITCHEN / LOUNGE
3.36m x 5.75m
11'0" x 18'10"

CLOAKS



**FIRST
FLOOR**

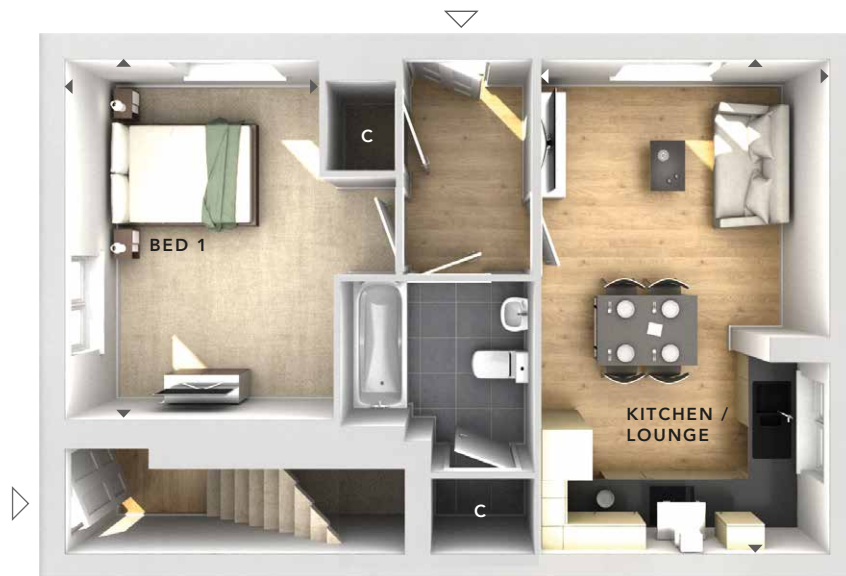
GROUND FLOOR:

BEDROOM 1
2.96m x 4.21m
9'8" x 13'10"

BATHROOM

KITCHEN / LOUNGE
3.36m x 5.75m
11'0" x 18'10"

CLOAKS



**GROUND
FLOOR**

C	- Storage
△	- External Access
◄►	- Measurement Points
© Bloor Homes • CL B10003 6.4	



These particulars are intended as a preliminary guide for prospective purchasers and should not be relied upon. The elevational treatment for individual house types shows a typical arrangement. Details of materials and design treatments may vary. Any artist impressions shown are not intended to represent any particular plot. Purchasers are advised to inspect the layout plan to establish the arrangement of the house and surrounding property. Internal layouts show a general arrangement which may vary from plot to plot. Room sizes given are approx. overall finished room sizes and subject to normal building tolerances (ie ± 75mm). In all instances purchasers are advised to inspect plot specific information available from our sales team. Nothing in these particulars or verbal assurance shall form or constitute part of any contract, and are given without any responsibility on behalf of Bloor Homes.