

Paul Mason Associates



Sunmead, Latchingdon, Chelmsford, CM3 6FN

£460,000



- New Exclusive Development in Latchingdon
- Close to Countryside
- Detached Bungalow with Field Views
- Open Plan Kitchen/Dining Room and Living Room
- Family Bathroom
- Three Good Sized Bedrooms
- Secluded Rear Garden
- Allocated Parking with Electric Charging Point
- Excellent Transport Links Nearby
- EPC - TBC

Energy Efficiency Rating		Current	Potential
Very energy efficient - lower running costs			
(92 plus) A			
(81-91) B			
(69-80) C			
(55-68) D			
(39-54) E			
(21-38) F			
(1-20) G			
Not energy efficient - higher running costs			
England & Wales		EU Directive 2002/91/EC	

Environmental Impact (CO <sub>2</sub> ) Rating		Current	Potential
Very environmentally friendly - lower CO <sub>2</sub> emissions			
(92 plus) A			
(81-91) B			
(69-80) C			
(55-68) D			
(39-54) E			
(21-38) F			
(1-20) G			
Not environmentally friendly - higher CO <sub>2</sub> emissions			
England & Wales		EU Directive 2002/91/EC	

**\*\*MORE IMAGES COMING SOON\*\***.....Introducing Sunmead, an exclusive collection of just 25 beautifully crafted new homes, perfectly positioned just off Burnham Road in the charming village of Latchingdon, Chelmsford. Nestled close to the breathtaking Essex countryside, this thoughtfully designed development blends modern living with the area's traditional architectural style.

Sunmead offers a range of high-quality homes, including 3 and 4 bedroom houses, as well a 3 bedroom bungalow – all built to exceptional standards with flooring fitted throughout. Each property benefits from its own private garden, dedicated parking, and an EVC.

Whether you're looking for a peaceful countryside retreat or a stylish family home, Sunmead delivers comfort, style, and convenience in an idyllic setting.

VIEWINGS ARE BY APPOINTMENT ONLY – contact us today to book your viewing!



\*Mirrored version of plan shown

### Location...

The village is located in the Dengie Peninsular with the closest towns, Maldon, Burnham-On-Crouch and South Woodham Ferrers all being within 7 miles away and Chelmsford approximately 14 miles. The village itself homes less than 1200 residents according to the 2021 census and benefits from a number of amenities including a 24 hour petrol garage, shops, post office, public house, primary school, diner and motel, bowls club, playing field and a village hall and church which both hold events.

### Distances

Latchingdon Primary School - 0.5 miles  
Althorne Railway Station - 2.6 miles  
Maldon - 6.6 miles  
Southend (London) Airport - 19.7 miles

(All mileages are approx)

## ACCOMMODATION

### GROUND FLOOR

#### Entrance Hall

#### Kitchen/Living/Dining

6.14m x 7.03m (20'1" x 23'0")

#### Bedroom One

3.76m x 2.97m (12'4" x 9'8")

#### Bedroom Two

3.17m x 3.05m (10'4" x 10'0")

#### Bedroom Three

3.11m x 2.70m (10'2" x 8'10" )

#### Family Bathroom

### EXTERIOR

#### Turfed Rear Garden

#### Parking with EVC

#### Property Services

Gas - N/A

Electric - Mains

Water - Mains

Drainage - Mains

Heating - Air Source Heat Pump

Local Authority - Maldon

#### Viewings

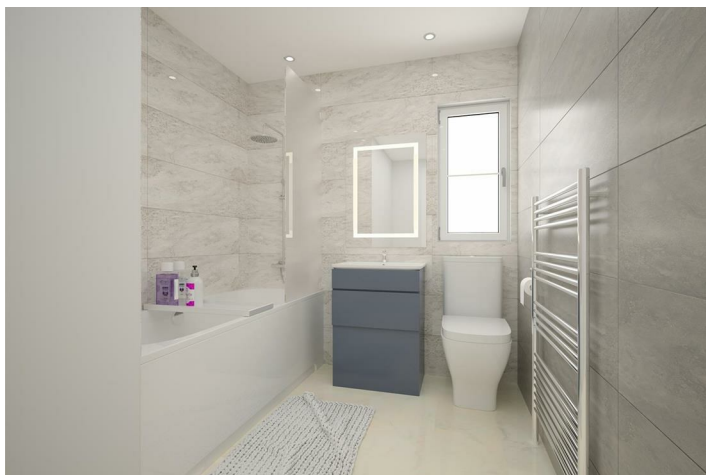
Strictly by appointment only  
through the selling agent Paul  
Mason Associates 01245  
382555.

#### Important Notices

We wish to inform all prospective purchasers that we have prepared these particulars including text, photographs and measurements as a general guide. Room sizes should not be relied upon for carpets and furnishings. We have not

carried out a survey or tested the services, appliances and specific fittings. These particulars do not form part of a contract and must not be relied upon as statement or representation of fact.

Should you be successful in having an offer accepted on a property through ourselves, then there is an administration charge of £25 inc. VAT per person (non-refundable) to complete our Anti Money Laundering Identity checks.



**Paul Mason** Associates

35 The Street  
Latchingdon  
Chelmsford  
Essex  
CM3 6JP  
T: 01621 742 310

Bruce House  
17 The Street  
Hatfield Peverel  
Chelmsford  
CM3 2DP  
T: 01245 382 555

Sales | Lettings | Development | Investment

F: 01245 381257 E: [info@paulmasonassociates.co.uk](mailto:info@paulmasonassociates.co.uk) [www.paulmasonassociates.co.uk](http://www.paulmasonassociates.co.uk)

Paul Mason Associates Limited Registered in England Number - 6767946  
Registered Office - Bruce House, The Street, Hatfield Peverel CM3 2DP







**Paul Mason** Associates

35 The Street  
Latchingdon  
Chelmsford  
Essex  
CM3 6JP  
T: 01621 742 310

Bruce House  
17 The Street  
Hatfield Peverel  
Chelmsford  
CM3 2DP  
T: 01245 382 555

Sales | Lettings | Development | Investment

F: 01245 381257 E: [info@paulmasonassociates.co.uk](mailto:info@paulmasonassociates.co.uk) [www.paulmasonassociates.co.uk](http://www.paulmasonassociates.co.uk)

Paul Mason Associates Limited Registered in England Number - 6767946  
Registered Office - Bruce House, The Street, Hatfield Peverel CM3 2DP

