

Paul Mason Associates

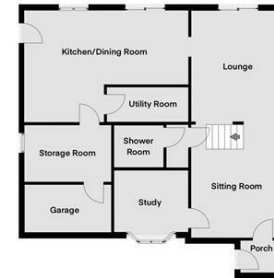


Nipsells Chase, Mayland, Essex, CM3 6EJ

Offers in excess of £550,000

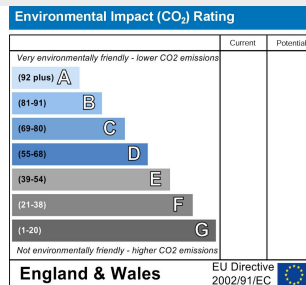
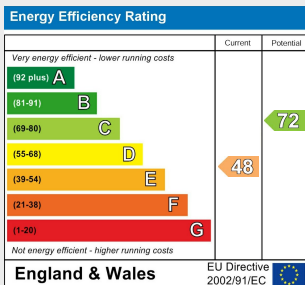
- Detached four bedroom house
- Lounge and sitting room
- Study
- Ground floor shower room
- Kitchen/diner
- Utility room
- Storage/pantry room
- Large rear garden
- No through road
- EPC-

This detached four bedroom property is located in the waterside village of Mayland, with its popular Marina, shops and restaurants and close proximity to pleasant riverside walks. The accommodation includes a master bedroom with an en-suite and three further bedrooms alongside a family bathroom. There is a generous living room, ground floor shower room, study and a large kitchen diner with and separate utility room and a pantry. Externally there is a driveway with parking for numerous vehicles to the front of the property. The property has a large south facing rear garden and a patio area. The property is located only a short distance to the river ideal for boating enthusiasts, as well as local school, shops and doctors. Viewing comes recommended to appreciate the size on offer..



Ground Floor

First Floor



Distances

Maldon Town Centre (8.4 miles)

Mayland Primary School (0.4 miles)

Althorne Railway Station (4.0 miles)

Chelmsford City Centre (15.0 miles)

(All mileages are approximate)

ACCOMMODATION

GROUND FLOOR

Entrance Porch

Door to front and window to side.

Coved ceiling.

Lounge/Sitting Room

9.5m x 3.8m (31'2" x 12'5")

Door to porch. Staircase to first floor. Brick archway. Multi fuel brick fireplace. Door to cloakroom and downstairs shower. Window to side. Sliding patio doors to rear and door to kitchen.

Study

3.3m x 3.1m (10'9" x 10'2")

Window to front.

Coat Room

1.8m x 1m (5'10" x 3'3")

Door to lounge. Door to :-

Ground floor shower room

White three piece suite comprising a corner shower cubicle with mixer taps and shower head over. Low level w.c. Wash hand basin. Heated towel

rail. Inset spotlights. Part tiled walls.

Kitchen/Diner

6.4m x 4.2m (20'11" x 13'9")

Window to rear. Range of matching eye and base level units with laminate work surfaces and matching breakfast bar. One and a half stainless steel inset sink with mixer taps. Tiled splash backs and under lighter. Integrated fridge/freezer. Space for Range master gas cooker and oven with Range master extractor over. Inset spotlights. Stable door to side. Door to :-

Utility Room

3.3m x 1.4 (10'9" x 4'7")

Laminate work surfaces. Inset sink with mixer tap with storage cupboard under. Space for washing machine and tumble dryer and fridge freezer. Door into kitchen.

Pantry/Storage Room

2.9m x 2.3m (9'6" x 7'6")

Window to side. Cupboard housing boiler.

FIRST FLOOR

Landing

Stairs to ground floor. Doors to :-

Bedroom One

4.6m x 4.3m (15'1" x 14'1")

Window to rear. Eves storage. Door to :-

En suite

Three piece suite comprising corner bath with attachments and low level WC. Wash hand basin. Part tiled. Velux window to rear.

Bedroom Two

4.3m x 3m (14'1" x 9'10")

Window to rear. Loft hatch.

Bedroom Three

3.7m x 2.9m (12'1" x 9'6")

Window to side. Loft hatch. Fitted wardrobe.

Bedroom Four

3m x 2.4m (9'10" x 7'10")

Window to side. Loft hatch

Family Bathroom

Obscure window to side. Suite comprising panelled bath with mixer taps and shower attachment, pedestal wash hand basin and low level WC. Part tiled walls.

EXTERIOR

Garage

Up and over door. Power and light connected.

Front Garden

Drive-way providing off street parking for numerous vehicles. Laurel Hedge. Access to rear garden via two timber side gates.

Rear Garden

Commencing with patio area. Mainly laid to lawn. Timber shed with light and power connected to

remain. Fence to borders. Access to front via two timber side gates.

Services

Gas - Mains

Electric - Mains

Water - Mains

Drainage - Mains

Heating - Gas Central Heating

Local Authority - Maldon District

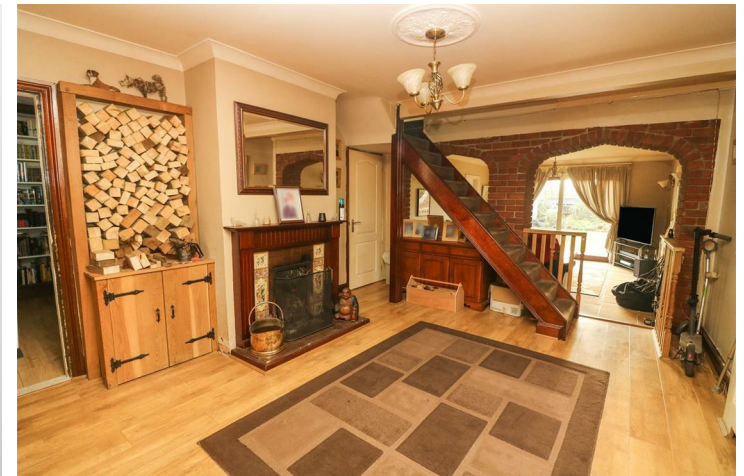
Council- Band E

Viewings

Strictly by appointment only through the selling agent Paul Mason Associates on 01621 742310.

Important Notices

We wish to inform all prospective purchasers that we have prepared these particulars including text, photographs and measurements as a general guide. Room sizes should not be relied upon for carpets and furnishings. We have not carried out a survey or tested the services, appliances and specific fittings. These particulars do not form part of a contract and must not be relied upon as statement or representation of fact.



Paul Mason Associates

35 The Street
Latchingdon
Chelmsford
Essex
CM3 6JP
T: 01621 742 310

Bruce House
17 The Street
Hatfield Peverel
Chelmsford
CM3 2DP
T: 01245 382 555

Sales | Lettings | Development | Investment

F: 01245 381257 E: info@paulmasonassociates.co.uk www.paulmasonassociates.co.uk

Paul Mason Associates Limited Registered in England Number - 6767946
Registered Office - Bruce House, The Street, Hatfield Peverel CM3 2DP





Paul Mason Associates

35 The Street
Latchingdon
Chelmsford
Essex
CM3 6JP
T: 01621 742 310

Bruce House
17 The Street
Hatfield Peverel
Chelmsford
CM3 2DP
T: 01245 382 555

Sales | Lettings | Development | Investment

F: 01245 381257 E: info@paulmasonassociates.co.uk www.paulmasonassociates.co.uk

Paul Mason Associates Limited Registered in England Number - 6767946
Registered Office - Bruce House, The Street, Hatfield Peverel CM3 2DP

