

# Paul Mason Associates



54  
Main Road

Main Road, St. Lawrence, Essex, CM0 7NA

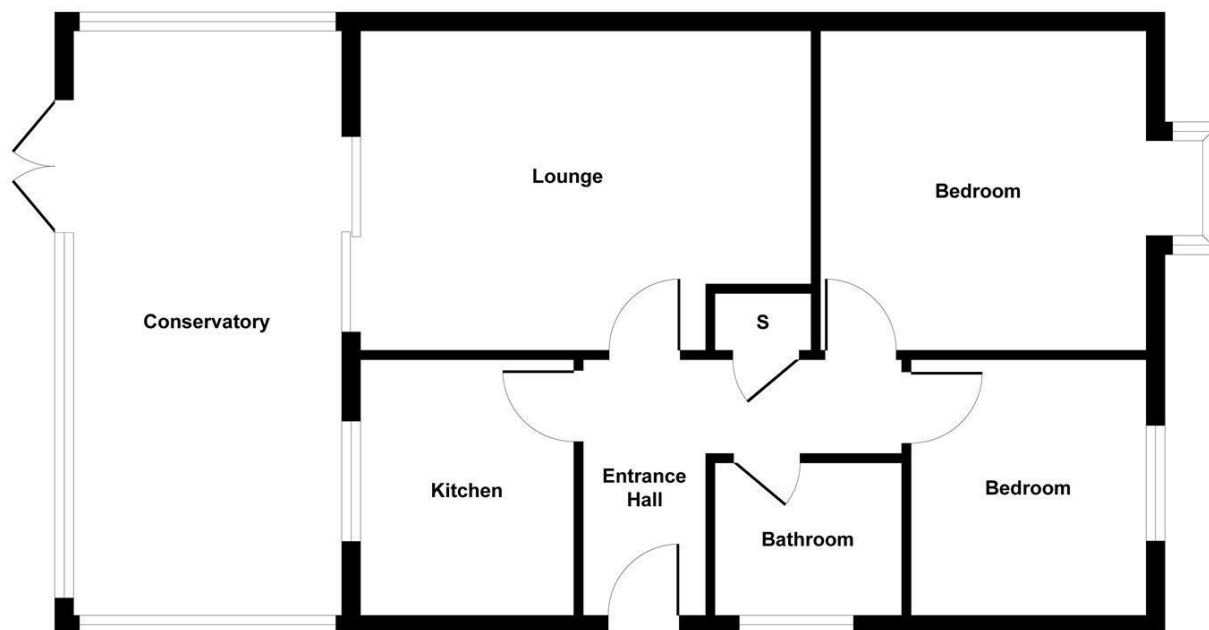
£342,995



- Detached two bedroom bungalow
- Refitted kitchen
- Refitted bathroom
- Lounge with log burner
- Full length conservatory across the back
- Incredibly well presented
- Well established rear garden
- Garage
- Waterside village location
- EPC -D

This well presented two double bedroom detached bungalow is conveniently located within walking distance of the popular St Lawrence Bay Sailing Club, shops, restaurants and pleasant riverside walks. The accommodation includes a hallway, lounge/dining room with log burner, refitted kitchen, two double bedrooms and a re-fitted family bathroom and a full length conservatory across the rear. Externally the property also offers a well maintained front and rear garden. The property has parking to the side for multiple cars along with a single garage. Viewing comes highly recommended to fully appreciate the size and standard of the accommodation on offer.

Paul Mason Associates



Floor Plan  
Approximate Floor Area  
755 sq. ft  
(70.20 sq. m)

Approx. Gross Internal Floor Area 755 sq. ft / 70.20 sq. m  
Produced by Elements Property

Energy Efficiency Rating		Environmental Impact (CO <sub>2</sub> ) Rating	
Current	Potential	Current	Potential
	91		
Very energy efficient - lower running costs		Very environmentally friendly - lower CO <sub>2</sub> emissions	
(92 plus) A		(92 plus) A	
(81-91) B		(81-91) B	
(69-80) C		(69-80) C	
(55-68) D	63	(55-68) D	
(39-54) E		(39-54) E	
(21-38) F		(21-38) F	
(1-20) G		(1-20) G	
Not energy efficient - higher running costs		Not environmentally friendly - higher CO <sub>2</sub> emissions	
England & Wales	EU Directive 2002/91/EC	England & Wales	EU Directive 2002/91/EC

## Distances

Ormiston Rivers Academy - 7.9 miles

Southminster Railway Station - 6.0 miles

Burnham-on-Crouch - 8.5 miles

Maldon Town Centre - 13.1 miles

Southend (London) Airport - 26.4 miles

## ACCOMMODATION

### Entrance Hall

Original solid wood door to front, loft hatch with pull down ladder, storage cupboard housing hot water cylinder, doors to accommodation.

### Kitchen

3.1m x 2.5m (10'2" x 8'2" )

Refitted kitchen with units fitted to eye and base level with laminate work surfaces. Inset stainless steel sink with drainer, mixer taps. Integrated electric cooker and oven with extractor fan over. Space for fridge freezer, slimline dishwasher. Coved ceiling. Glazed window to side and rear.

### Lounge/Diner

4.7m x 3.4m (15'5" x 11'1" )

Log burner, coved ceiling, glazed sliding patio doors into:

### Conservatory

6.3m x 3m (20'8" x 9'10" )

Glazed window's to all sides. French doors opening to rear garden.

### Bedroom One

3.7m x 3.3m (12'1" x 10'9" )

Glazed window to front, fitted triple wardrobe and dresser.

### Bedroom Two

3.5m x 2.7m (11'5" x 8'10" )

Glazed window to front, fitted double wardrobe.

### Family Bathroom

Re-fitted three piece suite comprising an Aqualisa corner shower cubicle with mixer taps and shower head over. Concealed w.c. Vanity wash hand basin. Extractor fan. Heated towel rail. Inset spotlights. Part tiled walls. Glazed window to side.

## EXTERIOR

### Garage

Up and over door with power and lighting connected.

### Front Garden

Driveway providing parking for multiple cars. Access to the single garage and entrance door. Outside lighting. Iron gate leading to the rear garden. Iron fence to borders at the front with mainly laid to lawn with flower and shrub borders.

### Rear Garden

Patio area and pathway, laid to lawn, patio seating area, pathway to garage. Various flowers and shrubs borders. Access to front via iron side gate.

### Services

Gas- N/A

Electric- Mains

Water- Mains

Drainage- Mains

Heating- Electric Central Heating

Local Authority - Maldon District

Council - Tax Band - C

### Viewings

Strictly by appointment only through the selling agent Paul Mason Associates on 01621 742310.

### Important Notices

We wish to inform all prospective

purchasers that we have prepared these particulars including text, photographs and measurements as a general guide. Room sizes should not be relied upon for carpets and furnishings. We have not carried out a survey or tested the services, appliances and specific fittings. These particulars do not form part of a contract and must not be relied upon as statement or representation of fact.





**Paul Mason** Associates

35 The Street  
Latchingdon  
Chelmsford  
Essex  
CM3 6JP

T: 01621 742 310

Bruce House  
17 The Street  
Hatfield Peverel  
Chelmsford  
CM3 2DP

T: 01245 382 555

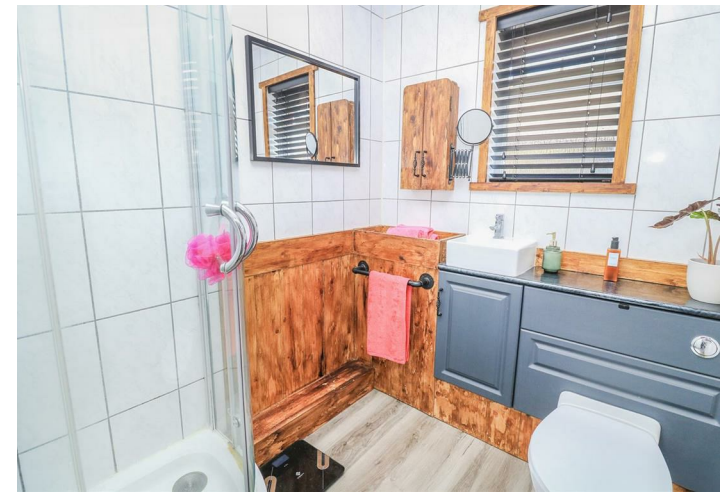
Sales | Lettings | Development | Investment

F: 01245 381257 E: [info@paulmasonassociates.co.uk](mailto:info@paulmasonassociates.co.uk) [www.paulmasonassociates.co.uk](http://www.paulmasonassociates.co.uk)

Paul Mason Associates Limited Registered in England Number - 6767946  
Registered Office - Bruce House, The Street, Hatfield Peverel CM3 2DP







Paul Mason Associates

35 The Street  
Latchingdon  
Chelmsford  
Essex  
CM3 6JP

T: 01621 742 310

Bruce House  
17 The Street  
Hatfield Peverel  
Chelmsford  
CM3 2DP

T: 01245 382 555

Sales | Lettings | Development | Investment

F: 01245 381257 E: info@paulmasonassociates.co.uk www.paulmasonassociates.co.uk

Paul Mason Associates Limited Registered in England Number - 6767946  
Registered Office - Bruce House, The Street, Hatfield Peverel CM3 2DP







Paul Mason Associates

35 The Street  
Latchingdon  
Chelmsford  
Essex  
CM3 6JP

T: 01621 742 310

Bruce House  
17 The Street  
Hatfield Peverel  
Chelmsford  
CM3 2DP

T: 01245 382 555

Sales | Lettings | Development | Investment

F: 01245 381257 E: [info@paulmasonassociates.co.uk](mailto:info@paulmasonassociates.co.uk) [www.paulmasonassociates.co.uk](http://www.paulmasonassociates.co.uk)

Paul Mason Associates Limited Registered in England Number - 6767946  
Registered Office - Bruce House, The Street, Hatfield Peverel CM3 2DP







Paul Mason
Associates

35 The Street  
 Latchingdon  
 Chelmsford  
 Essex  
 CM3 6JP  
 T: 01621 742 310

Bruce House  
 17 The Street  
 Hatfield Peverel  
 Chelmsford  
 CM3 2DP  
 T: 01245 382 555

Sales | Lettings | Development | Investment

F: 01245 381257 E: [info@paulmasonassociates.co.uk](mailto:info@paulmasonassociates.co.uk) [www.paulmasonassociates.co.uk](http://www.paulmasonassociates.co.uk)

Paul Mason Associates Limited Registered in England Number - 6767946  
 Registered Office - Bruce House, The Street, Hatfield Peverel CM3 2DP

