



Stour

TWO BEDROOM HOME



 REDROW



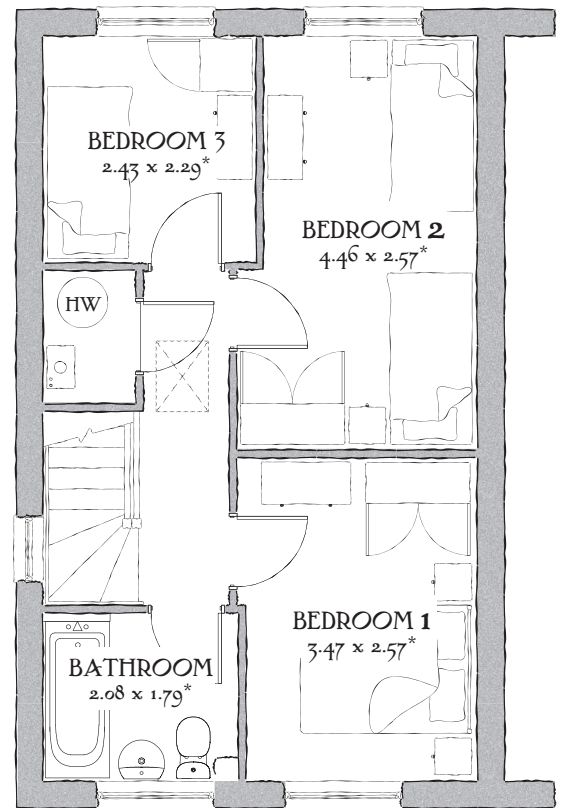
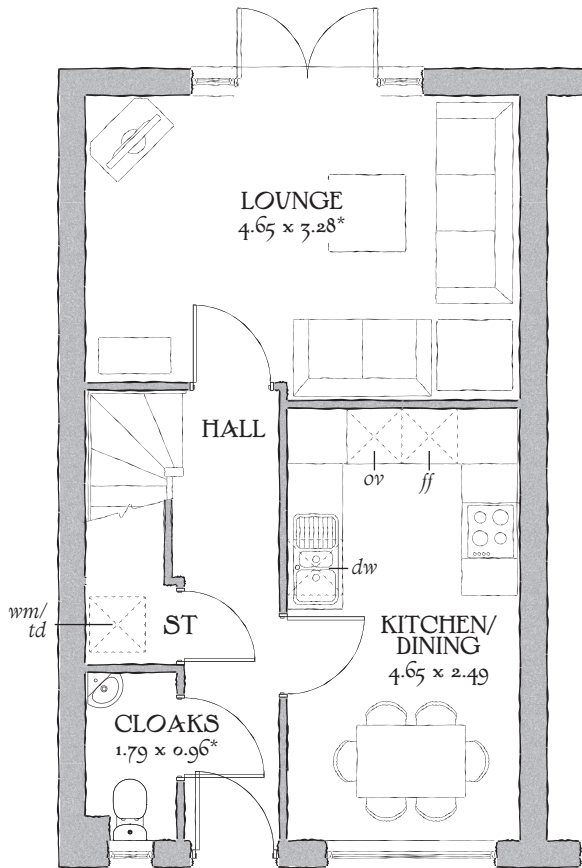
Stour

TWO BEDROOM HOME



 REDROW

Stour



816 SQ FT | THREE BEDROOM HOME


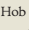
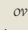
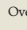
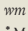
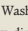
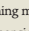
GROUND FLOOR

Lounge	15'3" x 10'9"	4.65 x 3.28 m*
Kitchen/ Dining	15'3" x 8'2"	4.65 x 2.49 m
Cloaks	5'10" x 3'2"	1.79 x 0.96 m*

FIRST FLOOR

Bedroom 1	11'5" x 8'5"	3.47 x 2.57 m*
Bedroom 2	14'8" x 8'5"	4.46 x 2.57 m*
Bedroom 3	8'0" x 7'6"	2.43 x 2.29 m*
Bathroom	6'10" x 5'10"	2.08 x 1.79 m*

Customers should note this illustration is an example of The Broadway housetype. All dimensions indicated are approximate and the furniture layout is for illustrative purposes only. Homes may be 'handed' (mirror image) versions of the illustrations, and may be detached, semi-detached or terraced. Materials used may differ from plot to plot including render and roof tile colours. Detailed plans and specifications are available for inspection for each plot at our Marketing Suite during working hours and customers must check their individual specifications prior to making a reservation.

KEY  Hob  Oven  Fridge/freezer  Dishwasher space  Washing machine space  Tumble dryer space  Hot Water Cylinder
* Max dimensions Note: Bedroom dimensions taken into wardrobe recess. All wardrobes are subject to site specification. Please see Sales Consultant for further details.

Traditional homes, built the way you remember

 **REDROW**
A BETTER WAY TO LIVE