



## Hakewill Mews

Ixworth Road  
Thurston  
Bury St Edmunds  
Suffolk  
IP31 3UJ

T: 01359 300 785

E: [hakewillmews.suff@persimmonhomes.com](mailto:hakewillmews.suff@persimmonhomes.com)  
[persimmonhomes.com/hakewill-mews](https://persimmonhomes.com/hakewill-mews)

## Head Office

Persimmon Homes Suffolk  
Persimmon House  
Orion Court, Orion Avenue  
Great Blakenham  
Ipswich  
Suffolk  
IP6 0LW

T: 01473 927 400

E: [suff.sales@persimmonhomes.com](mailto:suff.sales@persimmonhomes.com)  
[persimmonhomes.com](https://persimmonhomes.com)



Issue: November 2024 Ref: 315-982

Persimmon plc, Registered office: Persimmon House, Fulford, York YO19 4FE Registered in England no: 1818486

Hakewill Mews is a marketing name only. The copyright in this document and design is confidential to and the property of Persimmon Homes Developments 2024. These details are intended to give a general idea of the type of home but they do not form part of any specification or contract. The dimensions are approximate and may vary depending on internal finish. By the time you read this some of the details may have changed because of the Persimmon Homes policy of continually updating and improving design features. Therefore, please be sure to check the plan and specification in the sales office to keep you up-to-date with the latest improvements. The vendors of this property give notice that: (i) the particulars are produced in good faith, are set out as a general guide only and do not constitute any part of a contract; (ii) no person in the employment of Persimmon Homes or their authorised agents has any authority to make or give any representation or warranty whatever in relation to this property. Persimmon Homes is compliant with the New Homes Quality Code. Please ask your sales advisor if you have any further questions.



# Persimmon

Together, we make your home

## Hakewill Mews

Thurston • Suffolk



**Persimmon**

Together, we make your home

# Together, we make your home

When it comes to designing a new development, we apply the same philosophy every time – make it unique, make it personal. That's because we understand your new home is more than simply bricks and mortar. It's a private place of sanctuary where we hope you'll laugh, entertain and escape for many years to come.

**"With over 50 years of building excellence, find out more about us on page 4"**



**5 stars!**

We're proud of our 5 star builder status awarded by the national Home Builders Federation (HBF). It's a reflection of our commitment to delivering excellence always and putting our customers at the heart of all we do.



Hakewill Mews

## Find out more

About Persimmon Homes	4
Your journey with us and schemes to help	6
Living at Hakewill Mews	9
Our homes	10
Specifications	20
Sustainability	22
Personalise with Finishing Touches	24
Proud to be building communities	26
About our Eco Range	28





Who we are

## A little bit about us

You're about to make one of the most exciting investments of your life! A beautiful place to call home for years to come. Here are some reasons to invest in a Persimmon home...

### Over 50 years of expertise

We've been building homes and communities since the early seventies, and just as fashions have moved on, so too has construction. Over half a century we've perfected processes, fine-tuned materials and honed skills to make us one of today's most modern and progressive home builders.

### Sustainability mission

We're committed to reducing our impact on the planet and building for a better tomorrow, with a dedicated in-house team focused on this. [Read more on page 22](#)

## Persimmon in numbers

It's not all about numbers we know, but to give you sense of scale here are a few:

**14,868**

homes  
sold in  
2022

**200+**

locations  
across  
the UK

**5000+**

employees  
make it all  
happen

**700+**

apprentices  
taken on  
each year

**£505.6m**

invested in  
local communities  
in 2022



## "Building sustainable homes and community hubs"

### Save money on your energy bills

The increased thermal retention from our insulation and double glazing, along with reduced water use thanks to efficient appliances, mean you'll automatically save money on your energy and water bills – and with the rising cost of living, this can make a real difference.



Take a look at the recently published HBF Watt a Save report to find out how much you could save.

### The Persimmon Pledge

The Persimmon Pledge is our commitment to making sure you receive exceptional customer service and relevant communications before, during and after you've moved in.

Find out more about the Persimmon Pledge.



### Accessible homes

It's crucial that your new home works perfectly for you and your needs. We build in line with Approved Document M accessibility requirements.



Scan the QR code to find out what each rating means.

### Giving back

We do everything we can to give back to our communities and proudly contribute towards community hubs, children's play areas, schools and sports facilities.

Our 'Community Champions' and 'Building Futures' programmes help to raise funds for projects and charities across Great Britain. If you'd like to get involved visit [persimmonhomes.com/community-champions](https://persimmonhomes.com/community-champions) to see if you could apply to support your local community.

### Help when you need it

You'll have a dedicated customer care helpline, plus cover for emergencies like complete loss of electricity, gas, water or drainage.

### 10-year warranty

When you buy a Persimmon home it comes complete with a 'peace of mind' 10-year insurance-backed warranty and our own two-year Persimmon warranty.

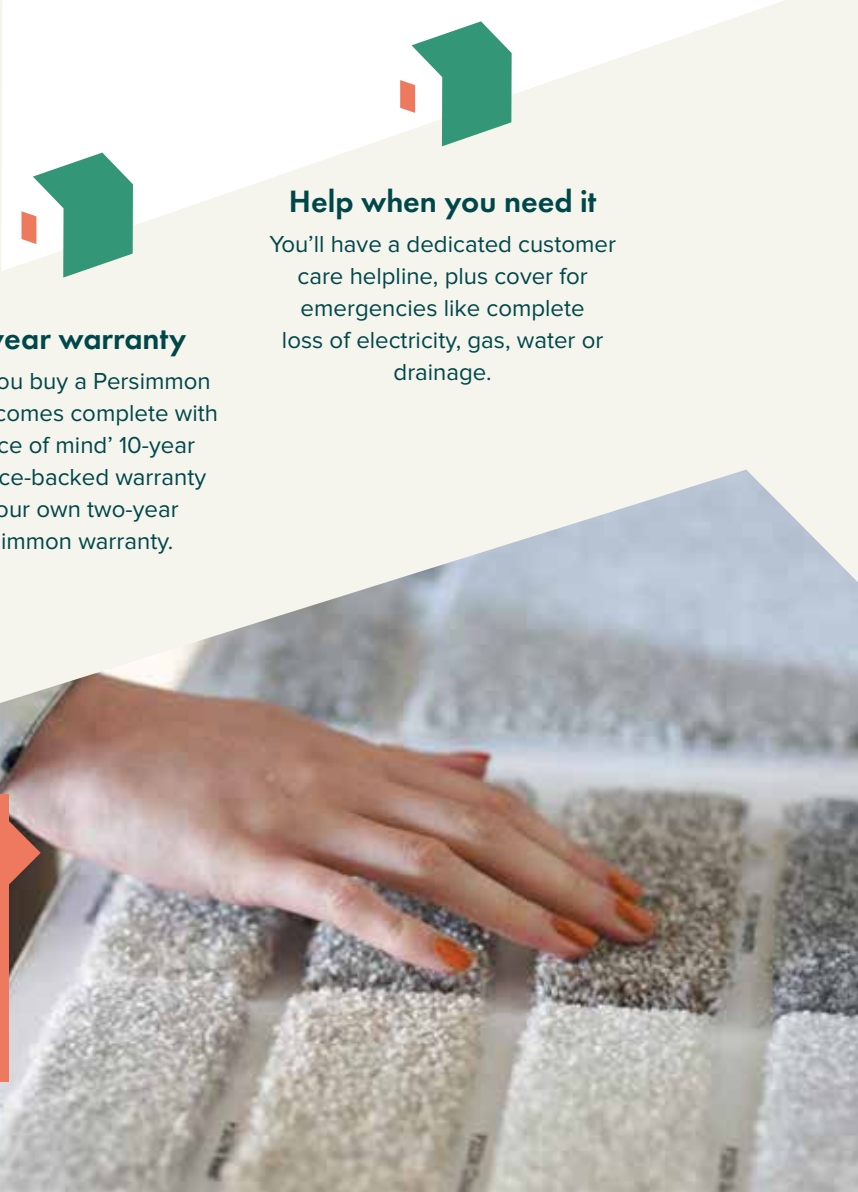
### Happy hour

We run Customer Construction Clinics from our on-site sales offices each Monday from 5-6pm. Pop in to see the team both during and after you've moved in to your new home.

### Finishing Touches

We know you'll want to make your home your own, so we created 'Finishing Touches', our home personalisation service.

Read more on page 24





With you all the way

# Your journey with us

From finding your perfect new home to moving in,  
we're here to help every step of the way.

1.



2.



3.

## Reservation

So you've seen a home you love? Speak to one of our friendly sales advisors who will help you secure your dream home.

## Solicitor

You'll need to instruct a solicitor or conveyancer at the point of reservation. Your sales advisor can recommend a local independent company.

## Mortgage application

Most people will need to apply for a mortgage. We can recommend independent financial advisors to give you the best impartial advice.

4.



5.



6.

## Personalise!

The bit you've been waiting for! Making the final choices for your new home. Depending on build stage you can also choose from a range of Finishing Touches.

## Exchange contracts

One step closer to moving in – this is where we exchange contracts and your solicitor will transfer your deposit.

## Quality assurance

Your home will be thoroughly inspected by site teams and will also have an Independent Quality Inspection to make sure it's ready for you to move into.

7.



8.



9.

## Home demo

Another exciting milestone! Here's where you get to see your new home before completion. You'll be shown how everything works and any questions can be answered.

## Handover

The moment you've been waiting for! The paperwork has been completed, the money transferred and now it's time to move in and start unpacking...

## After-care

Our site and customer care teams will support you every step of the way. You'll receive a dedicated customer care line number to deal with any issues.

[persimmonhomes.com](https://www.persimmonhomes.com)



# Need help?

One of the best things about buying a new-build home is the amazing offers and schemes you could benefit from. T&Cs apply.



**PART**  
EXCHANGE



**HOME**  
CHANGE



**EARLY**  
**BIRD**



**DEPOSIT UNLOCK**

Deposit Unlock



**Bank of Mum  
and Dad**

Bank of Mum  
and Dad



**DEPOSIT BOOST**

Deposit Boost



**OWN NEW**  
**RATE REDUCER**

Own New Rate Reducer





- ④ Choice of 2, 3, 4 & 5-bedroom homes
- ④ Less than a mile away from local train station
- ④ Surrounded by the beautiful Suffolk countryside
- ④ Close to Bury St Edmunds, Ipswich and Cambridge
- ④ Good range of local amenities



### Scan me!

For availability and pricing on our beautiful new homes at Hakewill Mews.



Thurston • Suffolk

# Hakewill Mews

Perfect for growing families, first-time buyers and house movers, explore our stunning Hakewill Mews development offering energy-efficient one, two, three, four and five-bedroom homes.

Settled on the edge of the historic village of Thurston, the development is surrounded by the beautiful Suffolk countryside with easy access to an excellent variety of local amenities. Home to a traditional pub or two, plus a range of shops and facilities, the village also has an award-winning garden centre and tearoom to enjoy.

## Nature's beauty

A rural village location, the development is surrounded by stunning Suffolk countryside, plus Thetford Forest is also nearby for relaxing weekend walks. And for coastline adventures, the Suffolk and Essex Coast (and Heath National Landscape) is just over an hour away by car.

## Family-friendly amenities

From local village shops and facilities to the wealth of what's on offer in Bury St Edmunds - just 15 minutes away by car - Thurston has it all. For education opportunities, both Thurston Church of England Primary Academy and Thurston College, which includes sixth-form tuition, are rated 'Good' by Ofsted.

## Convenient links

With its own train station, Thurston offers convenient travel to the county's main cities, towns and beyond - including Cambridge, Ipswich and Norwich. By car, a good A-road network gives you quick access to the M11, connecting you to London. And for international travel, Stansted Airport is an hour's drive away.

## EXPLORE

Start exploring...

Thurston train station  
**0.7 mile**

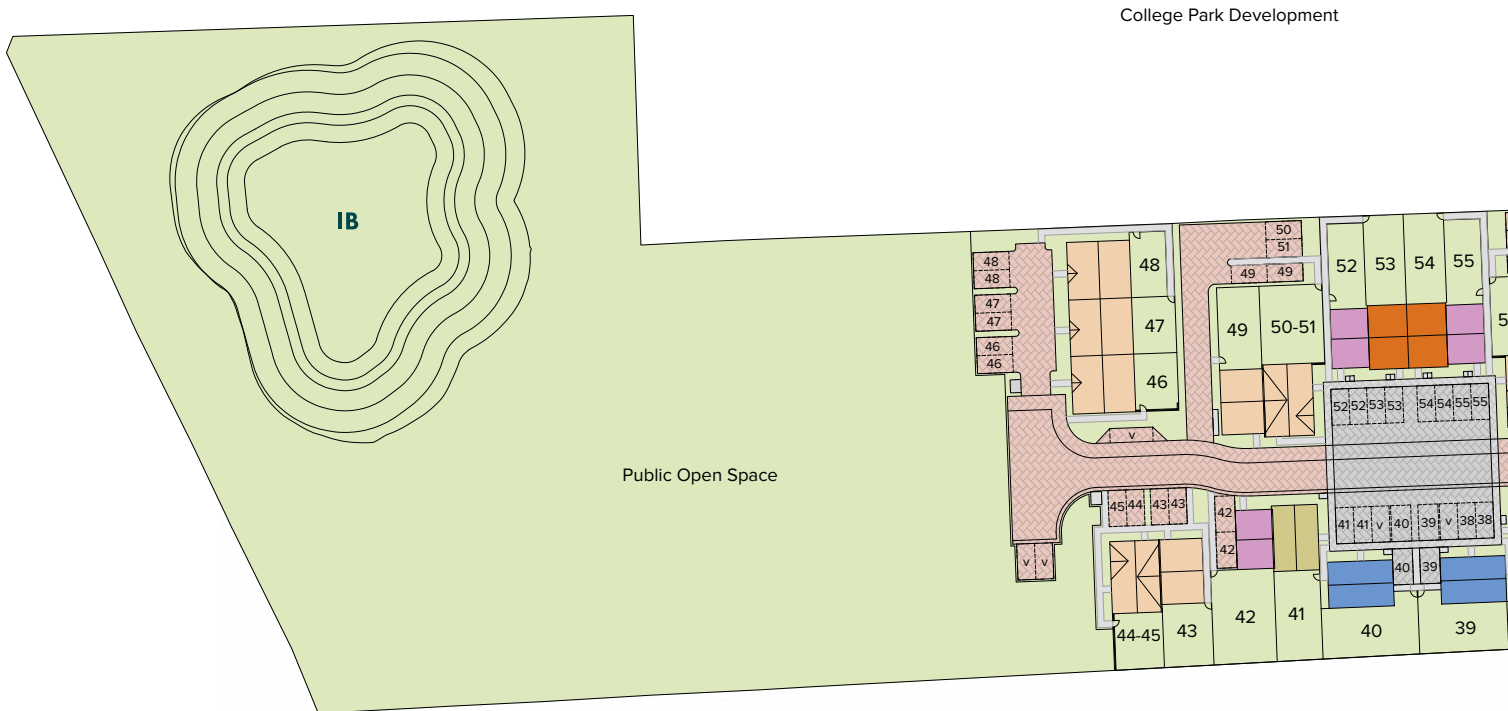
Bury St Edmunds  
**6.7 miles**

Ipswich  
**22.8 miles**

Cambridge  
**35.5 miles**



## Hakewill Mews





This site layout is intended for illustrative purposes only, and may be subject to change, for example, in response to market demand, ground conditions or technical and planning reasons. Trees, planting and public open space shown are indicative, actual numbers and positions may vary. This site plan does not form any part of a warranty or contract. Further information is available from a site sales advisor. The location of the affordable housing on this plan is indicative only and both the location and number of affordable housing plots may be subject to change.



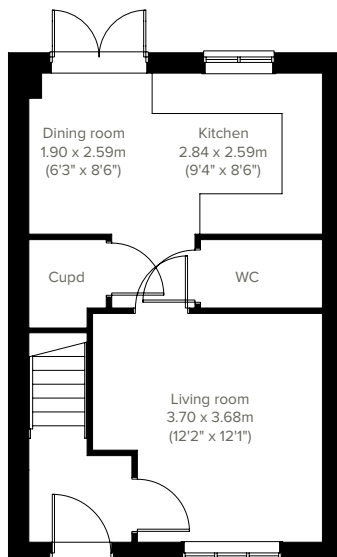


2 bedroom home

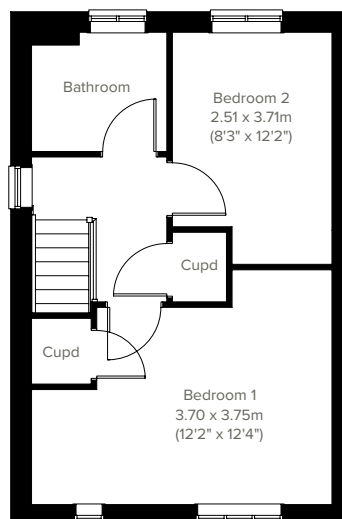
# The Addlebrough



The Addlebrough features a bright open plan kitchen/dining room with French doors leading into the garden and a large, spacious front-aspect living room. Upstairs there are two nicely-proportioned bedrooms and a family-sized bathroom. With plenty of storage cupboards too, this house is perfect for first-time buyers and young professionals.



**GROUND FLOOR**



**1ST FLOOR**

Please note that elevation treatments and window/door positions may vary from plot to plot. Plot specific information will be confirmed on your reservation check list.

This information is for guidance only and does not form any part of any contract or constitute a warranty. Illustrations are of typical elevations and may vary. Floor plans are not drawn to scale and window positions may vary. Room dimensions are subject to a +/- 50mm (2") tolerance and are based on the maximum dimensions in each room. Please consult your sales advisor on site for specific elevations, room dimensions and external finishes. The EPC ratings are estimated and vary between home types, orientation and developments. Accessible and adaptable dwelling requirements are based upon the internal arrangements only. External requirements may vary between local authority and developments.

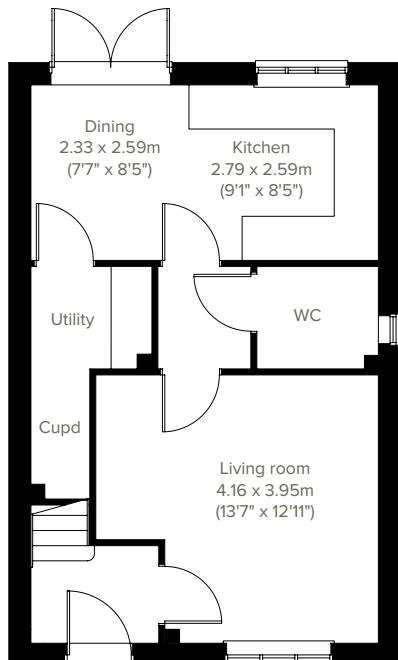


# The Galloway

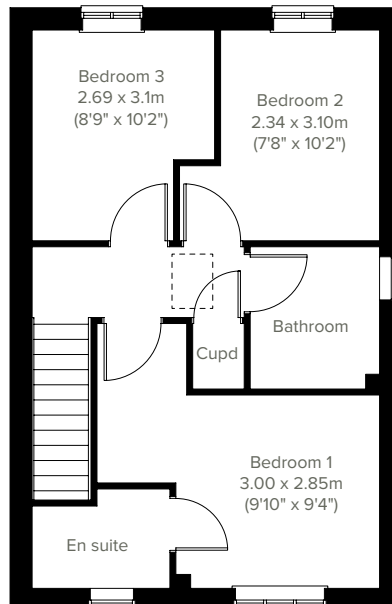
3 bedroom home



The popular Galloway is a three-bedroom family home with bright and modern open plan kitchen/dining room with French doors leading into the garden. The downstairs WC, two handy storage cupboards and en suite to bedroom one mean it ticks all the boxes for practical family living.



**GROUND FLOOR**



**1ST FLOOR**

Please note that elevation treatments and window/door positions may vary from plot to plot. Plot specific information will be confirmed on your reservation check list.

This information is for guidance only and does not form any part of any contract or constitute a warranty. Illustrations are of typical elevations and may vary. Floor plans are not drawn to scale and window positions may vary. Room dimensions are subject to a +/- 50mm (2") tolerance and are based on the maximum dimensions in each room. Please consult your sales advisor on site for specific elevations, room dimensions and external finishes. The EPC ratings are estimated and vary between home types, orientation and developments. Accessible and adaptable dwelling requirements are based upon the internal arrangements only. External requirements may vary between local authority and developments.



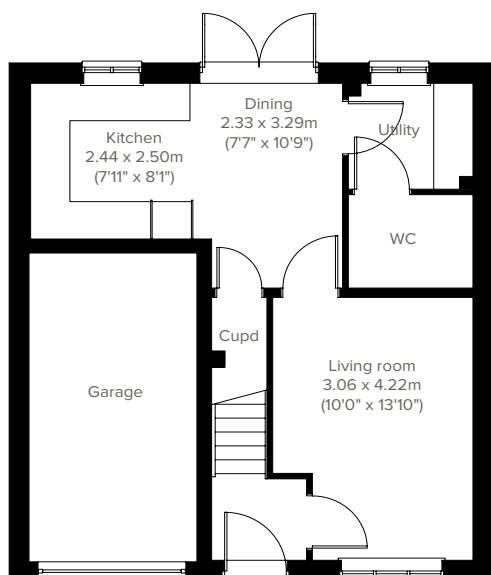


3 bedroom home

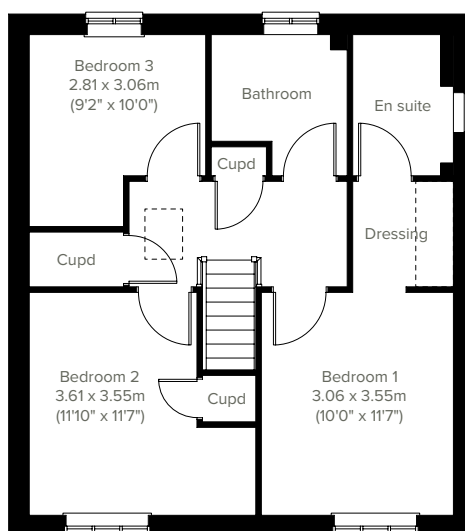
# The Kingley



An attractive three-bedroom family home, the Kingley is ideal for modern living. The bright open plan kitchen/dining room has French doors leading into the garden - perfect for entertaining and family meals. The downstairs WC and four storage cupboards take care of everyday storage. Plus there's an en suite and dressing room to bedroom one, modern family bathroom and integral garage.



## GROUND FLOOR



## 1ST FLOOR

Please note that elevation treatments and window/door positions may vary from plot to plot. Plot specific information will be confirmed on your reservation check list.

This information is for guidance only and does not form any part of any contract or constitute a warranty. Illustrations are of typical elevations and may vary. Floor plans are not drawn to scale and window positions may vary. Room dimensions are subject to a +/- 50mm (2") tolerance and are based on the maximum dimensions in each room. Please consult your sales advisor on site for specific elevations, room dimensions and external finishes. The EPC ratings are estimated and vary between home types, orientation and developments. Accessible and adaptable dwelling requirements are based upon the internal arrangements only. External requirements may vary between local authority and developments.

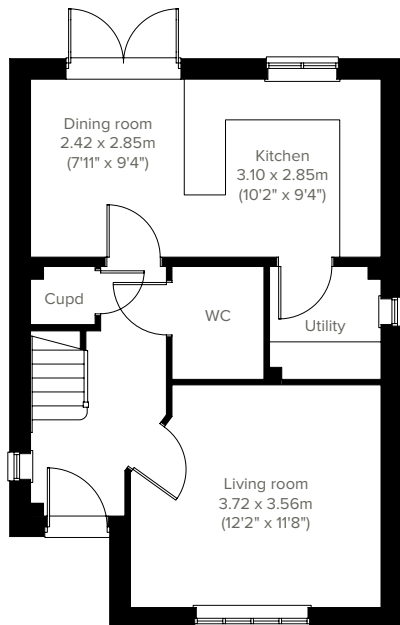


# The Sherwood

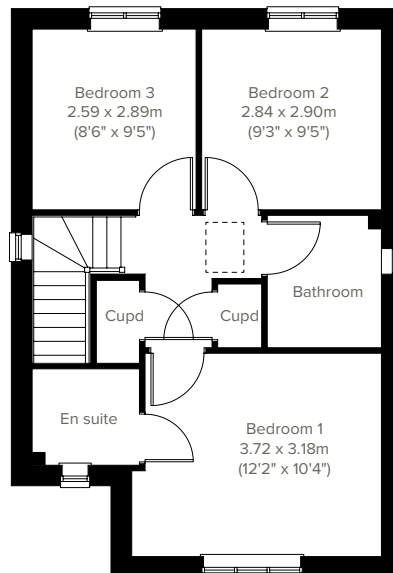
3 bedroom home



The Sherwood is a modern home ideal for family life. This three-bedroom home features an open plan kitchen/dining room with French doors leading into the garden, a handy utility room, a front-aspect living room, plus under-stairs storage and a WC. The first floor has three good-sized bedrooms, one with an en suite, and the main family bathroom.



**GROUND FLOOR**



**1ST FLOOR**

Please note that elevation treatments and window/door positions may vary from plot to plot. Plot specific information will be confirmed on your reservation check list.

This information is for guidance only and does not form any part of any contract or constitute a warranty. Illustrations are of typical elevations and may vary. Floor plans are not drawn to scale and window positions may vary. Room dimensions are subject to a +/- 50mm (2") tolerance and are based on the maximum dimensions in each room. Please consult your sales advisor on site for specific elevations, room dimensions and external finishes. The EPC ratings are estimated and vary between home types, orientation and developments. Accessible and adaptable dwelling requirements are based upon the internal arrangements only. External requirements may vary between local authority and developments.



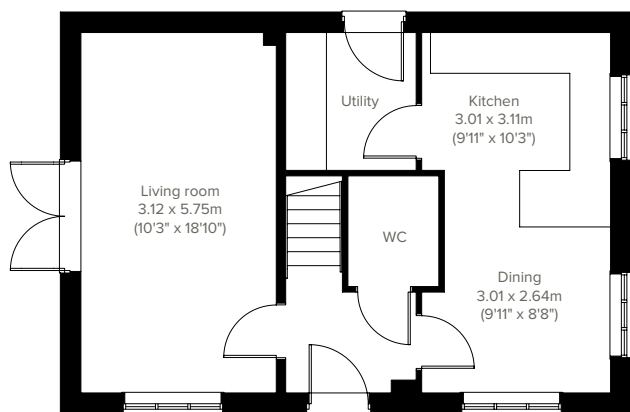


3 bedroom home

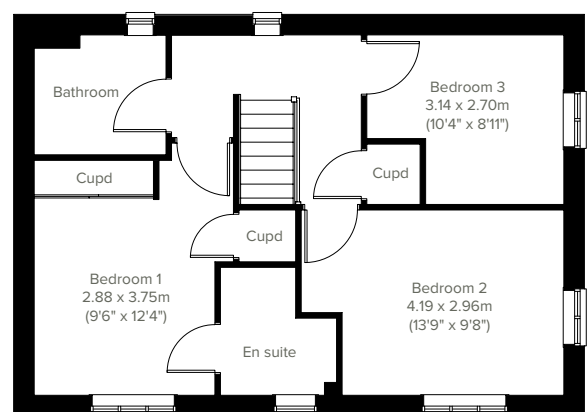
# The Barndale



A thoughtfully-designed three-bedroom family home with much to offer, the Barndale has a bright and modern open plan kitchen/dining room leading to a handy utility room. The spacious living room has French doors leading into the garden. The inner hallway, downstairs WC and cupboards take care of everyday storage. Plus there's an en suite to bedroom one and a family bathroom.



**GROUND FLOOR**



**1ST FLOOR**

Please note that elevation treatments and window/door positions may vary from plot to plot. Plot specific information will be confirmed on your reservation check list.

This information is for guidance only and does not form any part of any contract or constitute a warranty. Illustrations are of typical elevations and may vary. Floor plans are not drawn to scale and window positions may vary. Room dimensions are subject to a +/- 50mm (2") tolerance and are based on the maximum dimensions in each room. Please consult your sales advisor on site for specific elevations, room dimensions and external finishes. The EPC ratings are estimated and vary between home types, orientation and developments. Accessible and adaptable dwelling requirements are based upon the internal arrangements only. External requirements may vary between local authority and developments.

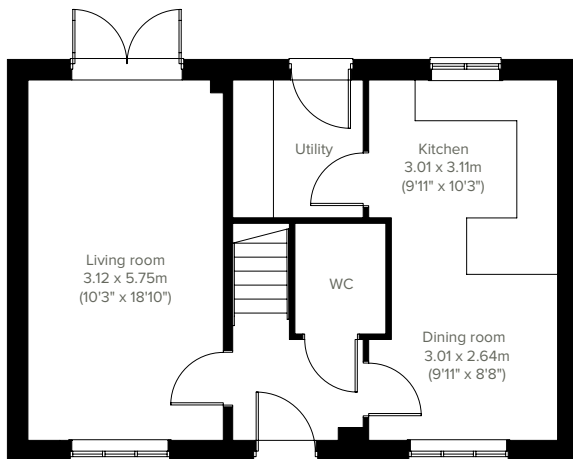


# The Charndale

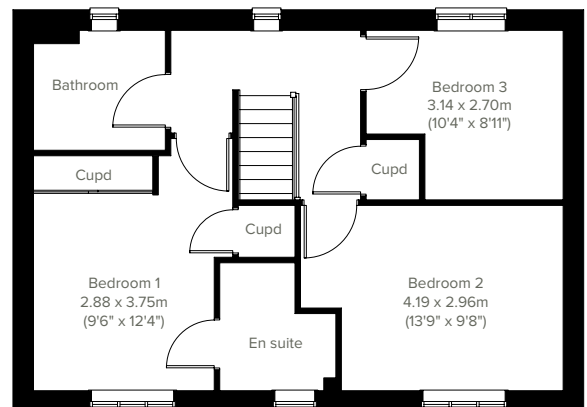
3 bedroom home



The Charndale is a popular three-bedroom family home with much to offer, it has a bright and modern open plan kitchen/dining room leading to a handy utility room. The spacious living room has French doors leading into the garden. Upstairs there are three good sized bedrooms, bedroom one benefiting from an en suite, plenty of storage and a modern family bathroom.



**GROUND FLOOR**



**1ST FLOOR**

Please note that elevation treatments and window/door positions may vary from plot to plot. Plot specific information will be confirmed on your reservation check list.

This information is for guidance only and does not form any part of any contract or constitute a warranty. Illustrations are of typical elevations and may vary. Floor plans are not drawn to scale and window positions may vary. Room dimensions are subject to a +/- 50mm (2") tolerance and are based on the maximum dimensions in each room. Please consult your sales advisor on site for specific elevations, room dimensions and external finishes. The EPC ratings are estimated and vary between home types, orientation and developments. Accessible and adaptable dwelling requirements are based upon the internal arrangements only. External requirements may vary between local authority and developments.



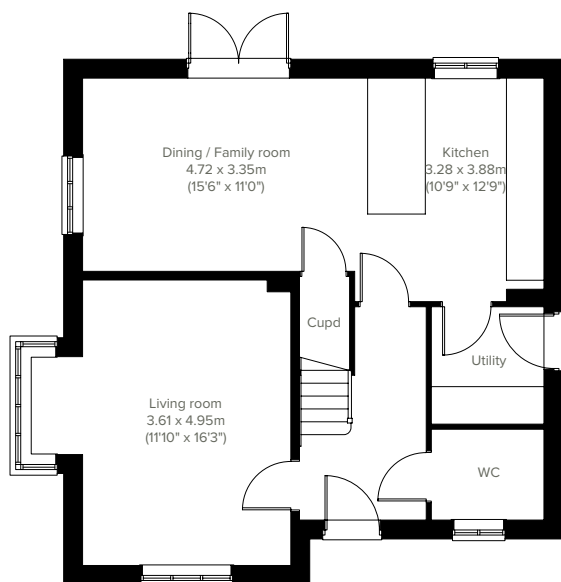


4 bedroom home

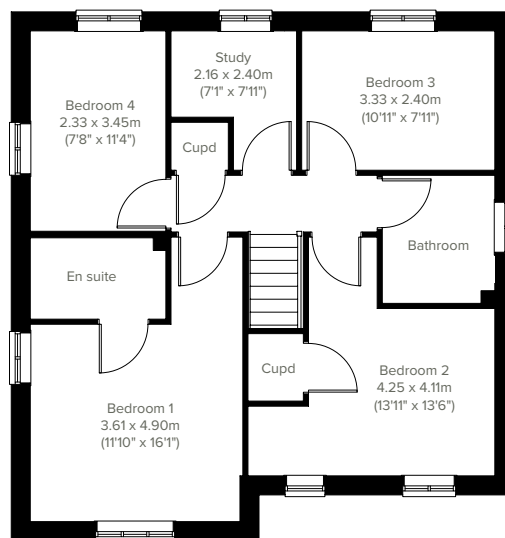
# The Lambridge



The Lambridge is a four-bedroom family home. The spacious kitchen/family/dining room enjoys an open aspect through French doors to the rear garden. There's a bright front-aspect living room with a bay window, a downstairs WC and handy utility. Upstairs you'll find four bedrooms - bedroom one benefiting from an en suite - plus a convenient study, modern-fitted family bathroom and two storage cupboards.



**GROUND FLOOR**



**1ST FLOOR**

Please note that elevation treatments and window/door positions may vary from plot to plot. Plot specific information will be confirmed on your reservation check list.

This information is for guidance only and does not form any part of any contract or constitute a warranty. Illustrations are of typical elevations and may vary. Floor plans are not drawn to scale and window positions may vary. Room dimensions are subject to a +/- 50mm (2") tolerance and are based on the maximum dimensions in each room. Please consult your sales advisor on site for specific elevations, room dimensions and external finishes. The EPC ratings are estimated and vary between home types, orientation and developments. Accessible and adaptable dwelling requirements are based upon the internal arrangements only. External requirements may vary between local authority and developments.

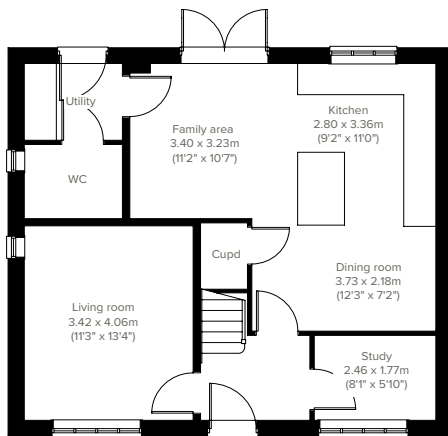


# The Brightstone

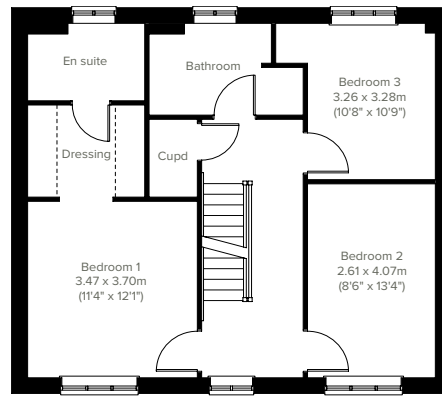
5 bedroom home



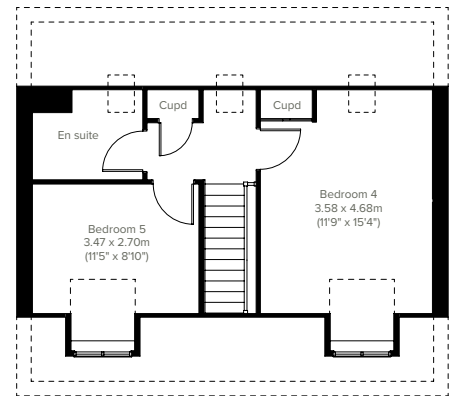
A stunning detached home with an impressive open plan kitchen/dining/family room, the Brightstone has five bedrooms and is perfectly designed for modern family living. Its other features include a bright family living room and separate study. The first floor bedroom one is spacious with a large en suite and dressing area. This floor is home to a further two bedrooms and a family bathroom. The second floor is home to two more bedrooms, both with handy storage cupboards and one with an en suite.



GROUND FLOOR



1ST FLOOR



2ND FLOOR

Please note that elevation treatments and window/door positions may vary from plot to plot. Plot specific information will be confirmed on your reservation check list.

This information is for guidance only and does not form any part of any contract or constitute a warranty. Illustrations are of typical elevations and may vary. Floor plans are not drawn to scale and window positions may vary. Room dimensions are subject to a +/- 50mm (2") tolerance and are based on the maximum dimensions in each room. Please consult your sales advisor on site for specific elevations, room dimensions and external finishes. The EPC ratings are estimated and vary between home types, orientation and developments. Accessible and adaptable dwelling requirements are based upon the internal arrangements only. External requirements may vary between local authority and developments.

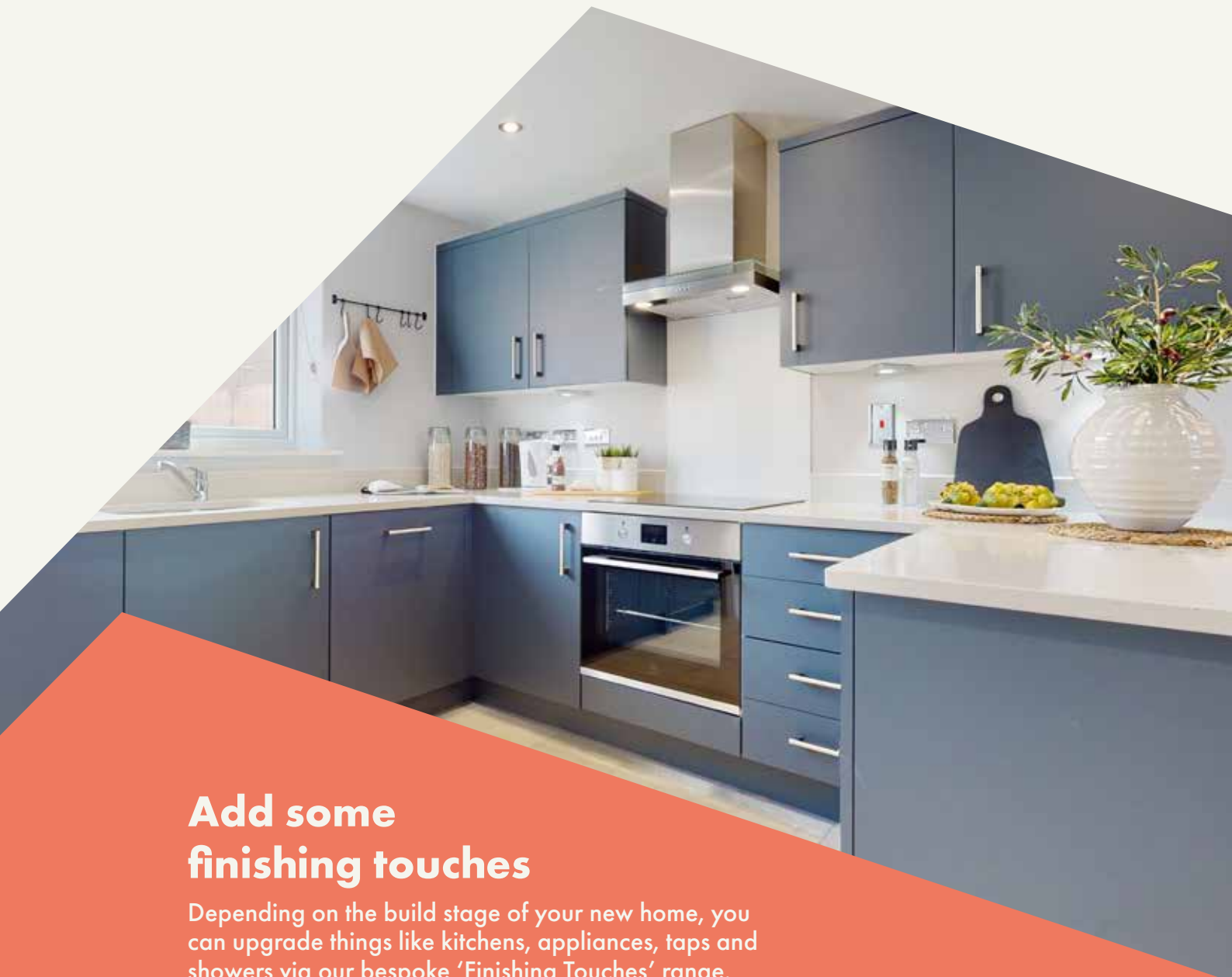




Hakewill Mews

# Specifications

Our homes include these items as standard to ensure you have everything you need to be comfortable from the day you move in. Built for today's modern lifestyles with sustainability in mind.



## Add some finishing touches

Depending on the build stage of your new home, you can upgrade things like kitchens, appliances, taps and showers via our bespoke 'Finishing Touches' range.



## External

### Walls

Traditional cavity walls.

Inner: block.

Outer: Style suited to planned architecture.

### Roof

Tile or slate-effect with PVCu rainwater goods.

### Windows

Double glazed E-glass windows in PVCu frames.

### Doors

GRP-skinned external doors with PVCu frames.

French doors to garden or balcony  
(where applicable).



## Internal

### Ceilings

Painted white.

### Lighting

Pendant or batten fittings with low-energy bulbs.

### Stairs

Staircase painted white.

### Walls

Painted in white emulsion.

### Doors

White pre-finished doors with white hinges.

### Heating

Air source heat pumps with radiators in all main rooms, with thermostatically-controlled valves to bedrooms.

### Insulation

Insulated loft and hatch to meet current building regulations.

### Electrics

Individual circuit breakers to consumer unit and double electric sockets to all main rooms.

### General

Media plate incorporating TV and telecommunication outlets to living room.



## Bathroom

### Suites

White bathroom suites with chrome-finished fittings.

### Extractor fan

Extractor fan to bathroom and en suite  
(where applicable).

### Shower

Mira showers with chrome fittings to en suite.

Where there is no en suite, Mira thermostatic shower with wall mounted shower head.

### Splashbacks and tiling

Splashback to sanitaryware walls in bathroom and en suite. Splashback to bath and full height tiled shower where separate enclosure only.

### General

En suite to bedroom(s) where applicable.



## Security

### Locks

Three-point locking to front and rear doors, locks to all windows (except escape windows).

### Fire

Smoke detectors wired to the mains with battery back-up.



## Garage & Gardens

### Garage

Garage, car ports or parking space.

### Garden

Front lawn turfed or landscaped  
(where applicable).

### Fencing

1.8 metre fence to rear garden, plus gate.



## Kitchen

### General

Fully-fitted kitchen with a choice of doors and laminate worktop with upstands to match (depending on build stage).

### Plumbing

Plumbing for washing machine.

### Appliances

Single electric stainless steel oven and ceramic hob in stainless steel with stainless steel chimney hood.





Energy efficiency built in

# Sustainability

**Our homes are typically 30% more efficient than traditional UK housing, helping you to save money and reduce your impact on the environment.**

We're proud that we already build our homes to high levels of energy efficiency, but there's still a way to go. Our in-house sustainability team is dedicated to our mission to have net zero carbon homes in use by 2030, and for our own operations to be net zero carbon by 2040.

To achieve this, we're working to science-based carbon reduction targets in line with the Paris Agreement's 1.5°C warming pledge, investing in low-carbon solutions and technology that will further reduce the carbon footprints of our homes and our impact on the planet.

## Energy efficiency built in:

- ✓ **PEA rating – B**  
Our typical B rating makes our homes much more efficient than traditional D-rated homes.
- ✓ **Air source heat pumps**  
A great, energy efficient choice for heating your home and water.
- ✓ **Up to 500mm roof space insulation**  
Warmer in winter, cooler in summer, reducing energy bills.
- ✓ **Local links**  
We're located close to amenities and public transport to help reduce your travel footprint.
- ✓ **Argon gas filled double glazing**  
Greater insulation and reduced heat loss.
- ✓ **Ultra-fast broadband**  
FibreNest fibre-to-the-home connectivity helps you live and work at home more flexibly.
- ✓ **Energy efficient lighting**  
We use energy-saving LED lightbulbs in all our homes.
- ✓ **Lower-carbon bricks**  
Our concrete bricks typically use 28% less carbon in manufacture than clay, giving total lifetime carbon savings of 2.4 tonnes of CO<sub>2</sub> per house built.
- ✓ **A-rated appliances**  
Many of our kitchen appliances have a highly efficient A rating.

## Eco goodies

When you move in to your new Persimmon home you'll find some of our favourite eco brands in your Homemove box. These products are plastic free, refillable and ethically sourced.







Your home, your way

# Finishing Touches to make it yours

Our goal is to make your house feel like your home before  
you've even collected the keys.

Key to achieving this is giving you the creative freedom to add your own style and personality to every room through our fabulous Finishing Touches collection.

Featuring the very latest designs from a host of leading brands, Finishing Touches lets you personalise your home inside and out. And rest assured, every upgrade and item available has been carefully chosen to complement the style

and finish of your new home. Of course, the real beauty is that all these extras will be ready for the day you move in.

Thanks to our impressive buying power we can offer almost any upgrade you can imagine at a highly competitive price. It can all be arranged from the comfort and convenience of one of our marketing suites, in a personal design appointment.

## You can choose:



Kitchens



Appliances



Bathrooms



Flooring



Wardrobes



Fixtures & fittings

"One of the most exciting things about buying a brand new home is putting your own stamp on a blank canvas."



## Share & win!

Share your love for your new Persimmon home and you could win a £100 IKEA voucher. There is one up for grabs every month. For inspiration, check out past winners' homes on our Instagram page @persimmon\_homes

**#lovemypersimmonhome**

## The earlier you reserve, the greater the choice

We'll always try and accommodate the Finishing Touches you want, but they are build-stage dependent, so the earlier you reserve the better.

**[persimmonhomes.com/finishingtouches](https://persimmonhomes.com/finishingtouches)**

Finishing Touches are subject to availability and stage of construction. Prices for your specific home type will be in our price list. For a full list of Finishing Touches available for your home, please contact the sales advisor on site.



All about community

## Proud to be building communities

When creating Hakewill Mews, not only did we create a lovely local environment for you and your family, we also contributed to the wider community.

Throughout the development process, we proactively engage with local communities and work closely with planning authorities. Hakewill Mews has achieved the right balance of homes and open space and the right mix of house types for a thriving community.

We also include much-needed homes for our Housing Association partners. Our plan enhances local facilities too, providing investment in local infrastructure such as transport, education, retail and recreation facilities, as well as initiatives to generate biodiversity.



“We’ve actively enhanced biodiversity at Hakewill Mews.”



### EDUCATION

Contribution of £577,000 towards local education.

### HOUSING

Affordable and extra care housing provision.

### TRAVEL

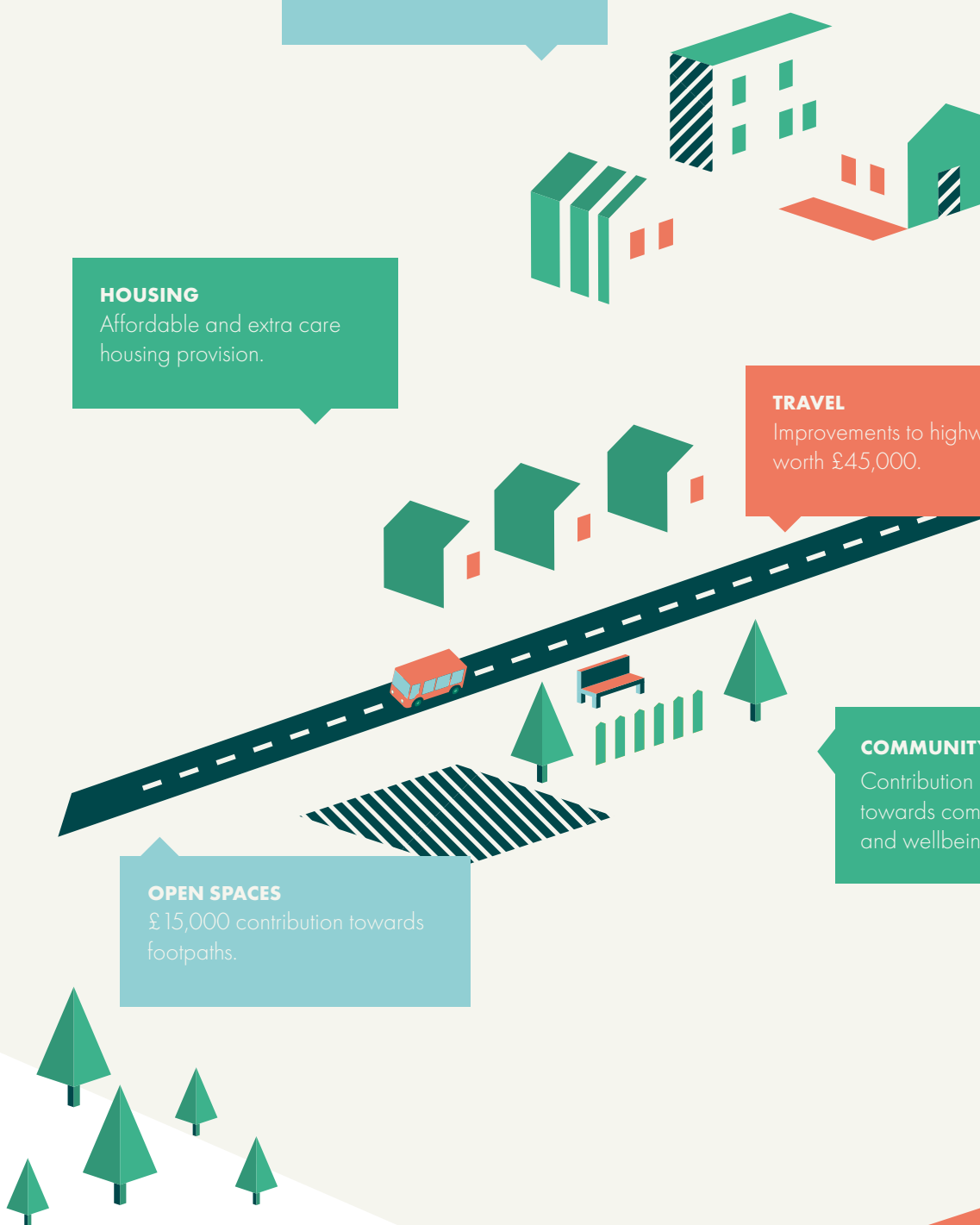
Improvements to highways worth £45,000.

### COMMUNITY SPACES

Contribution of £89,000 towards community sport and wellbeing facilities.

### OPEN SPACES

£15,000 contribution towards footpaths.



## Eco Range homes

New build homes are changing, and together, we're embracing the future. Recent updates to the Government's Part L building regulations mean from June 2023 our new Persimmon Eco Range homes will have a reduction of 31% in carbon emissions. This means a warmer, more energy-efficient home for you and the really cosy feeling of knowing it's better for the environment.

This means... **a saving of up to £6,730\*** over the lifetime of a 25 year mortgage.



## 31 % reduction in carbon emissions

**A more thermally-efficient ground floor** will mean you'll benefit from the additional insulation we're incorporating in the floor construction.

**More thermally-efficient walls** mean less heat escaping, so you aren't as dependent on central heating, and whatever heat is generated is kept in your home.

**Our panelised offsite-manufactured timber** frame technology uses a unique, sustainable panel system which adds to the thermal efficiency of your home. \*NB: not all homes will be built using timber frame technology.

**Energy-efficient air source heat pumps** use the latest technology to warm your already well-insulated home. The controls allow you to optimise your energy saving whilst keeping you comfortable.

**Enhanced loft insulation** is a huge cosy blanket that slows down the transfer of heat between your home and the outside world. It not only warms your home in the winter but keeps it cooler in the summer.

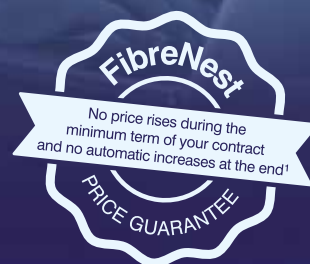
**EV charging** is a handy addition if you have an electric car, as you can charge it from the comfort of your own home. NB: Not all homes will have EV chargers as they're site and plot dependent. They can be added from our Finishing Touches range.

\*When compared to a Victorian-built equivalent, savings could be up to £31,640. The £6,730 saving is in comparison to a Persimmon home built to current building regulations (2013).<sup>†</sup>NB: not all homes will be built using timber frame technology. <sup>^</sup>NB: Not all homes will have EV Chargers, but they can be added from our Finishing Touches range. \*Whilst the heat pump is extremely efficient, purchasers should take into account the price of energy when considering any cost savings.





Your home, better connected  
for a brighter future



# Ultrafast 500Mb broadband is available on this development.

FibreNest provides you with high-speed, totally unlimited  
full-fibre broadband to your home, at great prices.



## Choose the best package for you

We know every household is different, that's why we've put together six amazing packages to suit everyone's needs. From surfing the net on the sofa to binge-watching the latest box set, streaming music with friends to ruling the galaxy in the latest must-have game - we've got the service for you.



Scan me!  
For packages & pricing.



0333 234 2220



support@fibrenewest.com

### Get connected today!

To sign up you will need your Unique Customer Reference.  
Please ask your sales advisor for this:

C:

D:

P:



Persimmon

# Notes

Notes section with horizontal dotted lines for writing.

