

CAMPBELL WHARF

MILTON KEYNES | MK9 4BN

The perfect place to live

1 & 2 bedroom Shared Ownership homes

in the heart of Milton Keynes



Sales & Marketing brand
domovohomes.co.uk



A development by
bpha.org.uk



**enjoy the
very best of**

WATERFRONT



CGI - Guide only

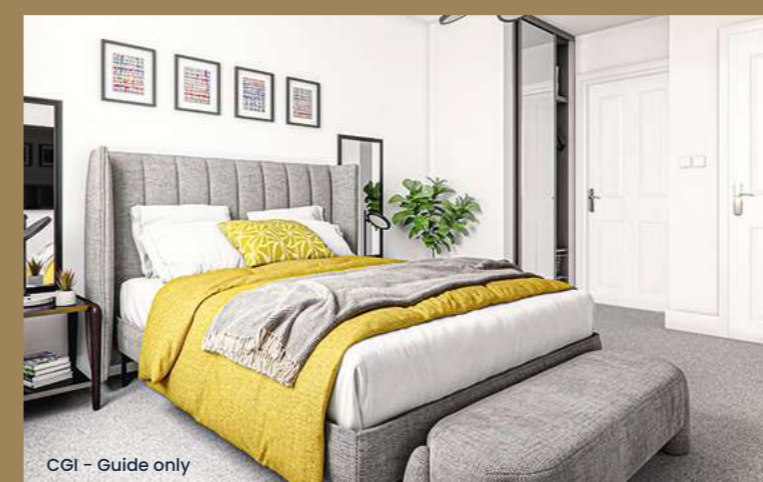


**1 & 2 bedroom Shared
Ownership homes in the
heart of Milton Keynes**

Discover landmark living

Campbell Wharf is an exciting new collection of homes situated on the banks of the Grand Union canal in one of Milton Keynes' most sought-after locations.

Spacious, open-plan living areas, beautifully appointed bedrooms and sleek, modern bathrooms make homes at Campbell Wharf the epitome of urban living. Every property features high specification appliances, fittings and finishes.



**go with the
flow in an**

ENVIABLE LOCATION

A great place to call home

Whether you love to be by the water, catch up over a coffee, enjoy the great outdoors or shop until you drop, life at Campbell Wharf will open up worlds of opportunity.

The historic Grand Union Canal frames the development to form something of a natural boundary. Residents can enjoy the calm waters and fantastic Trek bike store and a café, before crossing over a new footbridge linking the two sides of the canal, leading to a 111-berth Marina and The Warbler on the Wharf pub – a brand new hub and destination for you to socialise.

With a wealth of cultural, leisure, shopping and employment opportunities, as well as beautiful countryside on the doorstep, Milton Keynes has it all.



Photographer: Gill Prince
Brewer: McMullen & Sons Ltd



**designed
to keep you**

WELL CONNECTED



Explore all the capital has to offer with London Euston just 32 minutes away*



A new destination, providing exceptional new homes in a convenient location

Campbell Wharf is set to be the most sought-after destination to live in the heart of Milton Keynes.

The development boasts an enviable position and is perfectly placed to access the very best of what the capital has to offer. The beating pulse of central London is only a short trip from Milton Keynes Central station or via the M1, making life at Campbell Wharf ideal for commuting, nights out and day trips with family and friends.



*Travel times sourced from trainline.co.uk based on fastest time (Avanti West Coast)

DEVELOPMENT SITE PLAN



BLOCK 1 – SHARED OWNERSHIP
PLOTS 58-75
1 & 2 bedroom apartments

BLOCK 3 – SHARED OWNERSHIP
PLOTS 94-96, 150-155, 173-212
1, 2 & 3 bedroom apartments

BLOCK 4 – SHARED OWNERSHIP
PLOTS 223-238
1, 2 & 3 bedroom apartments

BLOCK 5 – SHARED OWNERSHIP
PLOTS 318-320, 325, 327-332, 376, 377 & 382
1 & 2 bedroom apartments

Private rent

Developer outright sales

S/S Sub station

Disclaimer: Whilst we endeavour to make our property details accurate and reliable these particulars are set out as a general outline only for guidance of intended purchasers or lessees and do not constitute as a full or part offer or contract. Other details are given without responsibility and intending purchasers or tenants should not only rely on them as statements or representations of fact but must satisfy themselves by inspection or otherwise as to the correctness of them. The purchaser is advised to obtain verification from their Solicitor or Surveyor to their own satisfaction.

Block 5 apartment locator

basement floor



ground floor



One bedroom apartments

Two bedroom apartments

Bpha affordable rent

1 BED APARTMENT
Plots 321, 323, 324 & 326

2 BED APARTMENT
Plot 322

Private sale

Stairs

Lift

R/S Refuse Store

C/S Cycle Store

Block 5 apartment locator

first floor



second floor



- One bedroom apartments

- Two bedroom apartments

- Bpha affordable rent

- Private sale

- Stairs

- Lift

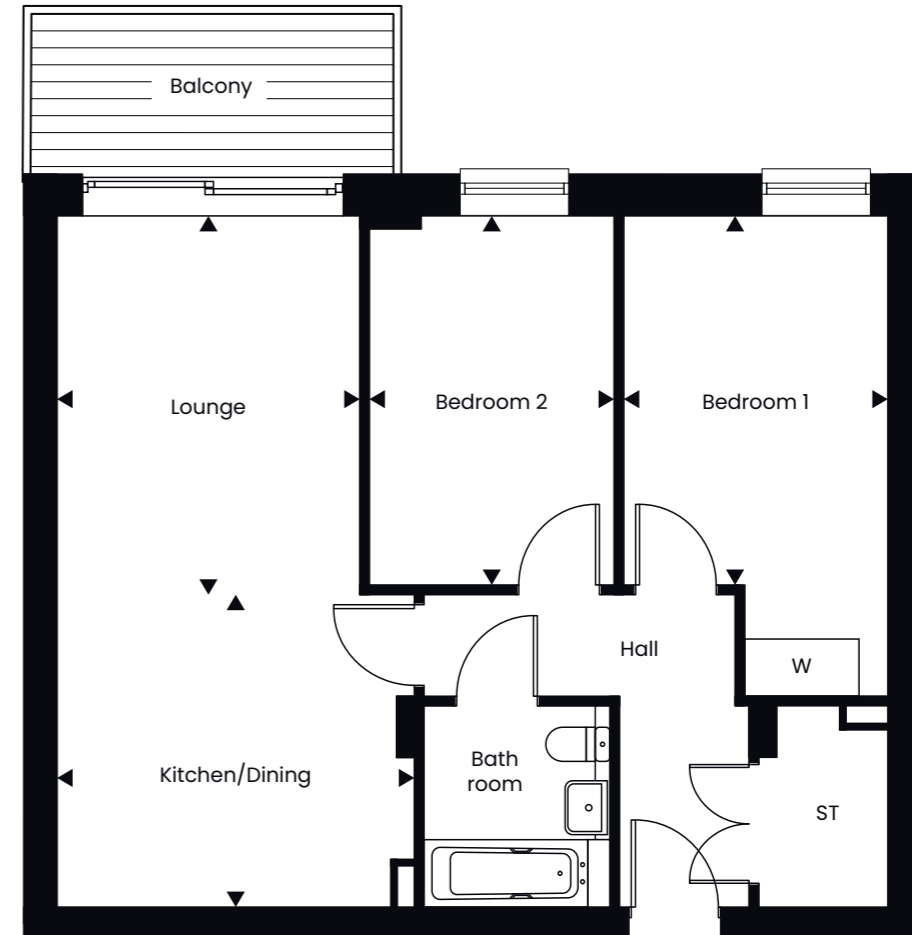
- R/S Refuse Store

- C/S Cycle Store

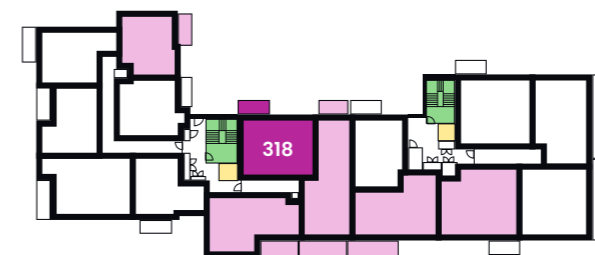
FLOORPLAN

FIRST FLOOR

two bedroom apartment



plot 318



First floor

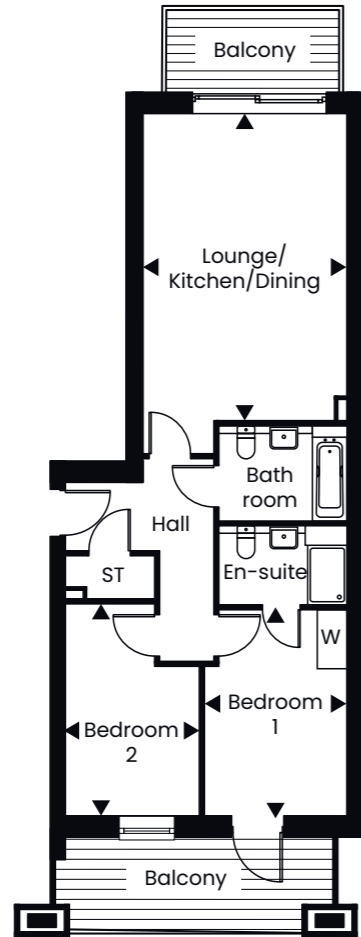
Lounge	3.95m x 3.17m	12'11" x 10'04"
Kitchen/Dining*	3.77m x 3.27m	12'04" x 10'08"
Bedroom 1	3.83m x 2.75m	12'06" x 9'00"
Bedroom 2*	3.84m x 2.56m	12'07" x 8'04"

* max measurement taken

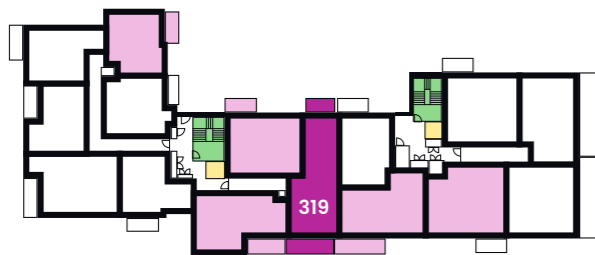
FLOORPLAN

FIRST FLOOR

two bedroom apartment



plot 319

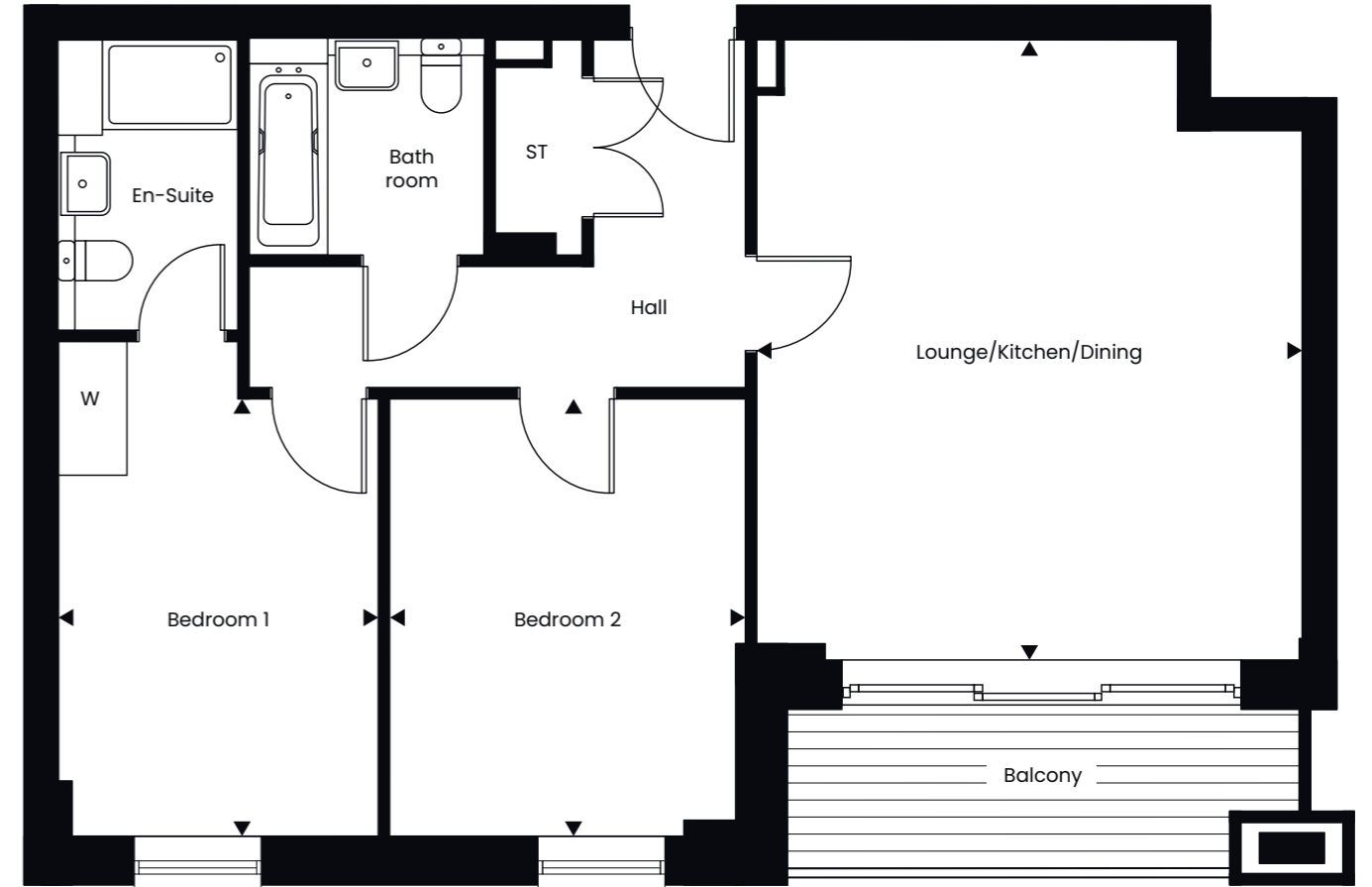


First floor

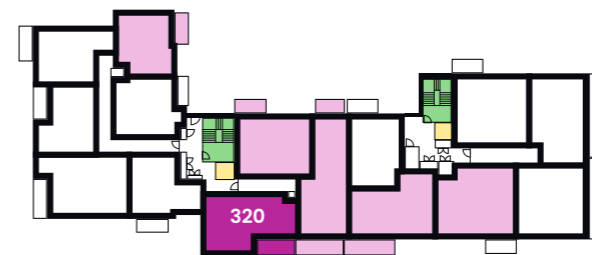
Lounge/Kitchen /Dining	6.25m x 4.15m	20'06" x 13'07"
Bedroom 1*	4.20m x 2.91m	13'09" x 9'06"
Bedroom 2*	4.32m x 2.80m	14'02" x 9'02"

* max measurement taken

two bedroom apartment



plot 320



First floor

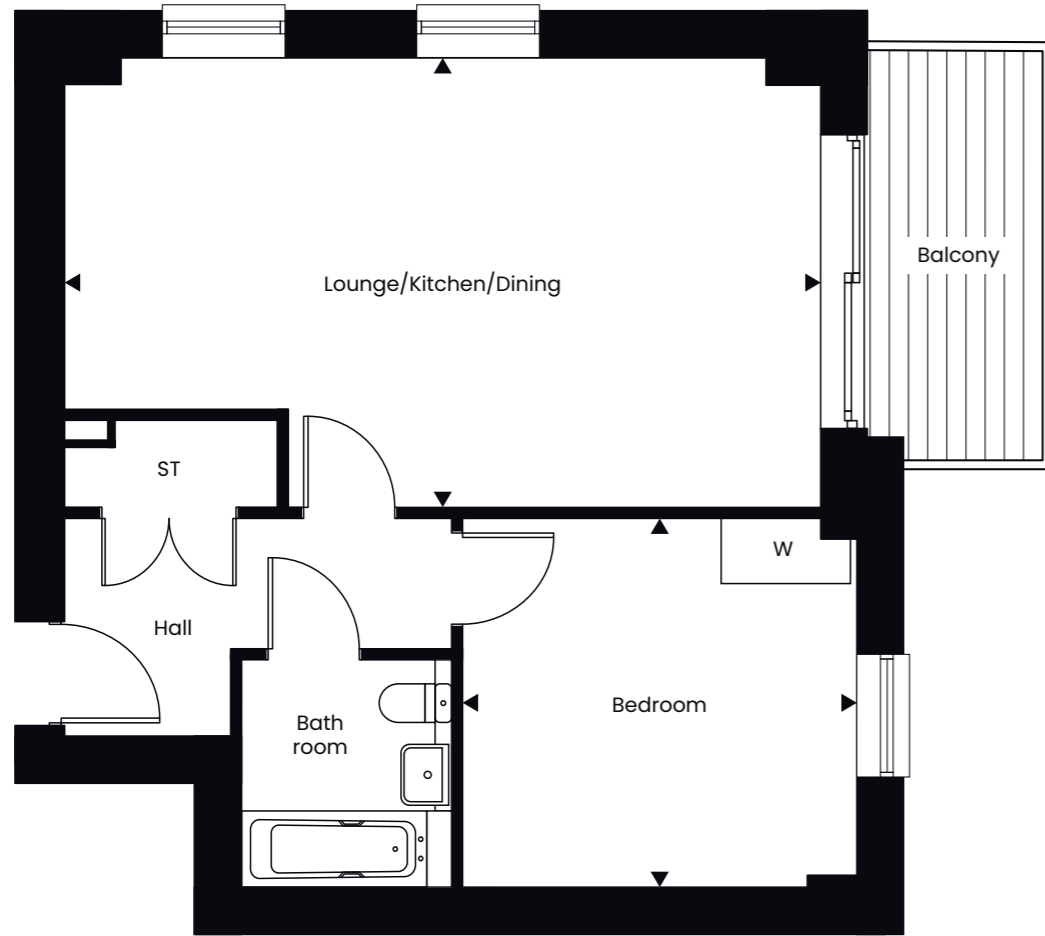
Lounge/Kitchen /Dining*	5.55m x 4.88m	18'02" x 16'00"
Bedroom 1	3.93m x 3.18m	12'10" x 10'05"
Bedroom 2*	3.92m x 2.86m	12'10" x 9'04"

* max measurement taken

FLOORPLAN

FIRST FLOOR

one bedroom apartment



plot 325

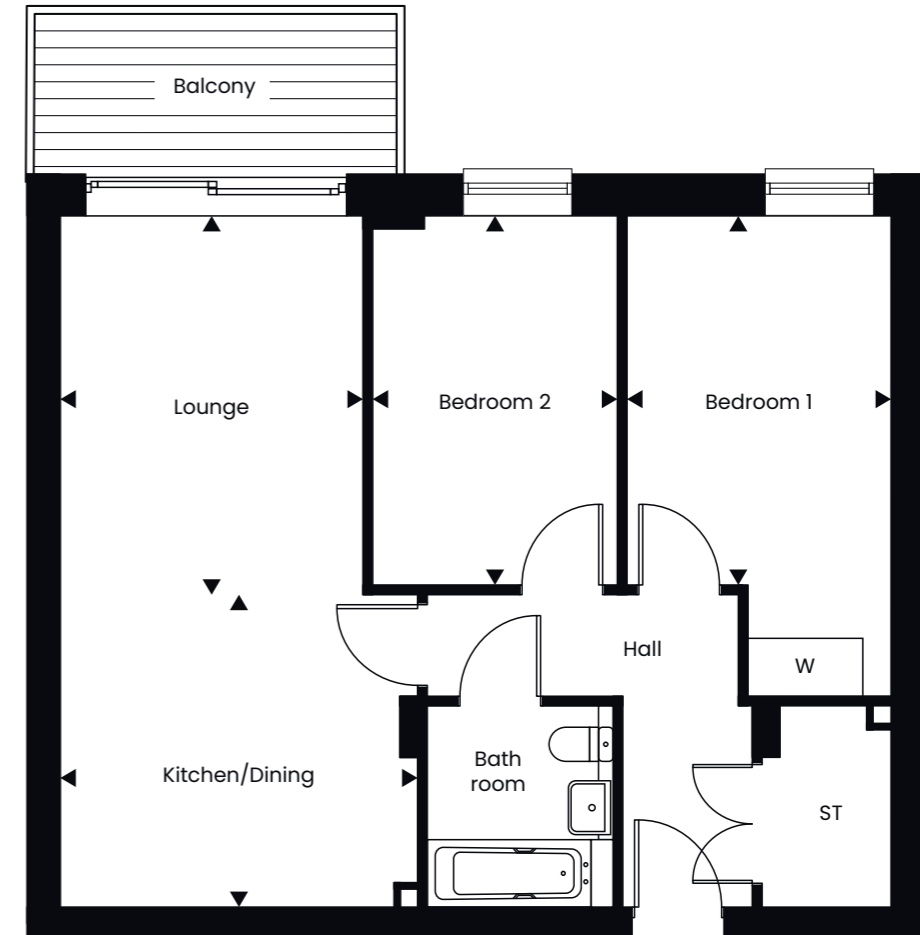


First floor

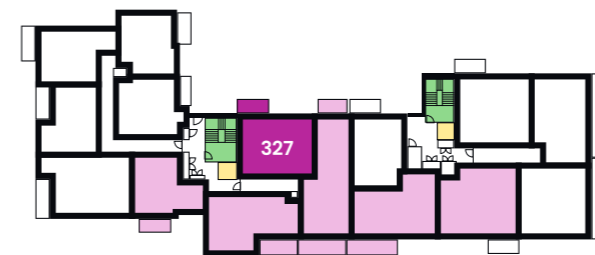
Lounge/Kitchen /Dining*	6.97m x 4.14m	22'10" x 13'06"
Bedroom*	3.64m x 3.42m	11'11" x 11'02"

* max measurement taken

two bedroom apartment



plot 327



First floor

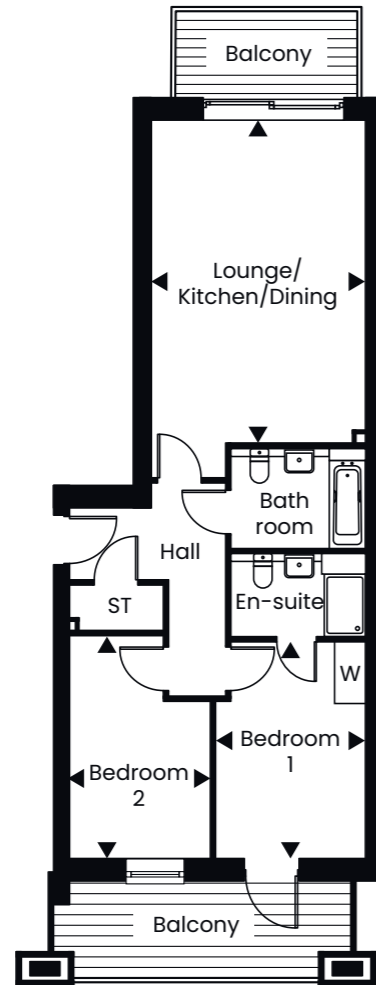
Lounge	3.95m x 3.17m	12'11" x 10'04"
Kitchen/Dining*	3.77m x 3.26m	12'04" x 10'08"
Bedroom 1	3.83m x 2.75m	12'06" x 9'00"
Bedroom 2*	3.84m x 2.56m	12'07" x 8'04"

* max measurement taken

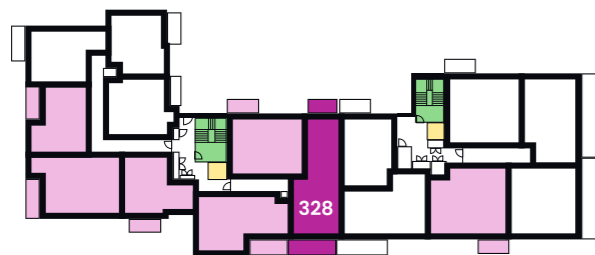
FLOORPLAN

SECOND FLOOR

two bedroom apartment



plot 328

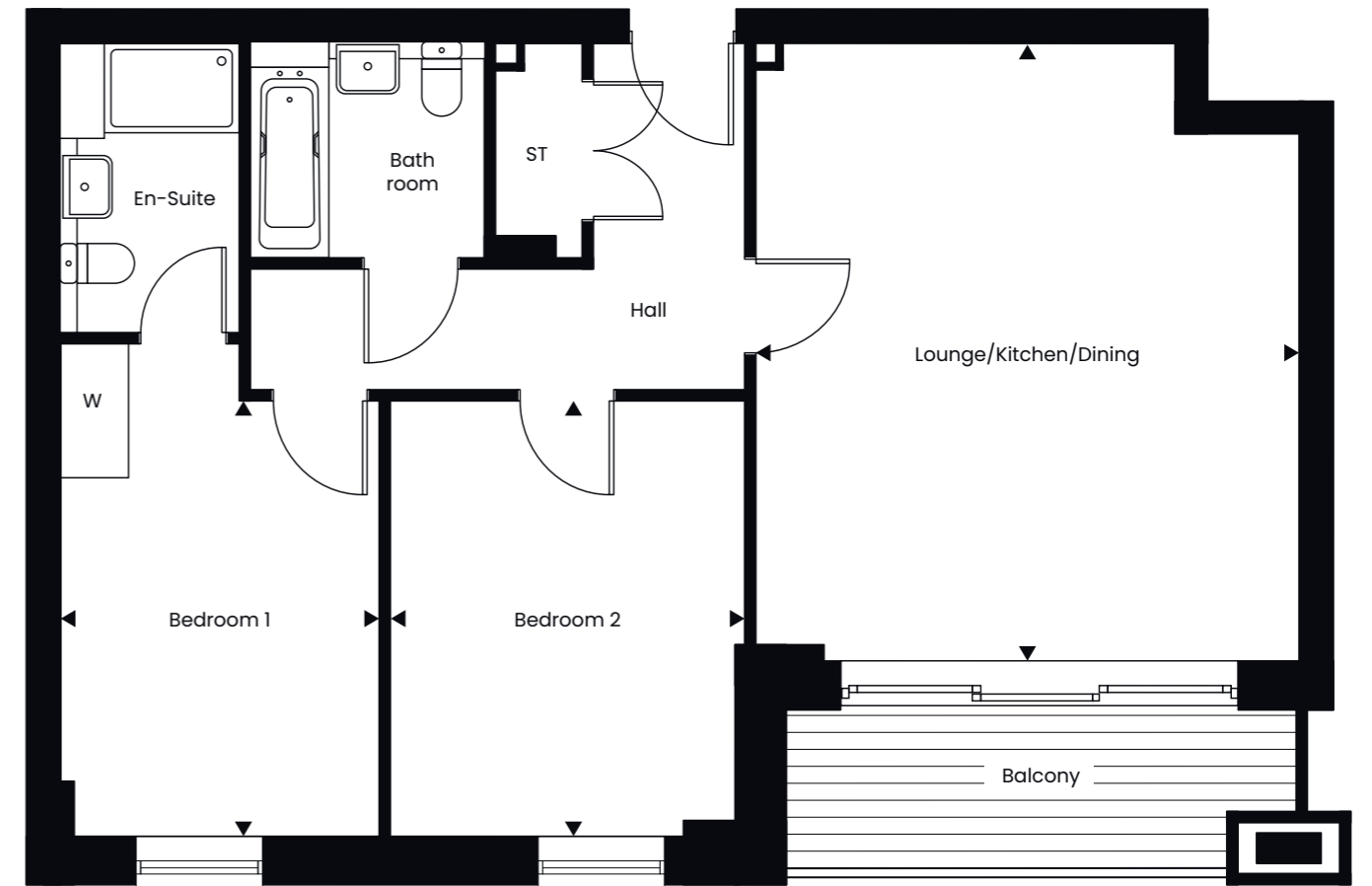


Second floor

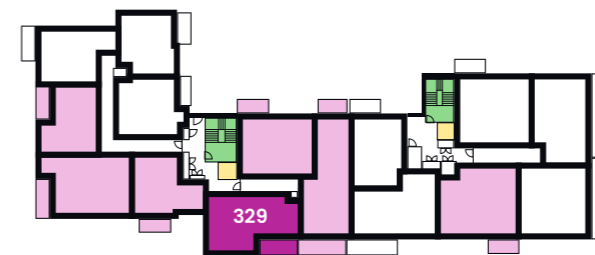
Lounge/Kitchen /Dining	6.24m x 4.15m	20'05" x 13'07"
Bedroom 1*	4.20m x 2.91m	13'09" x 9'06"
Bedroom 2*	4.32m x 2.80m	14'02" x 9'02"

* max measurement taken

two bedroom apartment



plot 329



Second floor

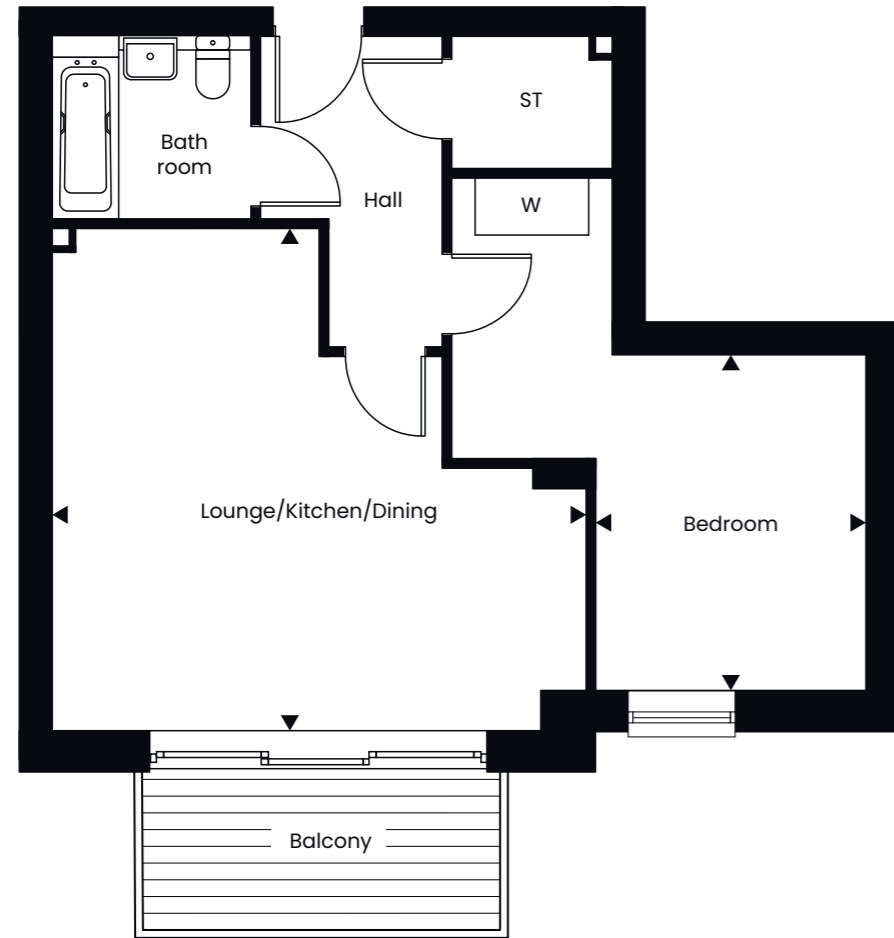
Lounge/Kitchen /Dining*	5.55m x 4.88m	18'02" x 16'00"
Bedroom 1	3.93m x 3.18m	12'10" x 10'05"
Bedroom 2*	3.92m x 2.86m	12'10" x 9'04"

* max measurement taken

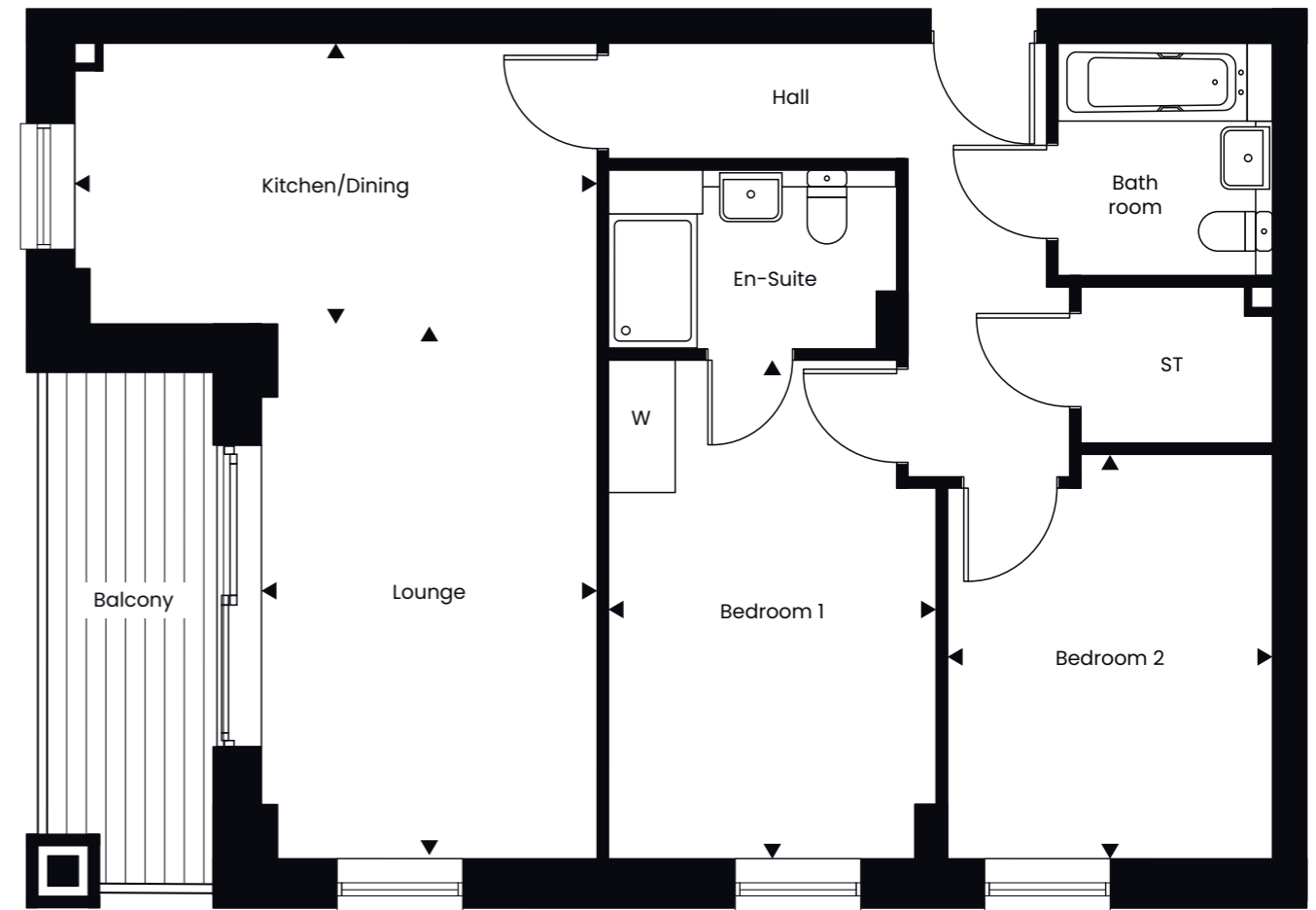
FLOORPLAN

SECOND FLOOR

one bedroom apartment



two bedroom apartment



plot 330

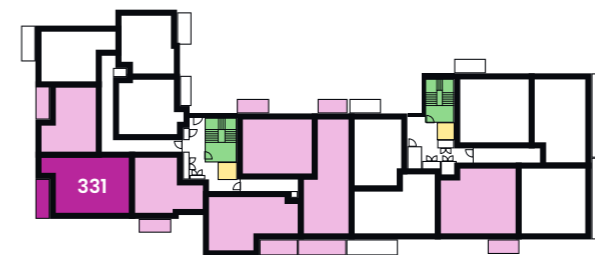


Second floor

Lounge/Kitchen/Dining*	5.65m x 5.34m	18'06" x 17'06"
Bedroom*	3.55m x 2.85m	11'07" x 9'04"

* max measurement taken

plot 331



Second floor

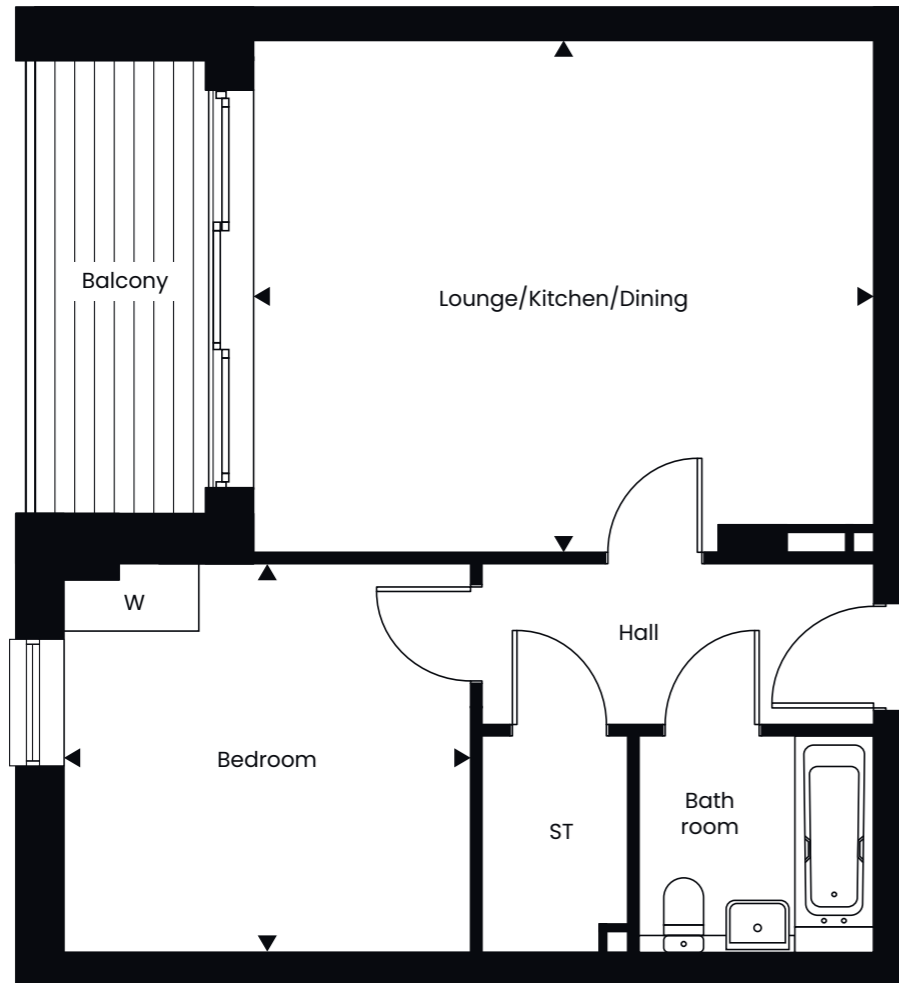
Lounge*	4.83m x 3.04m	15'10" x 9'11"
Kitchen/Dining*	4.73m x 2.55m	15'06" x 8'04"
Bedroom 1*	4.50m x 2.96m	14'09" x 9'08"
Bedroom 2*	3.66m x 2.94m	12'00" x 9'07"

* max measurement taken

FLOORPLAN

SECOND FLOOR

one bedroom apartment



plot 332

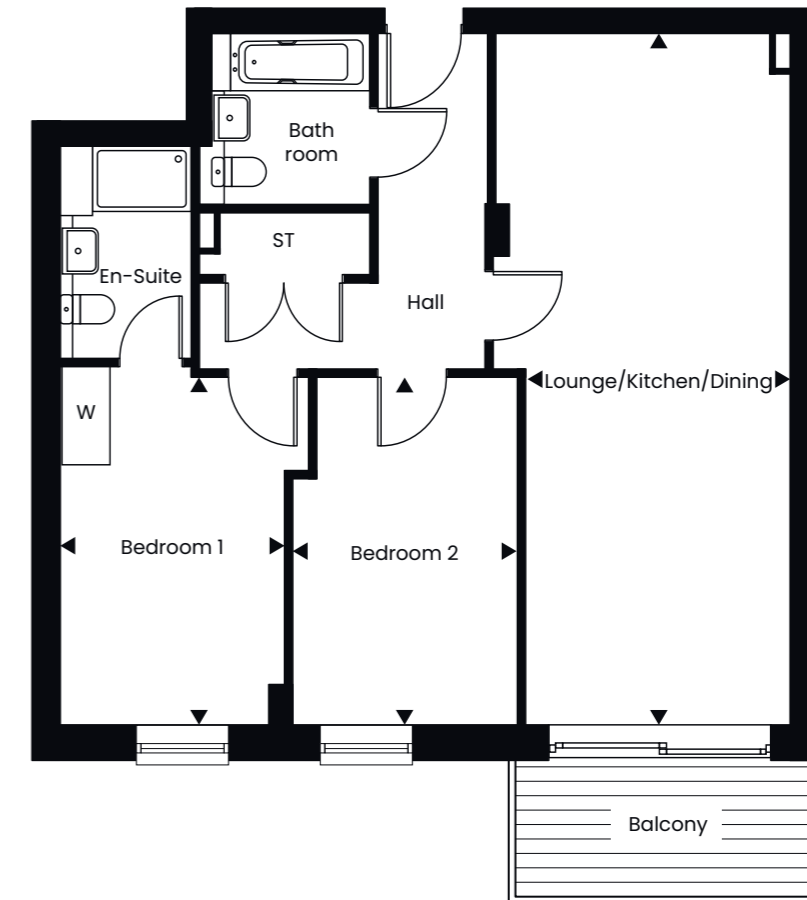


Second floor

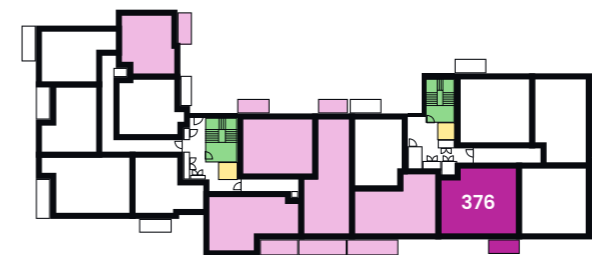
Lounge/Kitchen /Dining*	5.84m x 4.35m	19'01" x 14'03"
Bedroom*	3.64m x 3.46m	11'11" x 11'04"

* max measurement taken

two bedroom apartment



plot 376



Second floor

Lounge/Kitchen /Dining	8.49m x 3.25m	27'10" x 10'07"
Bedroom 1	4.26m x 2.76m	13'11" x 9'00"
Bedroom 2*	4.26m x 2.76m	13'11" x 9'00"

* max measurement taken

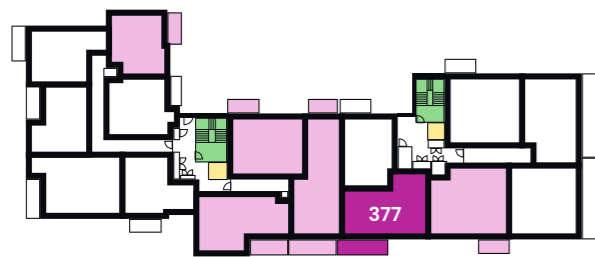
FLOORPLAN

FIRST FLOOR

two bedroom apartment



plot 377



First floor

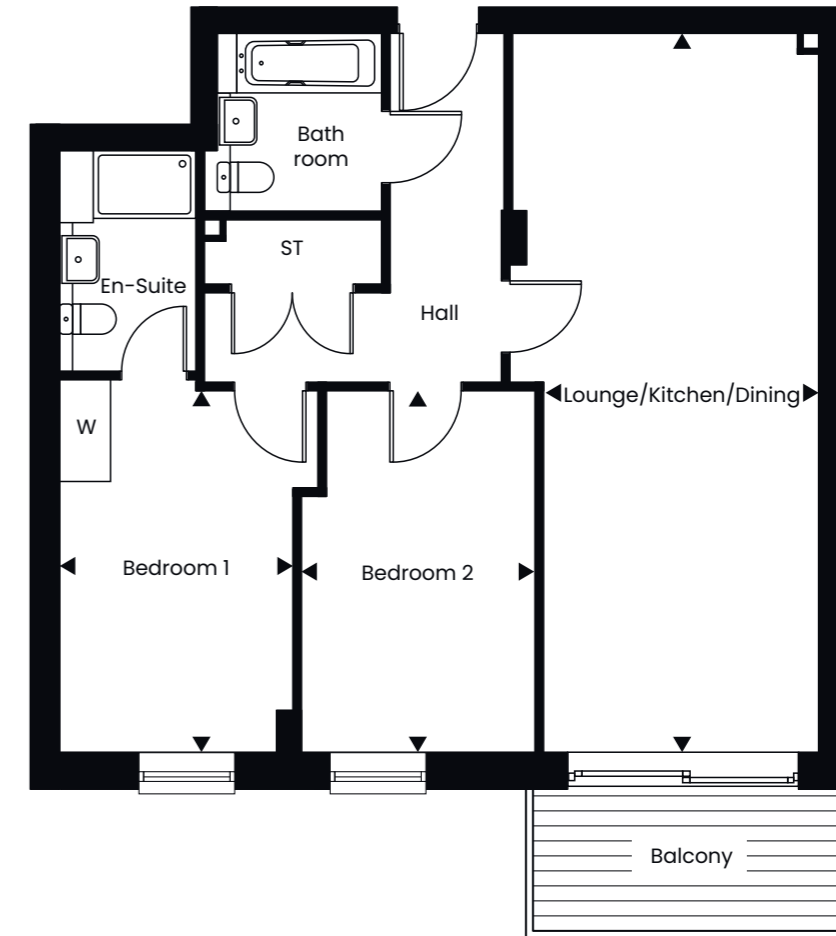
Lounge/Kitchen /Dining	5.80m x 4.68m	19'00" x 15'04"
Bedroom 1	3.09m x 2.96m	10'01" x 9'08"
Bedroom 2*	4.48m x 2.76m	14'08" x 9'00"

* max measurement taken

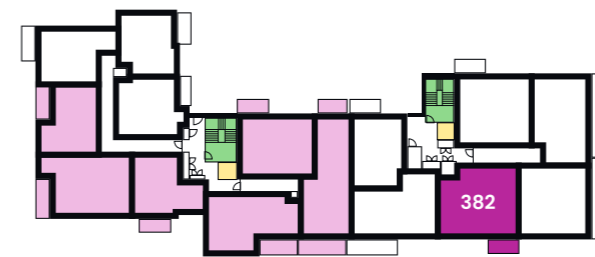
FLOORPLAN

SECOND FLOOR

two bedroom apartment



plot 382



Second floor

Lounge/Kitchen /Dining	8.49m x 3.25m	27'10" x 10'07"
Bedroom 1	4.26m x 2.76m	13'11" x 9'00"
Bedroom 2*	4.26m x 2.76m	13'11" x 9'00"

* max measurement taken

APARTMENT

SPECIFICATION



Kitchen

- Medford white kitchen cupboards
- Carbon steel worktop
- Built in oven, hob & chimney hood
- Fridge freezer & washer dryer provided
- Vinyl flooring

Bathroom

- Vinyl flooring
- Shower screen
- Tiled walls to wet areas of the bathroom
- Thermostatic shower
- Ensuite to bedroom 1 (selected plots only)

General

- Carpets provided
- Electric heating
- One car parking space per plot
- Balcony

The option you never knew existed... SHARED OWNERSHIP

Shared Ownership enables you to buy an initial share of a property and pay a subsidised rent to bpha on the rest, meaning you can get into home ownership in manageable stages and don't take on more of a financial commitment than you can afford.

Initial shares of between 25% and 75%* of our properties are available, you will pay a subsidised rent to bpha on the remaining share. In the future you can purchase further shares in your home**, or sell your share and move on.



Buy a share of the property, between 25%-75%

Pay rent on the share you don't own

One bedroom apartment

Property value £210,000***
40% share - £84,000
Monthly rent - £288.75
Monthly service charge - £175.30
(Based on plot 325)

Two bedroom apartment

Property value £310,000***
40% share - £124,000
Monthly rent - £426.25
Monthly service charge - £218.12
(Based on plot 328)

I finally have a place to call my own

Philip had been trying to get on the property ladder for seven years, and was feeling very disheartened after several potential properties fell through for various reasons.

Finally, Philip came across Domovo on social media, and subsequently the brand new Wavendon Green development, situated in a village just outside of Milton Keynes.



“Domovo were marvellous, I am so grateful for everything they have done for me, and I finally have a place to call my own.”

What are the next steps?

Give us a call and we'll take some details to make sure we have all the information we need.
If you've chosen your home and you're happy with everything, we'll get things moving.

About the developer

The Shared Ownership homes for sale at Campbell Wharf are owned by bpha. bpha are a leading provider and developer of affordable homes for Shared Ownership. Founded in 1990, they are a non-profit making housing association that manages more than 18,000 homes.

All the money they make is used to invest in existing homes, to enable them to build new homes, and to deliver new and improved services.

CAMPBELL WHARF

MILTON KEYNES | MK9 4BN

The perfect place to live

01908 088030

sales@domovohomes.co.uk

domovohomes.co.uk

Sales & Marketing brand
domovohomes.co.uk



A development by
bpha.org.uk



Disclaimer: Whilst we endeavour to make our property details accurate and reliable, these particulars are set out as a general outline only for the guidance of intended purchasers or lessees and do not constitute as a full or part offer or contract. Other details are given without responsibility and intending purchasers or tenants should not rely on them as statements or representations of fact but must satisfy themselves by inspection or otherwise as to the correctness of them. The purchaser is advised to obtain verification from their Solicitor or Surveyor to their own satisfaction.