

## Palace Road, Bromley, BR1

Guide Price £535,000

🛏 2 🚿 2 🛋 2



Sold By Reids Property.

Guide Price: £535,000 - £560,000.

Bromley Old Town / Two Bathrooms / Off Road Parking / Excellent Condition Throughout!

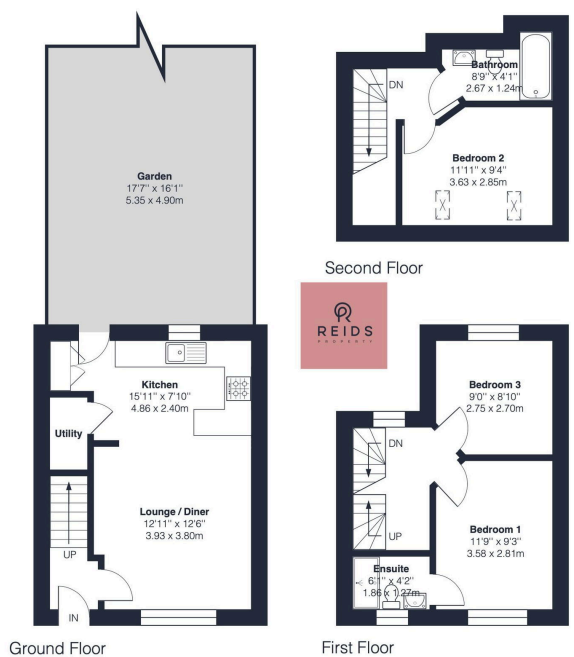
This truly stunning two/three double bedroom, modern cottage style house in Bromley's sought after Old Town area within easy reach of excellent transport links and local amenities.

- Sold By Reids Property
- Train Station 0.2 Mile
- Brick Fronted Façade
- Bromley Town Centre 0.5 Mile
- Water Resistant Flooring Downstairs
- Central Bromley Location
- Off Street Parking
- Sash Style Double Glazed Windows
- Contemporary Open Plan Living
- Low Maintenance Rear Garden



Palace Road, BR1

Approximate Gross Internal Area = 845 sq ft / 78.5 sq m



This plan is for layout guidance only and not drawn to scale unless stated. Window and door openings are approximate. Whilst every care is taken in the preparation of this plan, we would advise interested parties to check all dimensions, shapes and compass bearings prior to making any decisions reliant upon them.  
By Homeoutlook.co.uk / Copyright 2025