





Stapleton Road, Orpington, BR6

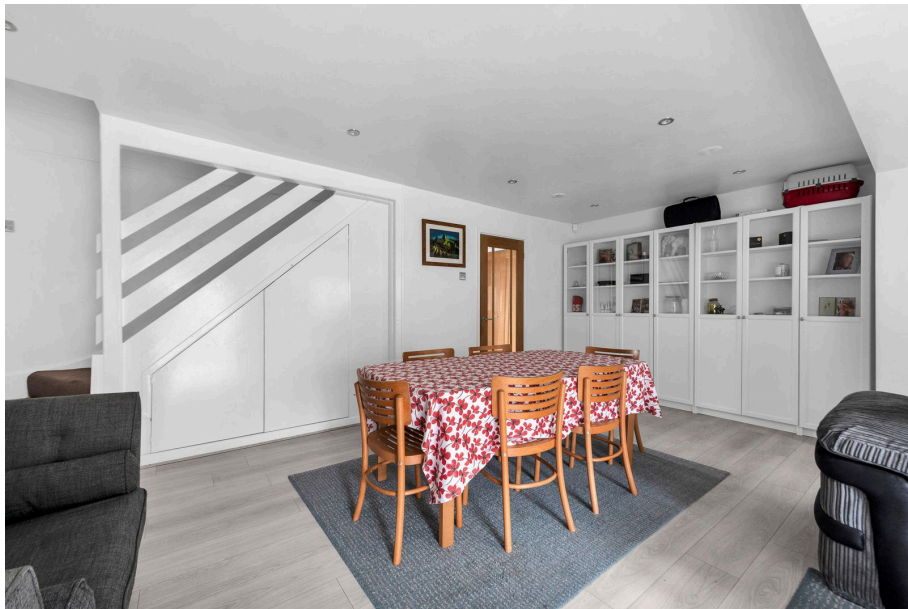
£650,000

3 1 1



- Detached Family Home
- Ground Floor Extension
- Further Extension Potential
- Detached Garage
- Orpington Station 0.8 Mile
- Local Shops 0.5 Mile
- Quartz Kitchen Work Tops
- Ample Off Road Parking
- Quiet Location
- Vast Extended Living Room





Three bedroom detached house with garage 0.8 mile to Orpington Train Station and within proximity of outstanding schools.

