



WINDLEBROOK
Estates

Hawker Drive, Addlestone, Surrey, KT15 2GU

£350,000

🛏 2 🍳 2 🛋 1



- Open Plan Living Space
- Two double bedrooms
- Separate office space
- Large balcony with wonderful views
- Two bathrooms, one an ensuite
- 5 minute walk to Addlestone station
- Walking distance to Addlestone town centre
- Immaculate condition throughout
- Close proximity to the M25, M4 and M3
- Lift Access

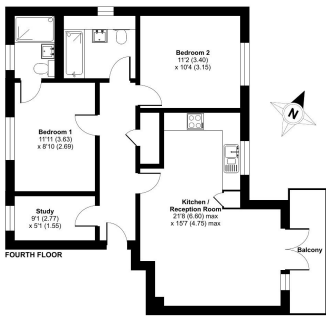


Introducing a stunning two-bedroom, two-bathroom apartment with a study and outdoor space, just moments from Addlestone train station and town center.

Step inside to a bright, open-plan living area, ideal for relaxation and entertaining. The spacious kitchen boasts sleek cabinetry and high-quality appliances, while the two double bedrooms are filled with natural light. The additional study provides a perfect workspace for remote work.


Enjoy easy access to local amenities, restaurants, parks, and excellent transport links. Whether commuting to London or exploring the beautiful Surrey countryside, this apartment is perfectly situated for modern living.

Hawker Drive, Addlestone, KT15
 Approximate Area = 755 sq ft / 70.1 sq m
 For identification only - Not to scale



© 2024 Windlebrook Estates. All rights reserved. This floor plan is for identification only and is not to scale. The actual dimensions of the property may vary slightly from those shown on the plan. Windlebrook Estates is a registered trademark of Windlebrook Estates Limited.



Energy Efficiency Rating		
	Current	Potential
Very energy efficient - lower running costs		
(92+) A		
(81-91) B	82	82
(69-80) C		
(55-68) D		
(39-54) E		
(21-38) F		
(1-20) G		
Not energy efficient - higher running costs		
England, Scotland & Wales		EU Directive 2002/91/EC 

WINDLEBROOK
Estates