



WINDLEBROOK  
*Estates*

Hawker Drive, Addlestone, Surrey, KT15 2GU

Offers In Region Of £360,000

🛏 2 🚿 2 🚗 1



- Top floor apartment
- Walking distance to Addlestone town centre
- Separate office space
- Two double bedrooms
- Close proximity to the M25, M4 and M3
- 5 minute walk to Addlestone station
- Two bathrooms, one an ensuite
- Large balcony with wonderful views
- Immaculate condition throughout





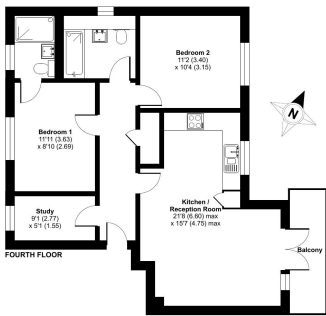
Introducing a stunning two-bedroom, two-bathroom apartment with a study and large balcony, just moments from Addlestone train station and town center.

Step inside to a bright, open-plan living area, ideal for relaxation and entertaining. The spacious kitchen boasts sleek cabinetry and high-quality appliances, while the two double bedrooms are filled with natural light. The additional study provides a perfect workspace for remote work.

Enjoy easy access to local amenities, restaurants, parks, and excellent transport links into London



Hawker Drive, Addlestone, KT15  
Approximate Area = 755 sq ft / 70.1 sq m  
For identification only - Not to scale



1. Data also produced in accordance with RICS Property Measurement 2nd Edition.  
Complying International Property Measurement Standards (IPMS) (November 2018).  
Produced by Windlebrook Estates, 1927, 10/2020

Energy Efficiency Rating		
	Current	Potential
Very energy efficient - lower running costs		
(92+) <b>A</b>		
(81-91) <b>B</b>	82	82
(69-80) <b>C</b>		
(55-68) <b>D</b>		
(39-54) <b>E</b>		
(21-38) <b>F</b>		
(1-20) <b>G</b>		
Not energy efficient - higher running costs		
England, Scotland & Wales		EU Directive 2002/91/EC

WINDLEBROOK  
Estates