



3 Bedroom Riverside Apartment Kingston Riverside, Kingston upon Thames £1,350,000 Leasehold

Located within the iconic Kingston Riverside Apartment, a beautifully presented 3 bedroom, 3 Bathroom luxury riverside apartment. Offering stunning far-reaching views over the river Thames and Canbury Gardens, this exceptionally spacious apartment is located on the 6th floor of the Admiralty Building, and boasts approximately 1,235 sqft of internal living space, and extensive private external space, including a terrace and further balcony.

Featuring an open plan living/dining room with a high specification kitchen, with access to the private west facing terrace. This exceptional property also benefits from air conditioning to the living room/kitchen/dining area and the principal bedroom. Both the principal bedroom and second bedroom both offer access to a private balcony, have en-suite shower rooms and fitted wardrobes.

Further third bedroom, all bedrooms offer a stunning outlook over the landscaped internal gardens of Kingston Riverside and far-reaching views over the Thames and Canbury Gardens.

There is a further luxury bathroom located off the entrance hallway a spacious storage cupboard and underfloor heating. Residents at Kingston Riverside benefit from concierge service, lift service, residents roof garden and communal garden.

Secure underground parking available to lease separately.

This apartment was completed in 2014 and has the remainder of a 999 year lease

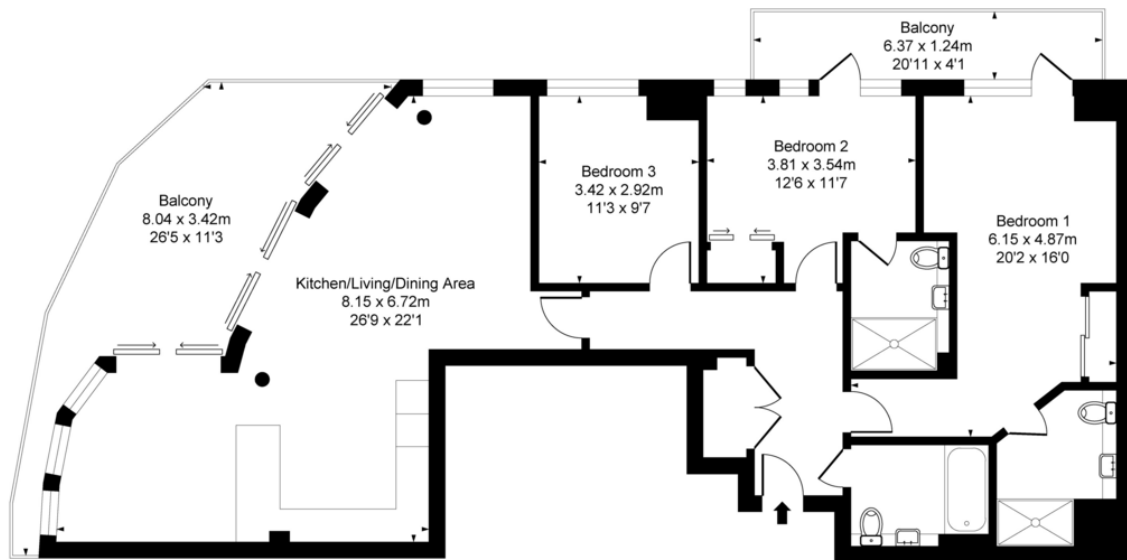
WWW.STACKANDBONNER.COM

020 8547 1234

sales@stackandbonner.com



Admiralty Building Kingston
Riverside Kingston KT2
Approximate Gross Internal Area
114.77 sq m / 1235 sq ft
(CH = Ceiling Heights)



Sixth Floor

This plan is not to scale. It is for guidance and not for valuation purposes.
All measurements and areas are approximate only, and have been prepared in accordance with the current edition of the RICS Code of Measuring Practice.

- 3 Bedroom Riverside Apartment
- 3 Luxury Bathrooms
- Open Plan Living/Kitchen/Dining Room
- Private West Facing Riverside Terrace
- Further Private Balcony
- Luxury Fitted Kitchen
- 1,235 sq ft of internal living space
- 6TH Floor
- Air conditioning to the living room/kitchen/dining area, and the principal bedroom
- Concierge Service
- Residents Roof Garden and Internal Gardens
- Lift Service
- Service Charge: £8,859.48 per annum
- Ground Rent: £500 per annum fixed
- Lease: 988 years remaining
- Council Tax: Band G - £4,147.25 per annum