



3 Bedroom Luxury Riverside Apartment Charter Quay, Kingston upon Thames £995,000 Share of Freehold

With panoramic views of the River Thames, we are delighted to offer this spectacular 3 Bedroom Riverside Apartment, with 2 private terraces.

Located on the banks of the Thames, positioned on the 4th Floor, right at the front of Charter Quay, this amazing apartment is ideally situated in a prime location with uninterrupted views of the river Thames, and Home Park beyond.

Spacious living room with doors opening out to a private terrace. Doors open through to a modern well equipped eat in kitchen with a further private terrace

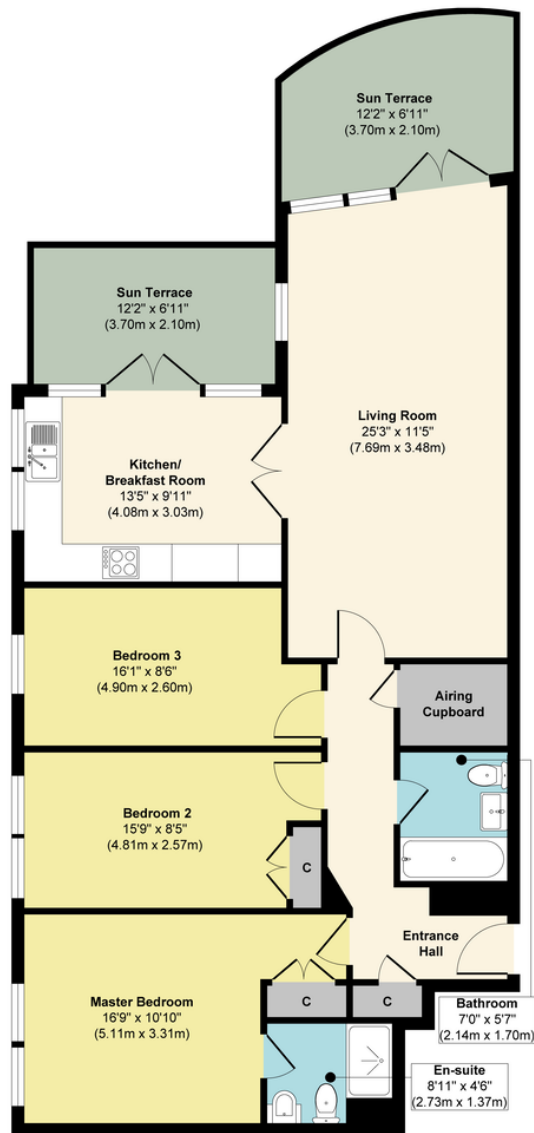
3 Bedrooms, all with river views, family bathroom, ensuite shower room and ample storage throughout.

The property benefits from an allocated secure underground parking space, 24hr concierge, residents' health suite,

Lift service, Residents Landscaped Garden and Residents Roof Terrace.

Please contact us today to arrange your appointment to view.





Floor Plan

Approx. Gross Internal Floor Area 1076 sq. ft / 100.00 sq. m

Illustration for identification purposes only, measurements are approximate, not to scale.
Produced by Elements Property

- 3 Bedroom Riverside Apartment
- 2 Private Terraces
- 4th Floor – 1,076 sq ft
- Panoramic Views of the River Thames
- Spacious Living Room
- Large Eat in Kitchen
- 3 Bedrooms
- 2 Luxury Bathrooms
- 24hr Concierge
- Underground Parking Space
- Residents Health Suite
- Share of Freehold
- Service Charge: £5,841.12 per annum
- Council Tax: Band G - £3,744.52