

# S&B



## **2 Bedroom Stunning Riverside Apartment Charter Quay, Kingston upon Thames £600,000 Share of Freehold**

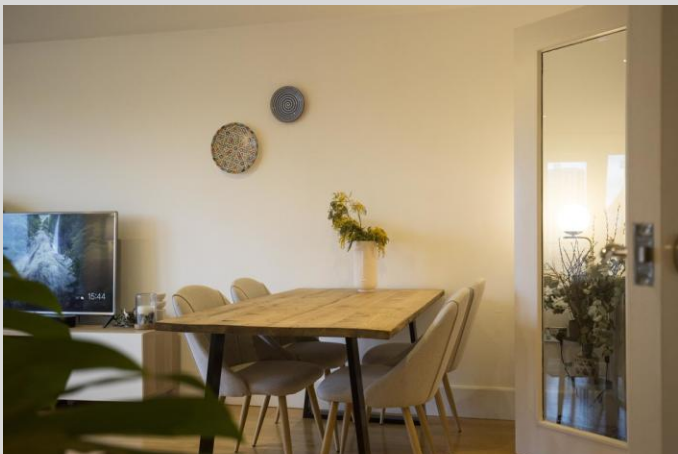
2 Bedroom executive apartment, located within the highly regarded Charter Quay Riverside Development. Situated within Garricks House, this exceptional apartment offers far reaching views of the River Thames and beyond from its 7th floor private balcony. Immaculately presented with a spacious living room, with doors opening to the high specification kitchen with granite worktops and fully fitted appliances. The principal bedroom boasts fitted wardrobes and an en suite shower room. Second Bedroom designed with fitted wardrobes and shelving unit. Further luxury bathroom and storage cupboard. Charter Quay Riverside Development has benefits including 24 hour concierge, secure underground parking, Residents landscaped roof garden and Residents Health Suite. Share of Freehold. Chain Free. Contact us today to arrange your appointment to view.

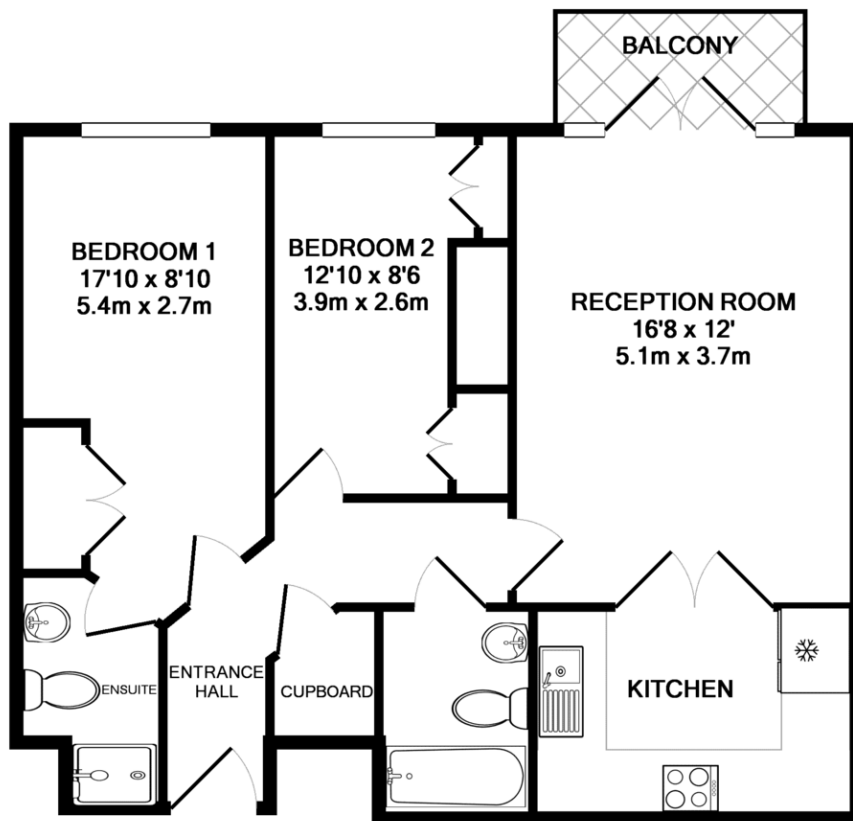
[WWW.STACKANDBONNER.COM](http://WWW.STACKANDBONNER.COM)

020 8974 8844

[kingston.sales@stackandbonner.com](mailto:kingston.sales@stackandbonner.com)







**GARRICKS HOUSE**  
**TOTAL APPROX. FLOOR AREA 68.4 SQ.M. (736 SQ.FT.)**

Whilst every attempt has been made to ensure the accuracy of the floor plan contained here, measurements of doors, windows, rooms and any other items are approximate and no responsibility is taken for any error, omission, or mis-statement. This plan is for illustrative purposes only and should be used as such by any prospective purchaser. The services, systems and appliances shown have not been tested and no guarantee as to their operability or efficiency can be given  
 Made with Metropix ©2009

- Charter Quay Riverside Development
- 2 Bedroom Apartment
- 7th Floor – 736 sq ft of internal living space
- Far Reaching Views of the River Thames
- Spacious Living/Dining Room
- Fully Fitted Kitchen
- 24hr Concierge
- Residents Health Suite
- Secure underground parking space
- Share of Freehold
- Service Charge £3,898.70 per annum plus a reserve fund contribution of £775.48 per annum
- Council Tax Band F - £3,245.24 per annum