

S&B



2 Bedroom Riverside Apartment Kingston Riverside, Kingston upon Thames OIEO £800,000 Leasehold

A beautiful 2 bedroom Riverside Apartment, in Kingston Riverside, Kingston upon Thames

Situated on 2nd floor, within the iconic Kingston Riverside Development, on the banks of the Thames, overlooking Canbury Gardens & the River Thames.

This spectacular apartment is located at the very front of Kingston Riverside, offering both southerly and westerly views, and a spacious full width private terrace.

The apartment features a spacious open plan living area, with a luxury kitchen and breakfast island, full range of integrated appliances, 2 bathrooms (one en-suite)

also benefits from comfort cooling to the main living area and principal bedroom.

Underfloor Heating, Concierge, Lift Service Residents Landscaped Internal Garden and Roof Garden.

Kingston Riverside is ideally positioned within walking distance of Kingston Town Centre, and mainline station with frequent trains to London Waterloo,

Offered to the market with no onward chain.

WWW.STACKANDBONNER.COM

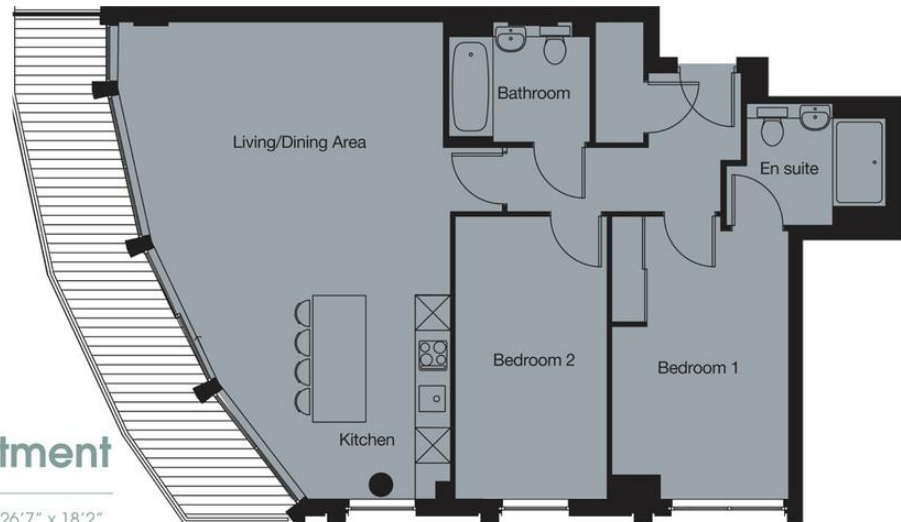
020 8547 1234

sales@stackandbonner.com



2 Bedroom Apartment

Living / Kitchen	8.11m x 5.52m	26'7" x 18'2"
Bed 1	4.81m x 3.00m	15'9" x 9'10"
Bed 2	4.81m x 2.52m	15'9" x 8'3"
Net Internal Area	85.10m ²	916ft ²
Balcony Area	13.92m ²	149ft ²



KINGSTON RIVERSIDE - Trafalgar Building



- 2 Double Bedrooms
- 2 Luxury Bathrooms (one en-suite)
- Open Plan Living Room/Kitchen/Dining Room
- Views Over Canbury Gardens and the River Thames
- Full Width Terrace with Westerly and Southerly views
- 916 sq ft of internal living space
- 2nd Floor
- Service Charge: £5,475.18 per annum
- Ground Rent: Zero
- Lease: 1,089 years from 2012
- Council Tax Band F - £3,594.29 per annum