



HAWKSGROVE

ESTATES

LETTINGS · SALES · MANAGEMENT · CONSTRUCTION

01707 876141/07590 370731

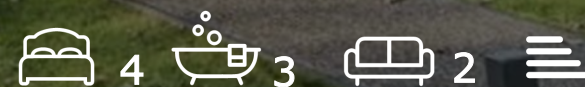
hello@hawksgrovestates.com

www.hawksgrovestates.com

[@hawksgrovestates](https://www.instagram.com/hawksgrovestates)



7 Lipton Close
, London, N14 5BF
£6,999



7 Lipton Close, London, N14 5BF

Available End of August 2024..

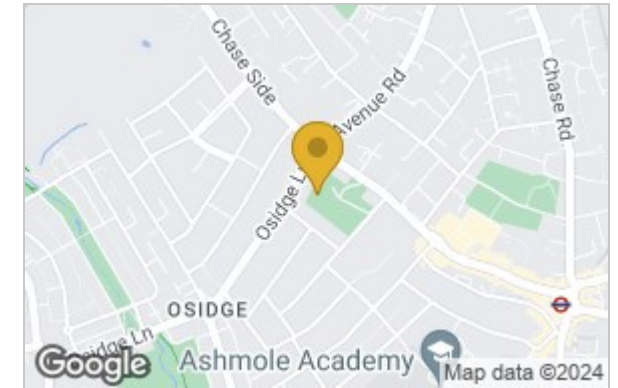
Located in the historic grounds of the Sir Thomas Lipton gated development is this newly built, end of terrace modern family home that is beautifully presented throughout and is fully furnished.

Set over three floors, the ground floor benefits from a kitchen, living/dining room and conservatory with access onto your private garden, utility room, guest cloakroom and coats cupboard. The first floor comprises of three bedrooms, one with en-suite and a family bathroom, whilst the second floor is home to the primary bedroom suite with en-suite bathroom and walk in wardrobe, with the additional benefit of a private terrace.

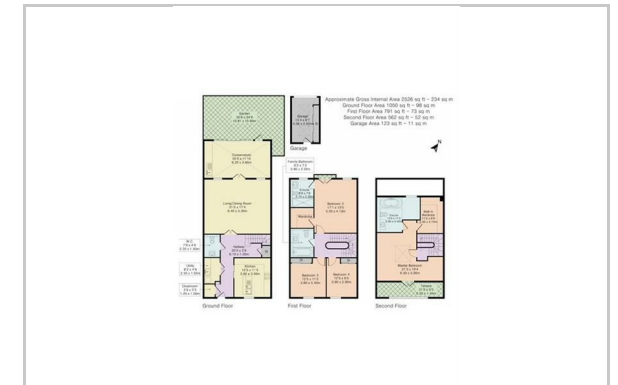
Externally, there is parking for 2 car as well as visiting spaces for guests.



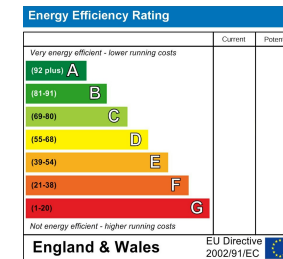
Area Map



Floor Plan



Energy Efficiency Graph



These particulars, whilst believed to be accurate are set out as a general outline only for guidance and do not constitute any part of an offer or contract. Intending purchasers should not rely on them as statements of representation of fact, but must satisfy themselves by inspection or otherwise as to their accuracy. No person in this firm's employment has the authority to make or give any representation or warranty in respect of the property.

5 orchard close cuffley, potters bar, EN6 4QD

Tel: 01707876141 Email: john@hawksgroveestates.com