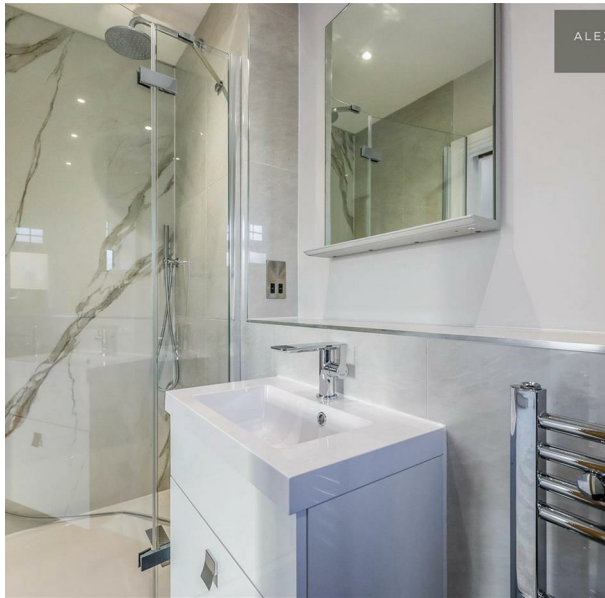


Chestnut House Grosvenor Place, Finchdean Road, Rowland's Castle, Hampshire,  
PO9 6DA  
Offers in excess of £1,050,000  
Council Tax Band

ALEXANDER MASON  
HOMES





Chestnut House is an exceptional 4-bedroom chalet bungalow, with two ground-floor bedrooms & three bathrooms over two floors. One of three exclusive properties in Grosvenor Place, a high-end collection of homes sitting on the edge of a beautiful countryside setting in Rowland's Castle.

ALEXANDER MASON  
H O M E S

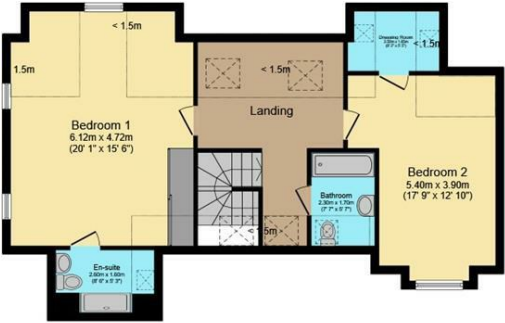
99 Bell Street  
Reigate  
Surrey  
RH2 7AN

01737 422 050

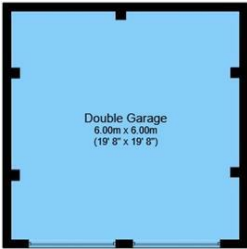
info@alexandermasonhomes.com



Ground Floor



First Floor



Garage

Total floor area 201.1 m<sup>2</sup> (2,165 sq.ft.) approx  
Restricted height areas 23.5 m<sup>2</sup> (253 sq.ft.)

This floor plan is for illustrative purposes only. It is not drawn to scale. Any measurements, floor areas (including any total floor area), openings and orientation are approximate. No details are guaranteed, they cannot be relied upon for any purpose and they do not form part of any agreement. No liability is taken for any error, omission or misstatement. A party must rely upon its own inspection(s). Powered by [www.focalagent.com](http://www.focalagent.com)

Energy Efficiency Rating		
	Current	Potential
Very energy efficient - lower running costs		
(92 plus) <b>A</b>		
(81-91) <b>B</b>		
(69-80) <b>C</b>		
(55-68) <b>D</b>		
(39-54) <b>E</b>		
(21-38) <b>F</b>		
(1-20) <b>G</b>		
Not energy efficient - higher running costs		
England & Wales		EU Directive 2002/91/EC