



# 1 Dragmore Street

, London, SW4 8DW

**£2,000 Per month**

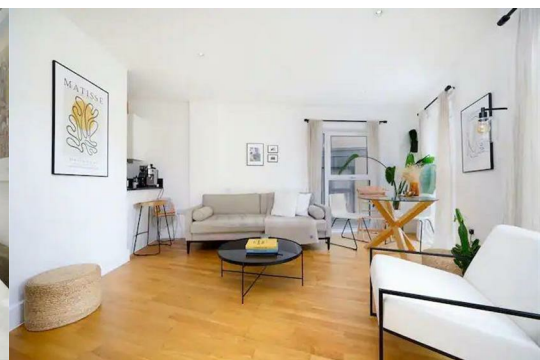


A well-presented two-bedroom, two-bathroom apartment located on Dragmore Street. The property is set within a modern, purpose-built block and includes a private balcony, two double bedrooms, an en-suite shower room, and a separate family bathroom.

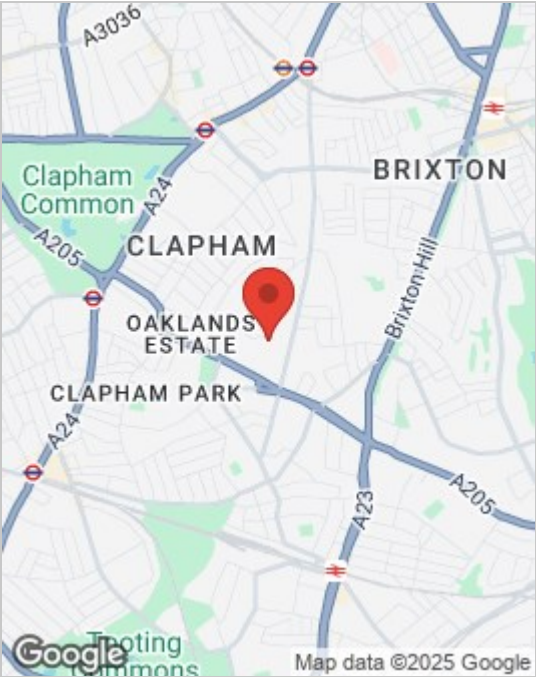
The layout features an open-plan kitchen and living space with integrated appliances and wooden flooring.

Located within walking distance of Clapham South underground station, and close to multiple bus routes providing easy access into central London

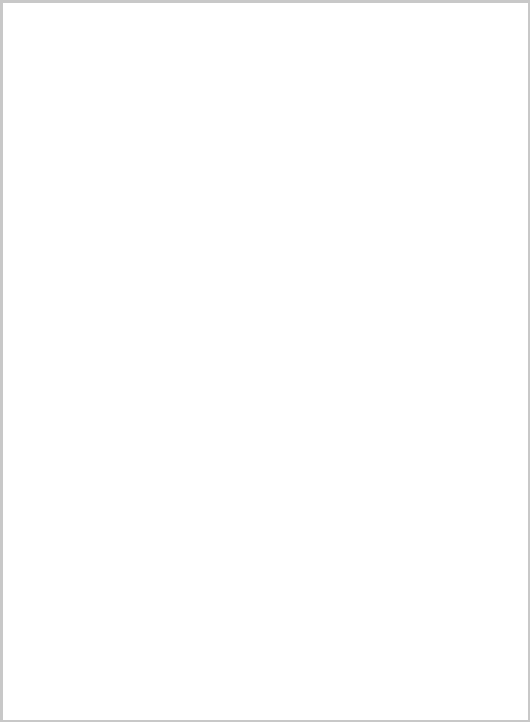
EPC - C  
Council Tax - Band D



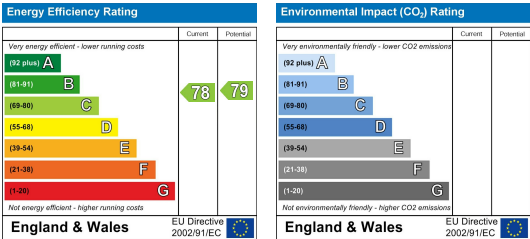
Area Map



Floor Plan



Energy Efficiency Graph



These particulars, whilst believed to be accurate are set out as a general outline only for guidance and do not constitute any part of an offer or contract. Intending purchasers should not rely on them as statements of representation of fact, but must satisfy themselves by inspection or otherwise as to their accuracy. No person in this firms employment has the authority to make or give any representation or warranty in respect of the property.