

chris hamriding

lettings & estate agents



15 Fieldfare Way, Sandbach, CW11 3TR

Offers Over £400,000

Take a moment to view our guided, aerial tour of this superb, modern home!

Enjoying a corner plot on the young 'Broadmeadow Park' development, this particular home was built to Latimer homes, 'Bramhall' Design. Offering over 1400 square feet of internal accommodation, the well-planned layout works well for modern family life, couple this with an excellent specification you would expect with Latimer Homes.

Accompanying the home are a number of features to note, some of which include: energy efficient double glazing and gas central heating, oak style internal doors and quality flooring throughout, a spacious lounge towards the rear of the home with French doors leading out to the rear garden, a formal dining room towards the front, a breakfast kitchen complete with a whole host of branded integrated appliances, quality tiled flooring and working surfaces. In addition, there is a handy utility space off the kitchen keeping the area nice and tidy plus a useful downstairs WC.

Upstairs, the spacious theme continues with high ceilings, a huge landing and four exceptional double bedrooms, with en-suite facilities to the master suite and a family bathroom with 'Villeroy & Boch' stylish sanitary ware.

Accommodation

Entrance Hall

Cloakroom 6'4" x 2'11" (1.94 x 0.91)

Kitchen 13'9" x 9'3" (4.20 x 2.83)

Utility 9'3" x 6'2" (2.84 x 1.89)

Dining Room 15'7" x 9'1" (4.75 x 2.78)

Living Room 22'7" x 12'11" (6.90 x 3.96)

First Floor Landing

Bedroom One 16'7" x 10'11" (5.08 x 3.35)

En-suite 8'3" x 3'6" (2.54 x 1.09)

Bedroom Two 13'0" x 11'3" (3.97 x 3.43)

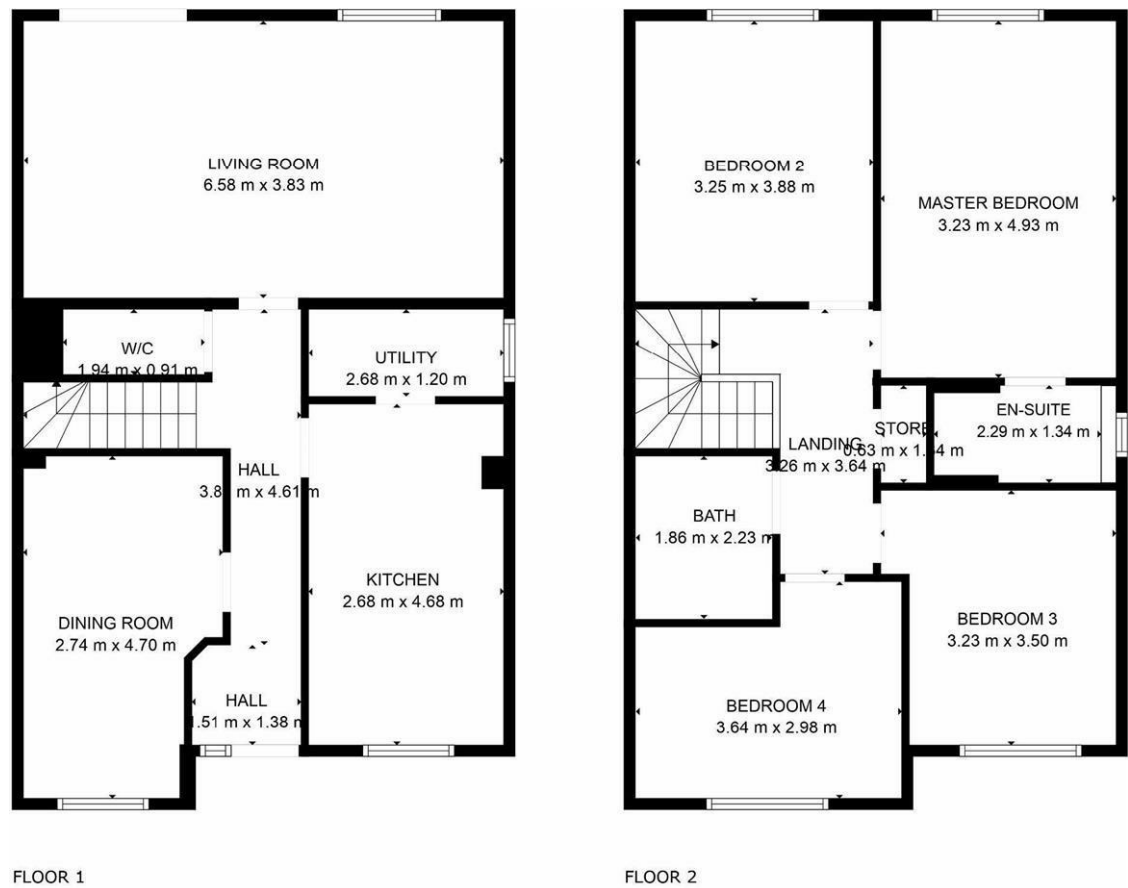
Bedroom Three 11'11" x 9'8" (3.64 x 2.96)

Bedroom Four 12'5" x 7'10" (3.80 x 2.41)

Family Bathroom 7'3" x 6'1" (2.23 x 1.86)

Detached Garage 19'1" x 10'5" (5.82 x 3.20)

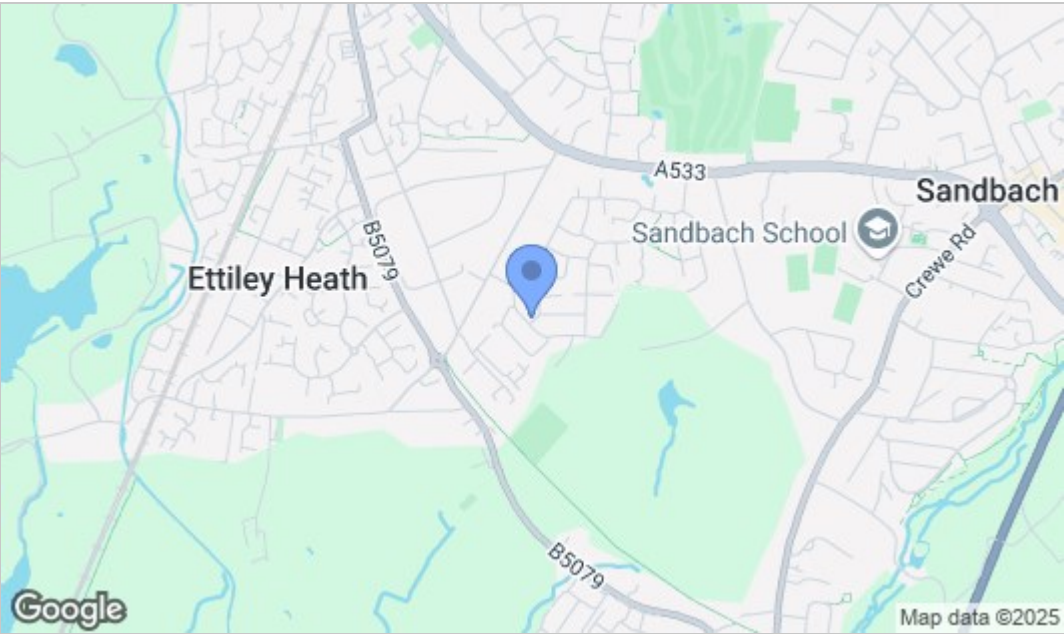
Floor Plan



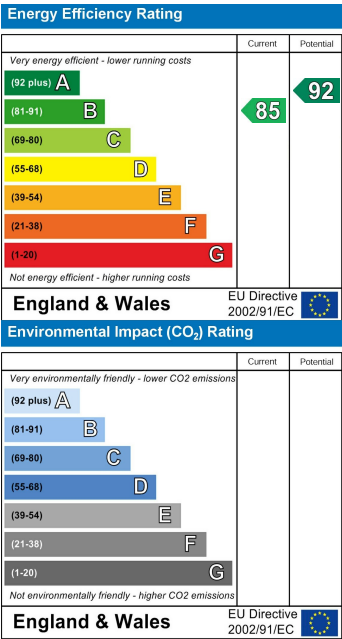
GROSS INTERNAL AREA
FLOOR 1: 67 m2, FLOOR 2: 66 m2
TOTAL: 133 m2

MEASUREMENTS ARE CALCULATED BY CUBICASA TECHNOLOGY. DEEMED HIGHLY RELIABLE BUT NOT GUARANTEED.

Area Map



Energy Efficiency Graph



NOTICE Chris Hamriding Lettings & Estate Agents for themselves and for the vendor or lessors of this property whose agents they are given notice that: (i) the particulars are set out as a general outline only for the guidance of intending purchasers or lessees, and do not constitute, nor constitute part of, an offer of contract, (ii), all descriptions, dimensions, references to condition and necessary permissions for use and occupation, and other details are given in good faith and are believed to be correct but any intending purchasers or tenants should not rely on them as statement or representation of fact but must satisfy themselves by inspection or otherwise as to the correctness of each of them, (iii) no person in the employment of Chris Hamriding Lettings & Estate Agents has any authority to make or give any representation or warranty whatever in relation to this property.