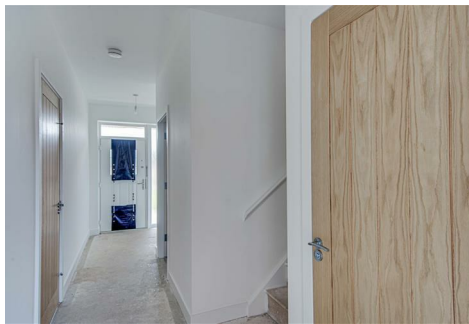


chris hamriding

lettings & estate agents



68 Redwing Road , Sandbach, CW11 3TS

£380,000

****£200 Love2Shop vouchers on completion in addition to developer incentives!** Watch our fully guided, signature tour too!**

Constructed by Latimer Homes, part of the Clarion Housing Group, this executive four bedroom detached home has been built to 'The Henbury' design on the periphery of Broadmeadow Park. As a newly built detached property, it boasts a contemporary design in a great position that is sure to impress!

'The Henbury' has been sympathetically designed, bursting with high quality fixtures and features, some of which include: energy efficient double glazing and gas central heating, French doors from the lounge, four spacious bedrooms, ensuite facilities to the master and useful storage off the landing and hallway. The front of the home features a breakfast kitchen with a range of quality appliances, stylish cabinetry and working surfaces, there is also an additional utility area in the garage keeping the kitchen area quiet and clean, plus a handy downstairs cloakroom.

Upstairs, the property comprises four well-balanced bedrooms, ensuring plenty of room for family and guests. The family bathroom has been tastefully designed, with 'Villeroy & Boch' sanitary suite and stylish tiling, catering to the needs of a modern family.

Accommodation

Entrance Hall

WC

Kitchen 15'3" x 9'2" (4.66 x 2.80)

Living/Dining Room 22'8" x 12'11" (6.93 x 3.95)

First Floor Landing

Bedroom One 16'7" x 11'0" (5.06 x 3.37)

En-suite

Bedroom Two 12'11" x 11'4" (3.95 x 3.46)

Bedroom Three 11'10" x 9'8" (3.63 x 2.97)

Bedroom Four 12'7" x 7'11" (3.84 x 2.42)

Family Bathroom

Integral Garage

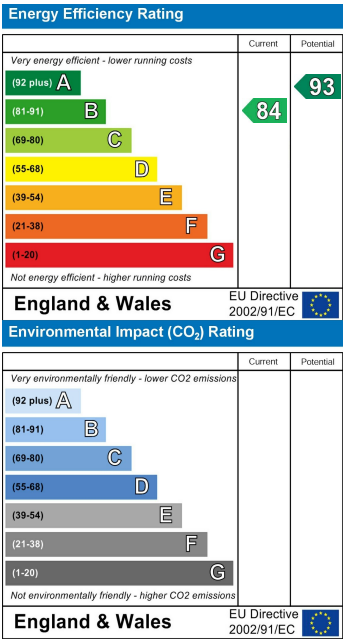
Floor Plan



Area Map



Energy Efficiency Graph



NOTICE Chris Hamriding Lettings & Estate Agents for themselves and for the vendor or lessors of this property whose agents they are given notice that: (i) the particulars are set out as a general outline only for the guidance of intending purchasers or lessees, and do not constitute, nor constitute part of, an offer of contract, (ii), all descriptions, dimensions, references to condition and necessary permissions for use and occupation, and other details are given in good faith and are believed to be correct but any intending purchasers or tenants should not rely on them as statement or representation of fact but must satisfy themselves by inspection or otherwise as to the correctness of each of them, (iii) no person in the employment of Chris Hamriding Lettings & Estate Agents has any authority to make or give any representation or warranty whatever in relation to this property.