



Harbour Watch

391 Sandbanks Road Evening Hill BH14 8JB

£2,500 Per month

D/E

DAVIDSON ESTATES

sales & lettings





Details

**** 10 MONTH LET **** Spacious ground floor apartment offering a remarkable living experience with panoramic views of Poole Harbour, situated on the prestigious Sandbanks Road in Evening Hill.

Property Comprises

Upon entering, you are greeted by a welcoming entrance hallway that provides access to all rooms and includes ample storage solutions. The heart of the home is a large living, dining, and kitchen area that has been thoughtfully designed for modern living. The contemporary kitchen is fitted with high quality appliances and is seamlessly integrated into the open plan layout. From every angle of this room, you can enjoy stunning views, with the living area opening out onto a sun terrace, perfect for soaking up the sun or enjoying al fresco dining. Additionally, the dining room flows into a delightful sun room, providing a bright and inviting space to relax throughout the year. Large windows allow natural light to flood the space, enhancing the sense of openness and connection to the stunning surroundings

Spanning an impressive 1,254 sq ft, this spacious residence boasts two generously sized double bedrooms, each equipped with fitted wardrobes, ensuring ample storage for your belongings. The master bedroom features a luxurious en suite shower room, while a separate bathroom serves the second bedroom and guests.

This apartment has undergone a meticulous refurbishment, showcasing impeccable design and attention to detail, making it a truly special place to call home. Offering secure parking for one car in the garage with an electric up and over door, this property combines convenience with luxury in a sought-after location.

Available to move in now until end July 2026 on a furnished basis. Ideally suited to a single professional or couple.

EPC Rating - E
Council Tax Band - F







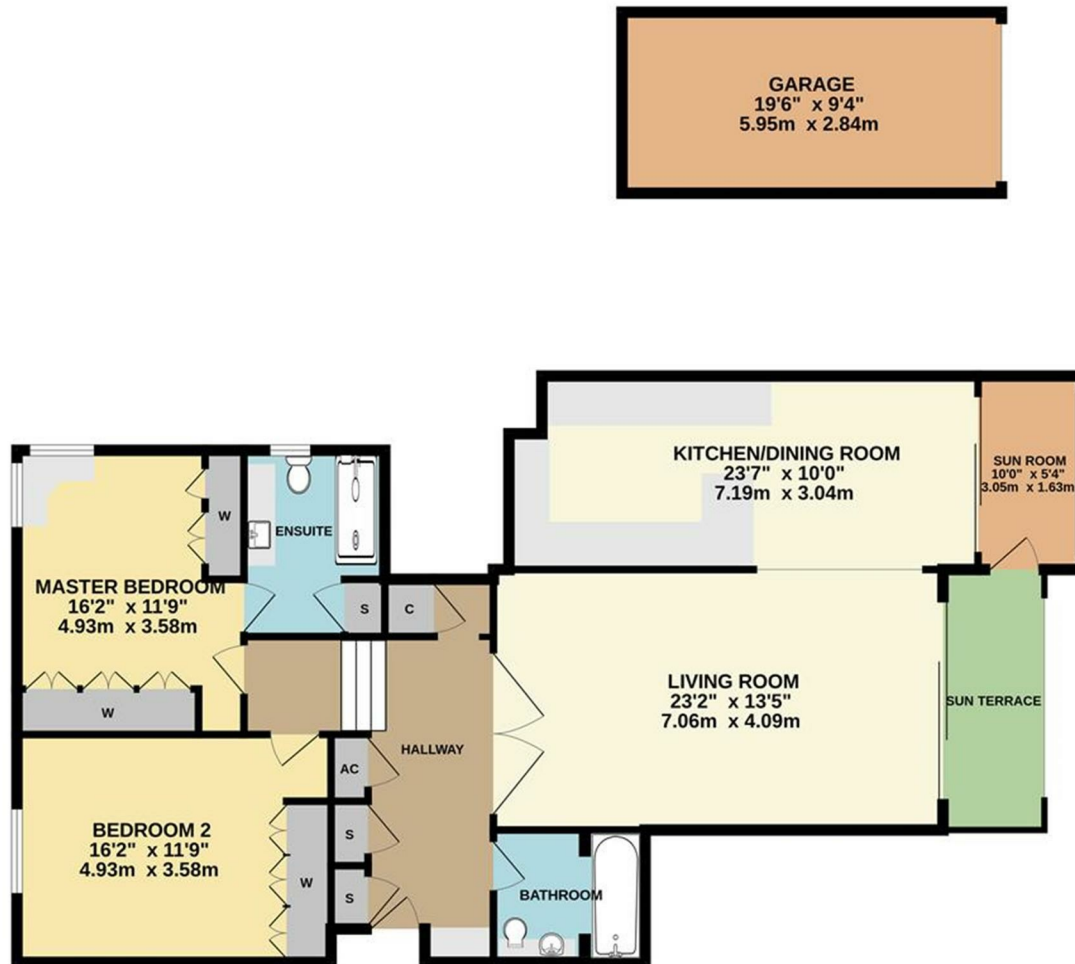
More Information

- Panoramic Views of Poole Harbour
- Spanning an Impressive 1,254 Sq Ft
 - Two Double Bedrooms
 - Luxurious En Suite
- Secure Parking in Garage
 - Impeccable Design
- Sun Room & Terrace
 - Fully Furnished



hello@davidsonsestates.com | davidsonsestates.com

GROUND FLOOR
1436 sq.ft. (133.4 sq.m.) approx.



TOTAL FLOOR AREA : 1436 sq.ft. (133.4 sq.m.) approx.
Whilst every attempt has been made to ensure the accuracy of the floorplan contained here, measurements of doors, windows, rooms and any other items are approximate and no responsibility is taken for any error, omission or mis-statement. This plan is for illustrative purposes only and should be used as such by any prospective purchaser. The services, systems and appliances shown have not been tested and no guarantee as to their operability or efficiency can be given.
Made with Metropix C2025



CONTACT US

Whichever way suits you...

07557 025044 | 07713 870543

hello@davidsonsestates.com

01202 287606

www.davidsonsestates.com

