



Shaftesbury Road
Poole BH15 2LT
£450,000







Details

****SOLD BY DAVIDSON ESTATES - SIMILAR PROPERTIES WANTED****
Situated on the charming Shaftesbury Road in Poole, this end terrace house is a true gem. Boasting a delightful blend of character and modern living, this extended family home offers over 1200 sq ft of accommodation spread across three floors.

Property Comprises

An inviting open plan kitchen diner with bifold doors seamlessly connect the indoor space to the garden, creating a lovely flow of natural light and fresh air. Downstairs further benefits from two additional reception rooms.

The property features three generously sized double bedrooms and a well-appointed three-piece bathroom suite.

Parking to the rear, including off-road parking for two cars and a garage spanning over two floors.

With its convenient location, spacious layout, and modern features, this house on Shaftesbury Road makes an ideal family home.

EPC Rating - TBC
Council Tax Band - C







More Information

- Charming Character Home
 - Over 1,200 Sq Ft
- Popular Central Location
- Three Double Bedrooms
 - Detached Garage
 - Off Road Parking
- Two Reception Rooms
- Modern Kitchen Diner

Location

Situated on a pedestrianised road within close proximity to the hospital, Poole town centre, bus links and Poole train station, residents can enjoy both convenience and tranquillity in this prime location.

Davidson Estates

To see our properties before they go on the market please like us on Facebook (Davidson Estates Sales & Lettings), Instagram (davidsonsestates) & YouTube (davidsonsestates)

Copyright

All photos, video, and drone footage are copyrighted by Davidson Estates Sales & Lettings LTD. All rights reserved.

Any redistribution or reproduction of part or all of the contents in any form is prohibited other than the following:

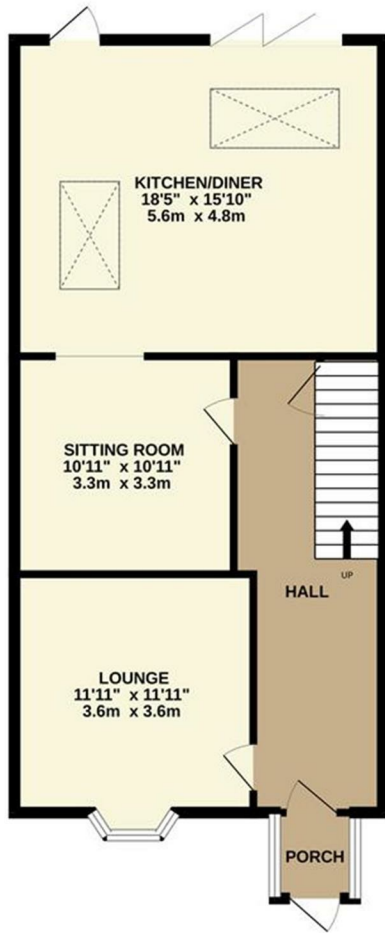
1. You may print or download to local hard disk extracts for your personal and non-commercial use only
2. You may copy the content to individual third parties for their personal use, but only if you acknowledge Davidson Estates as the source of the material

You may not, except with our express written permission, distribute or commercially exploit the content. Nor may you transmit it or store it on any other website or another form of the electronic retrieval system.

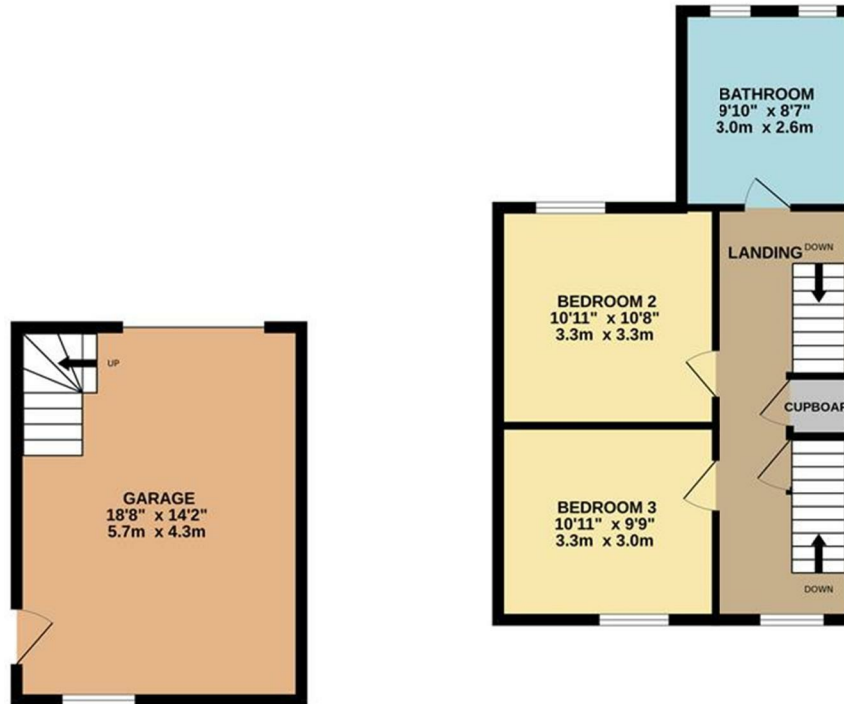


hello@davidsonsestates.com | davidsonsestates.com

GROUND FLOOR
996 sq.ft. (92.5 sq.m.) approx.



1ST FLOOR
450 sq.ft. (41.8 sq.m.) approx.



2ND FLOOR
183 sq.ft. (17.0 sq.m.) approx.



37 SHAFTESBURY ROAD

TOTAL FLOOR AREA : 1629 sq.ft. (151.3 sq.m.) approx.

Whilst every attempt has been made to ensure the accuracy of the floorplan contained here, measurements of doors, windows, rooms and any other items are approximate and no responsibility is taken for any error, omission or mis-statement. This plan is for illustrative purposes only and should be used as such by any prospective purchaser. The services, systems and appliances shown have not been tested and no guarantee as to their operability or efficiency can be given.
Made with Metropix ©2024



DAVIDSON ESTATES
sales & lettings

CONTACT US

Whichever way suits you...

07557 025044 | 07713 870543

hello@davidsonsestates.com

01202 287606

www.davidsonsestates.com

