



1 DERBY RANGE

STOCKPORT, SK4 4AB

£450 PER MONTH

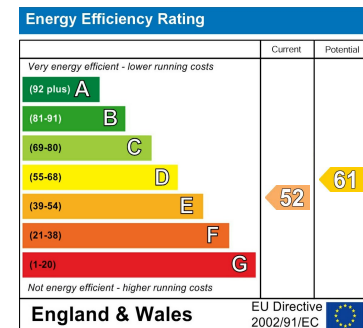
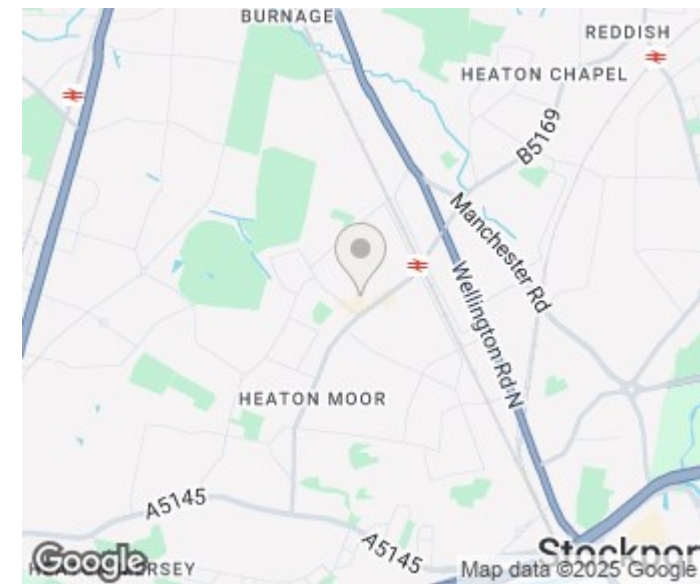
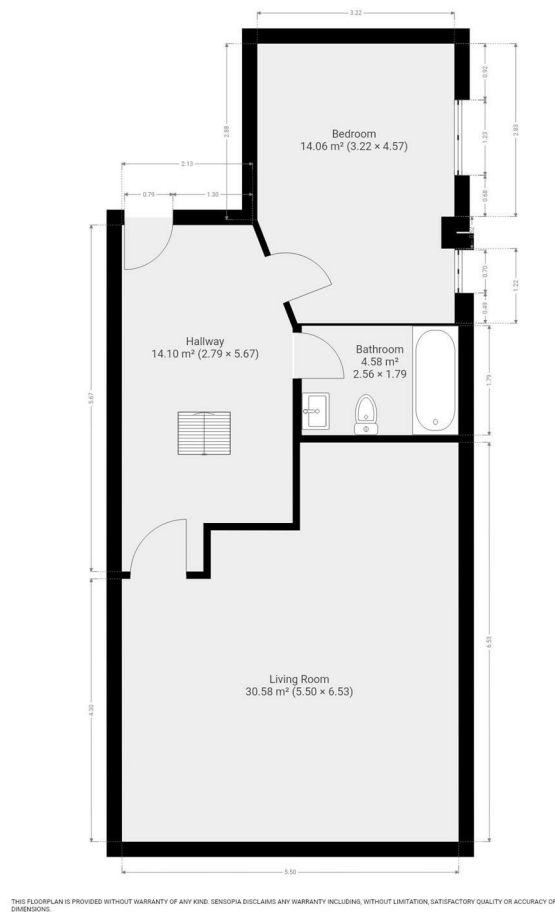
Welcome to Jennings Court – a charming shared apartment located in the desirable area of Derby Range, Stockport.

This listing is for a single bedroom within a shared 3-bedroom flat in Flat 2, Jennings Court. You'll be sharing the kitchen, bathroom, and communal areas with one other housemate.

The flat itself offers a spacious living environment, with a total of 1,216 square feet of well-designed space. Each bedroom provides a comfortable retreat, ideal for rest and relaxation, while shared areas are maintained to a high standard for everyone's comfort.

Perfect for individuals seeking a modern, sociable living space in a vibrant and well-connected neighbourhood. The location offers a great balance of urban convenience and suburban tranquility.





Agents Note: Whilst every care has been taken to prepare these particulars, they are for guidance purposes only. All measurements are approximate and are for general guidance purposes only and whilst every care has been taken to ensure their accuracy, they should not be relied upon and potential buyers/tenants are advised to recheck the measurements

Levenshulme
902 Stockport Road
Levenshulme
Greater Manchester
M19 3AD

0161 660 0993.
info@jacobknight.com
<https://jacobknight.com/>

