



2 bedroom Semi-Detached Bungalow located in Parkway.

Offers Over
£175,000

Find us on..



1 Parkway, Knott End On Sea, FY6 0DB



2



1



1



EPC

TB
C



FULL DESCRIPTION

LOUNGE

15' 2" x 11' 8" (4.62m x 3.56m)

A stunning spacious room with newly fitted carpets, double radiator and uPVC double glazed window to the front.

HALLWAY

6' 6" x 4' 1" (1.98m x 1.24m)

Carpeted with new wooden doors leading to kitchen, shower room, bedroom one and bedroom two.

KITCHEN

11' 10" x 9' 11" (3.61m x 3.02m)

A range of newly fitted modern base and wall units with induction hob, fitted electric oven, integrated fridge and freezer, modern black double sink with drainer. Vinyl flooring, radiator, uPVC double glazed window and uPVC double glazed door leading to side of the property.

SHOWER ROOM

6' 3" x 5' 4" (1.91m x 1.63m)

Newly fully tiled fitted suite comprising of a walk in shower with glass screen, double vanity unit with sink and low flush w/c. Heated wall mounted towel rail and uPVC obscure window to the side.

BEDROOM ONE

12' 10" x 10' 10" (3.91m x 3.3m)

With views overlooking the garden, this double room benefits from a newly fitted carpet, radiator and uPVC glazed window to the rear.

BEDROOM TWO

9' 6" x 10' 10" (2.9m x 3.3m)

Another double bedroom with a newly fitted carpet, radiator and a uPVC window to the rear.

GARDEN

The rear garden is mainly laid to lawn with a paved path and borders. A generous space with privacy to the rear.

FRONT ELEVATION

Low maintenance slate chipped driveway to the front with a boarded feature. Access to the side, leading to the rear garden.

ENTRANCE PORCH

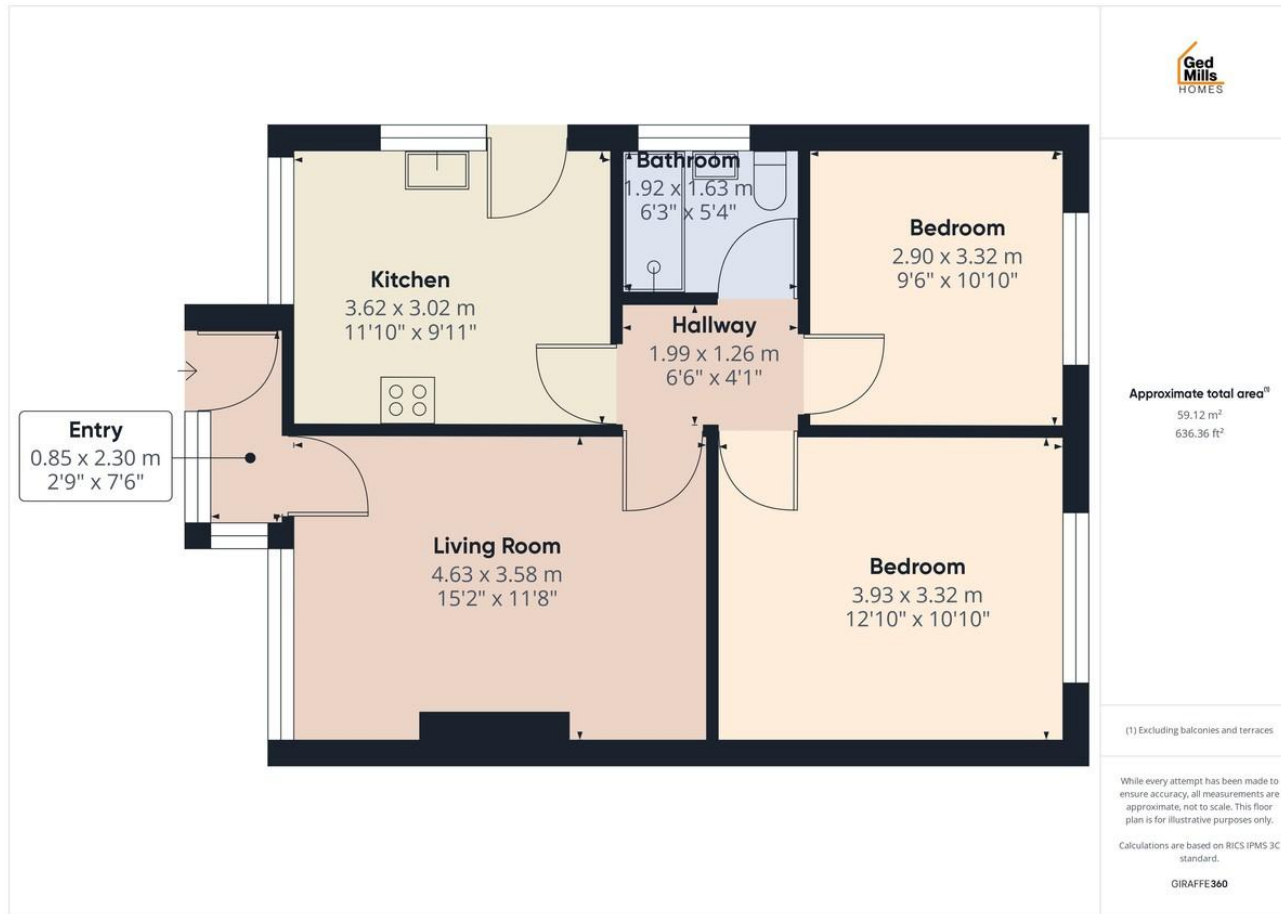
Newly fitted uPVC door leading into a uPVC double glazed entrance porch with a door leading to the lounge.

ADDITION INFORMATION

Benefits of the property include, new GCH heating system, re-plastered throughout and fully insulated



FLOORPLAN



DIRECTIONS

CONTACT

205 Church Street, Blackpool,
FY6 7PA

E info@gedmillshomes.co.uk

T 01253 468995

www.gedmillshomes.co.uk

Find us on..

