

# THE V

**No.1**

**€ 2 450.000**

—

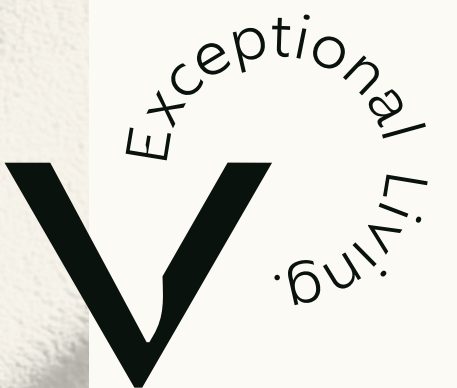
T3

Duplex Loft

Block A

Floor 1 & 2

**THE Penthouse  
Apartments**









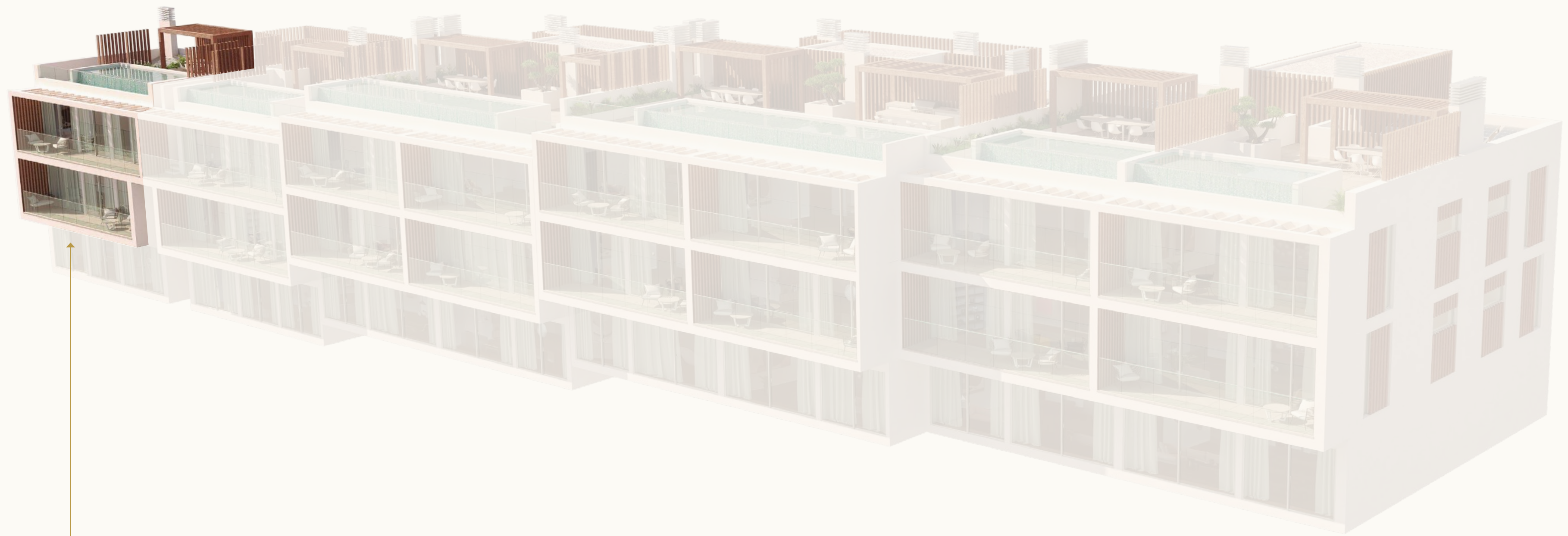
# Exceptional Apartment.

## THE Penthouse Apartments

Two 4 bedroom, two 3 bedroom and one 2 bedroom penthouse apartments, all featuring a bespoke kitchen, ensuite luxury bathrooms, extensive roof terrace with private pool, outdoor kitchen and dining. One unique 3 bedroom penthouse duplex apartment, also featuring a bespoke kitchen, luxury ensuite bathrooms, extensive roof terrace with a private pool, outdoor kitchen and dining.



THE Penthouse Apartments



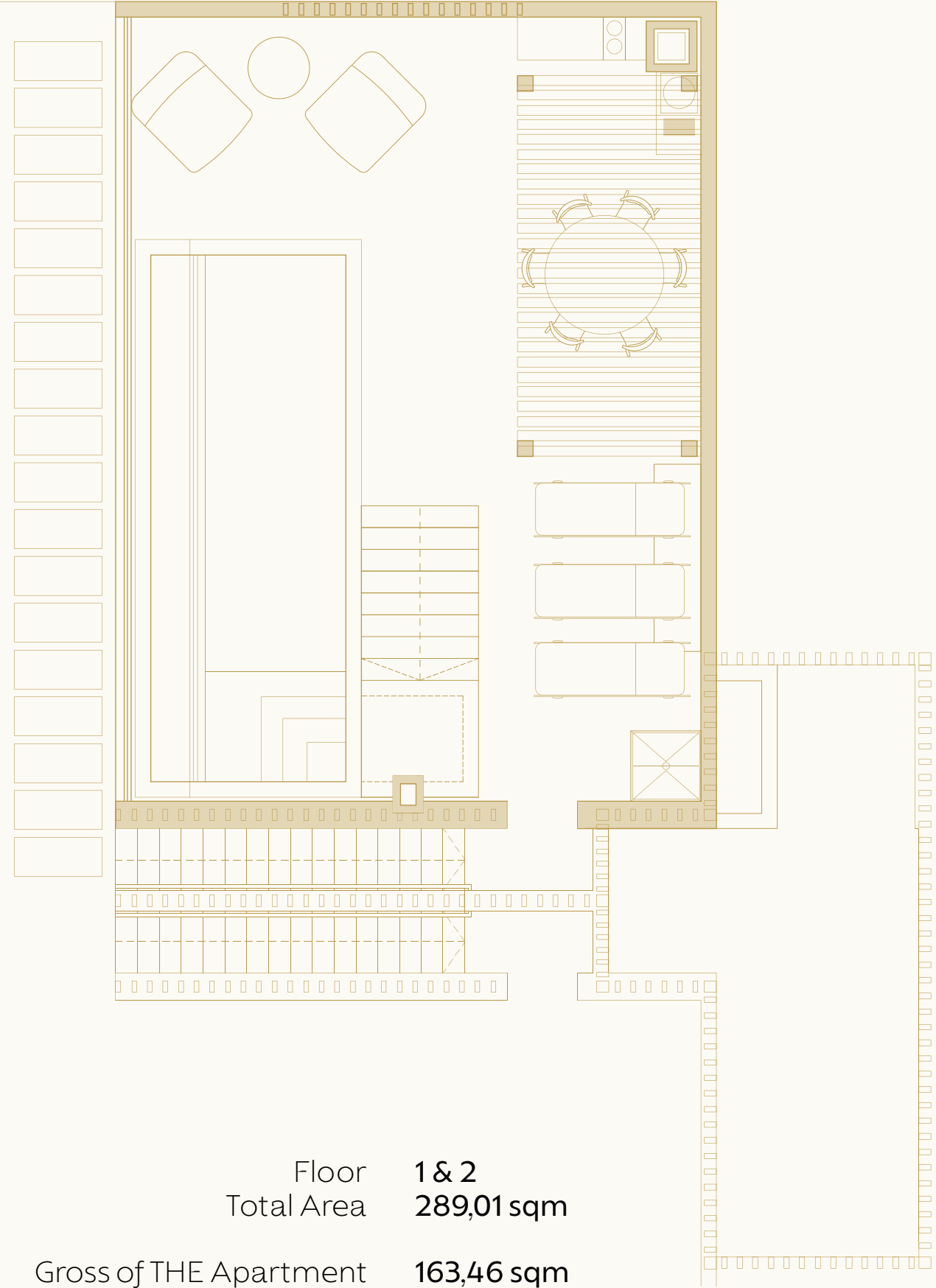
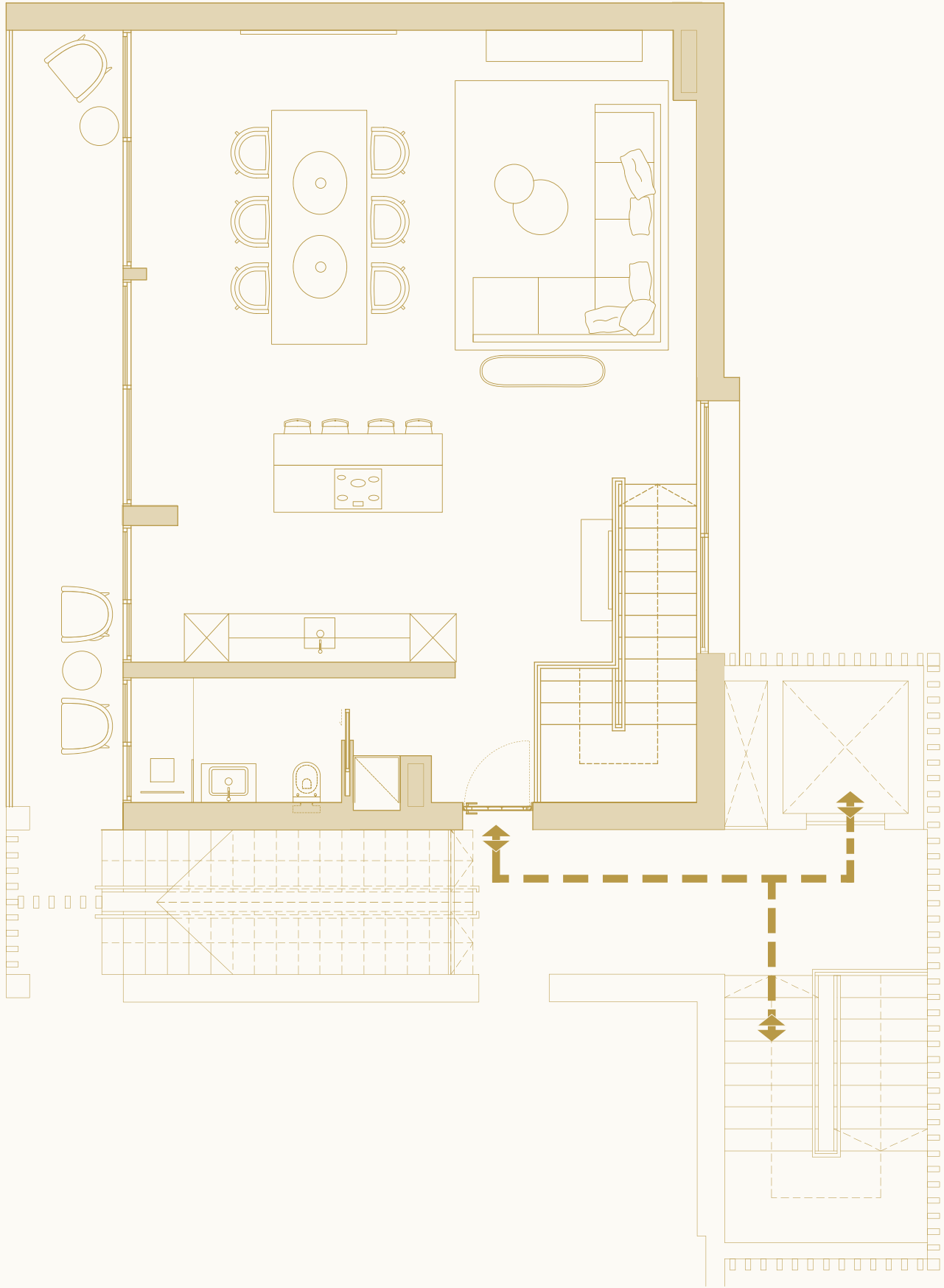
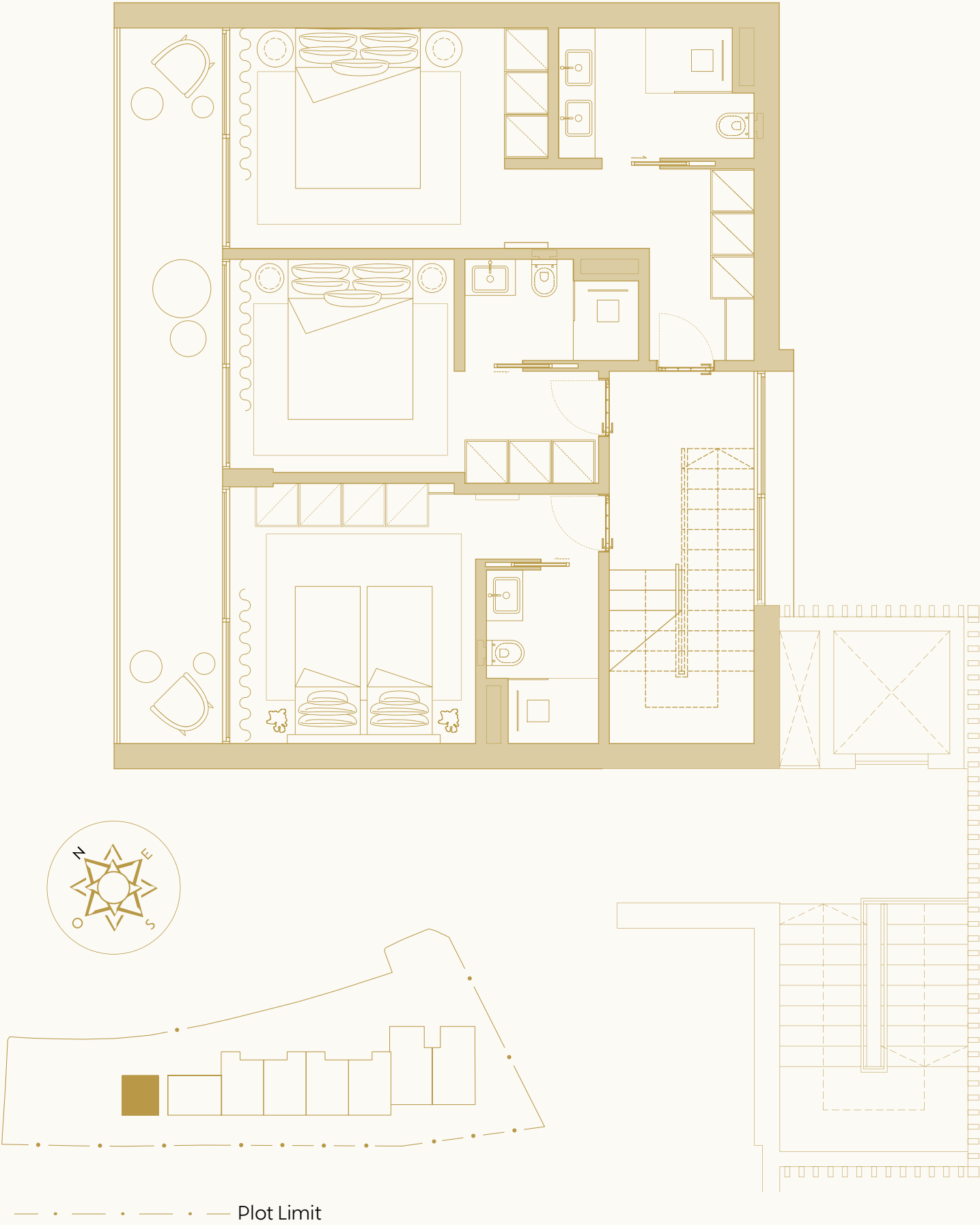
**No.1**

T3  
Block A – Floor 1 & 2  
289,01 sqm



# Plan

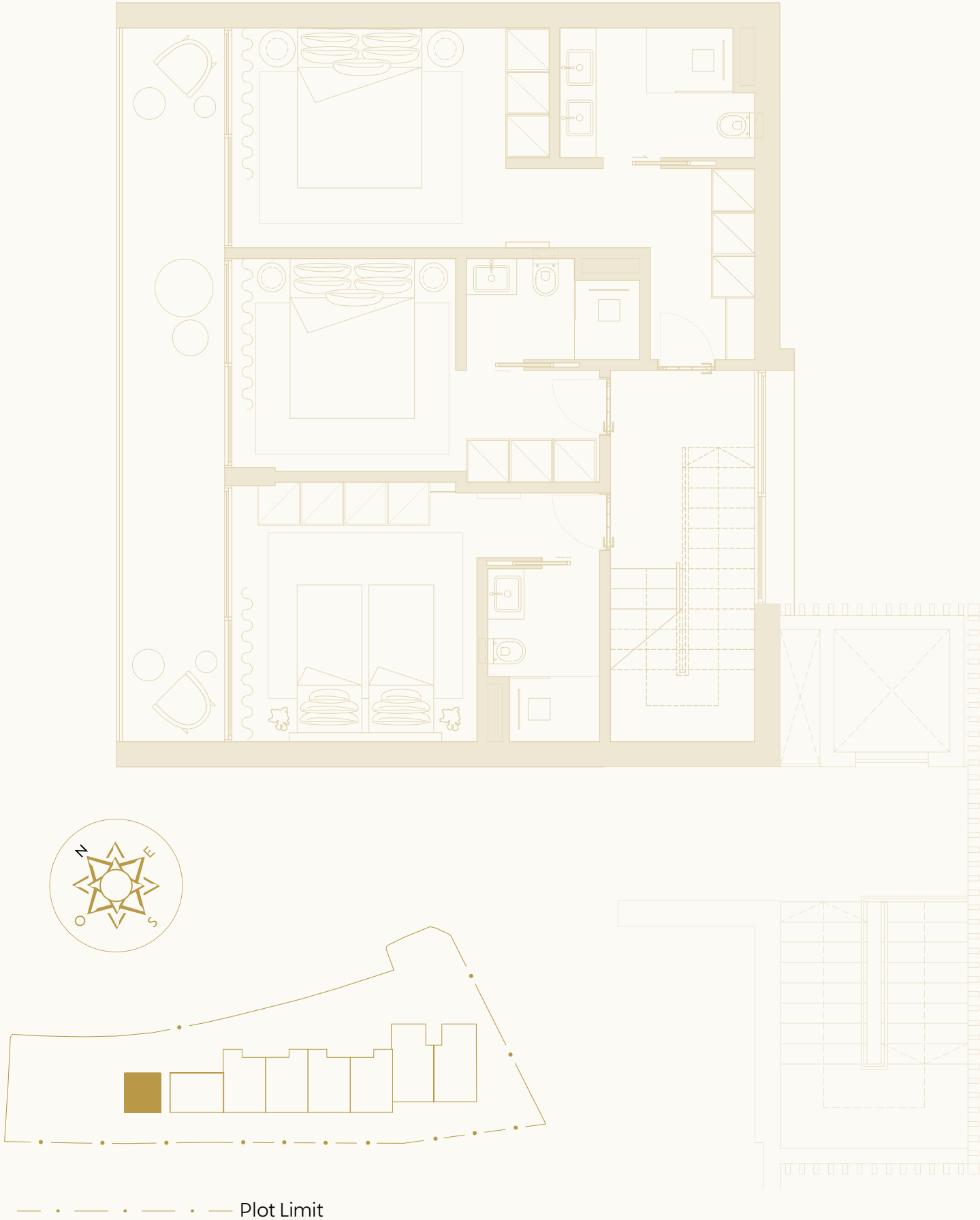
Block A  
Apartment No.1



Floor	1 & 2
Total Area	289,01 sqm
Gross of THE Apartment	163,46 sqm
Balcony Gross	29,84 sqm
Rooftop	85,65 sqm

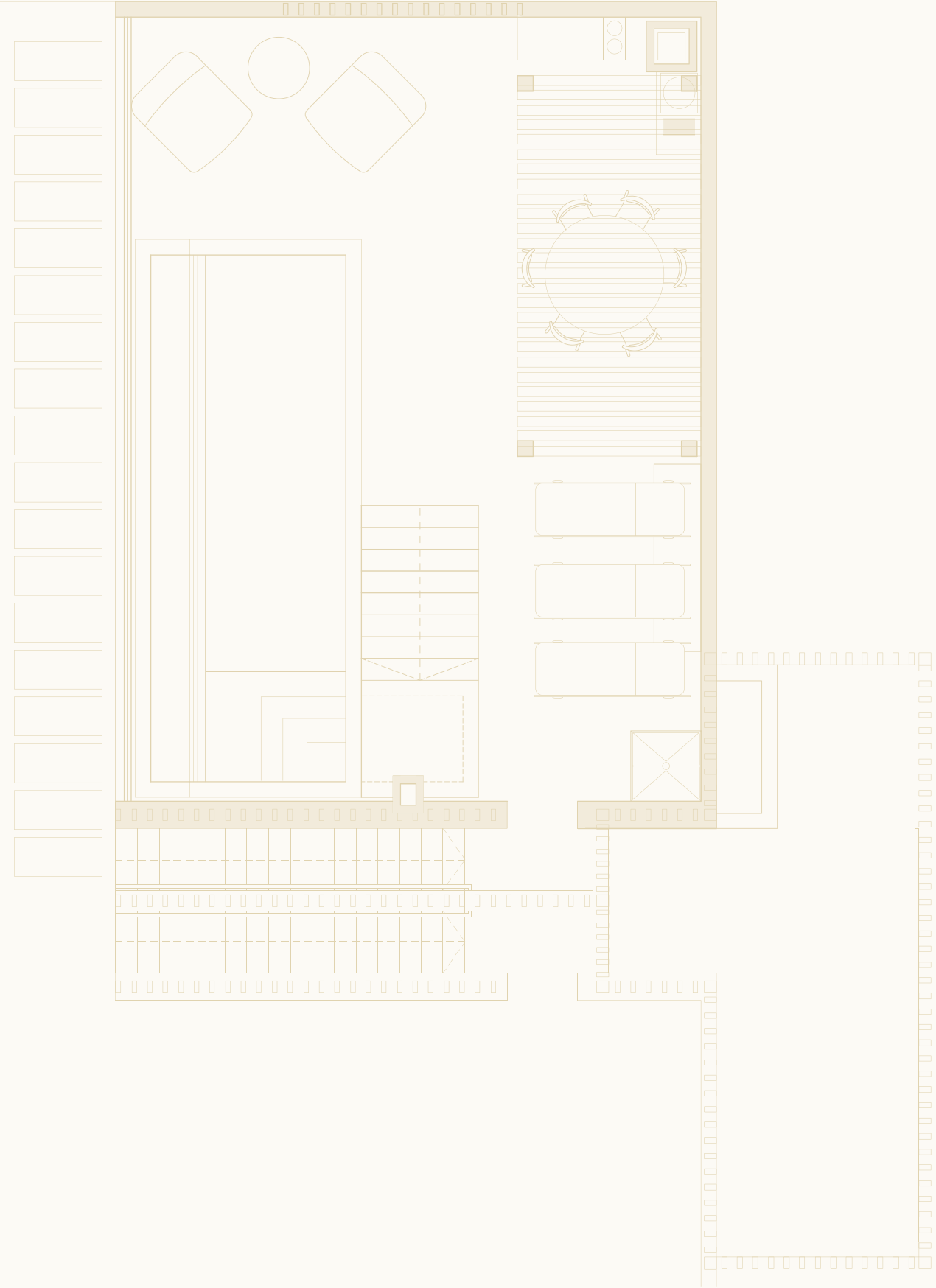
# Kitchen Layout

Block A  
Apartment No.1



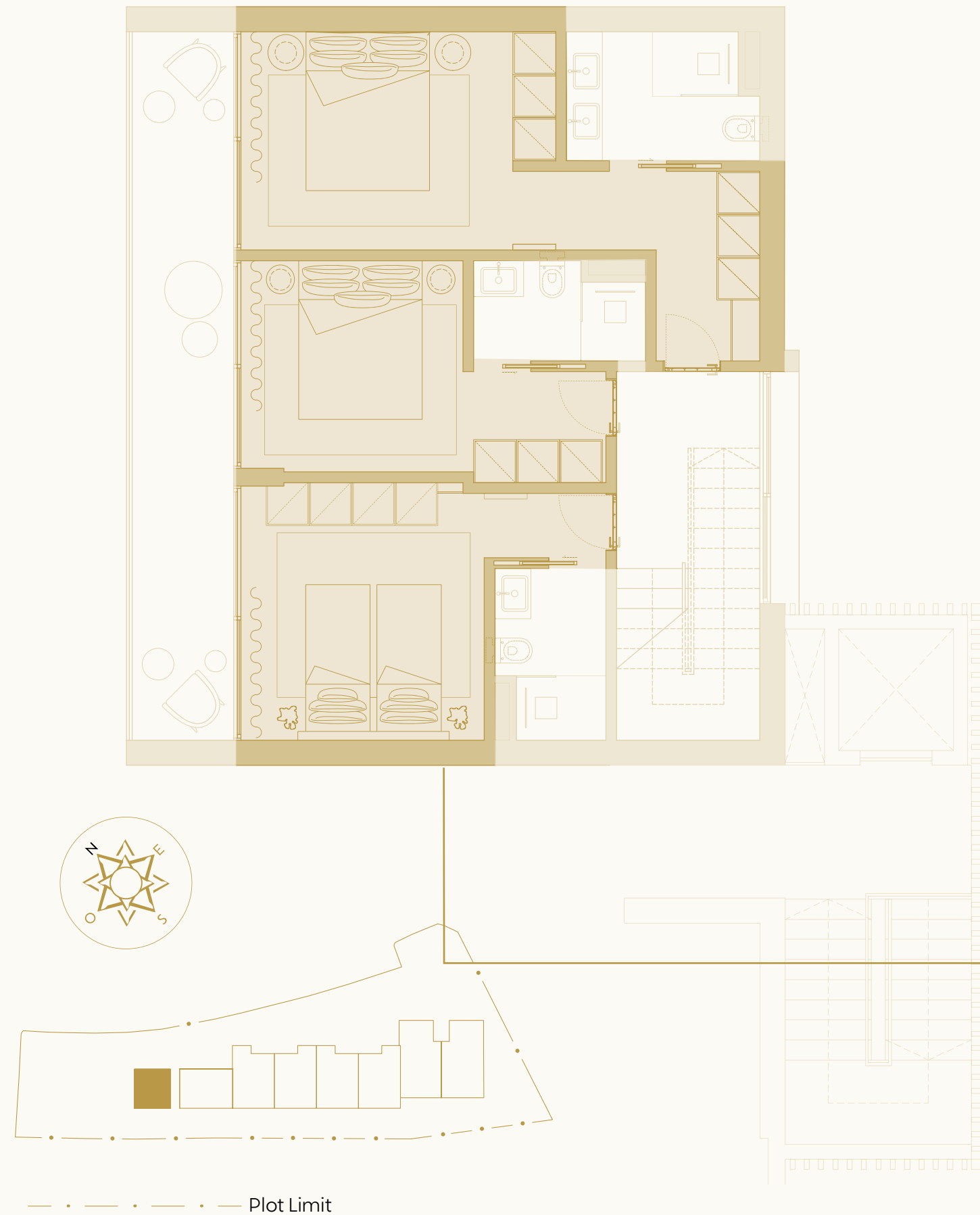
## Kitchen

Each bespoke fully equipped kitchen has been handcrafted by Edwin Loxley in the United Kingdom and installed in Portugal by their specialised fitters onsite. Painted in Farrow & Ball with Dekton worktops, the kitchens are supplied with a lifetime guarantee.



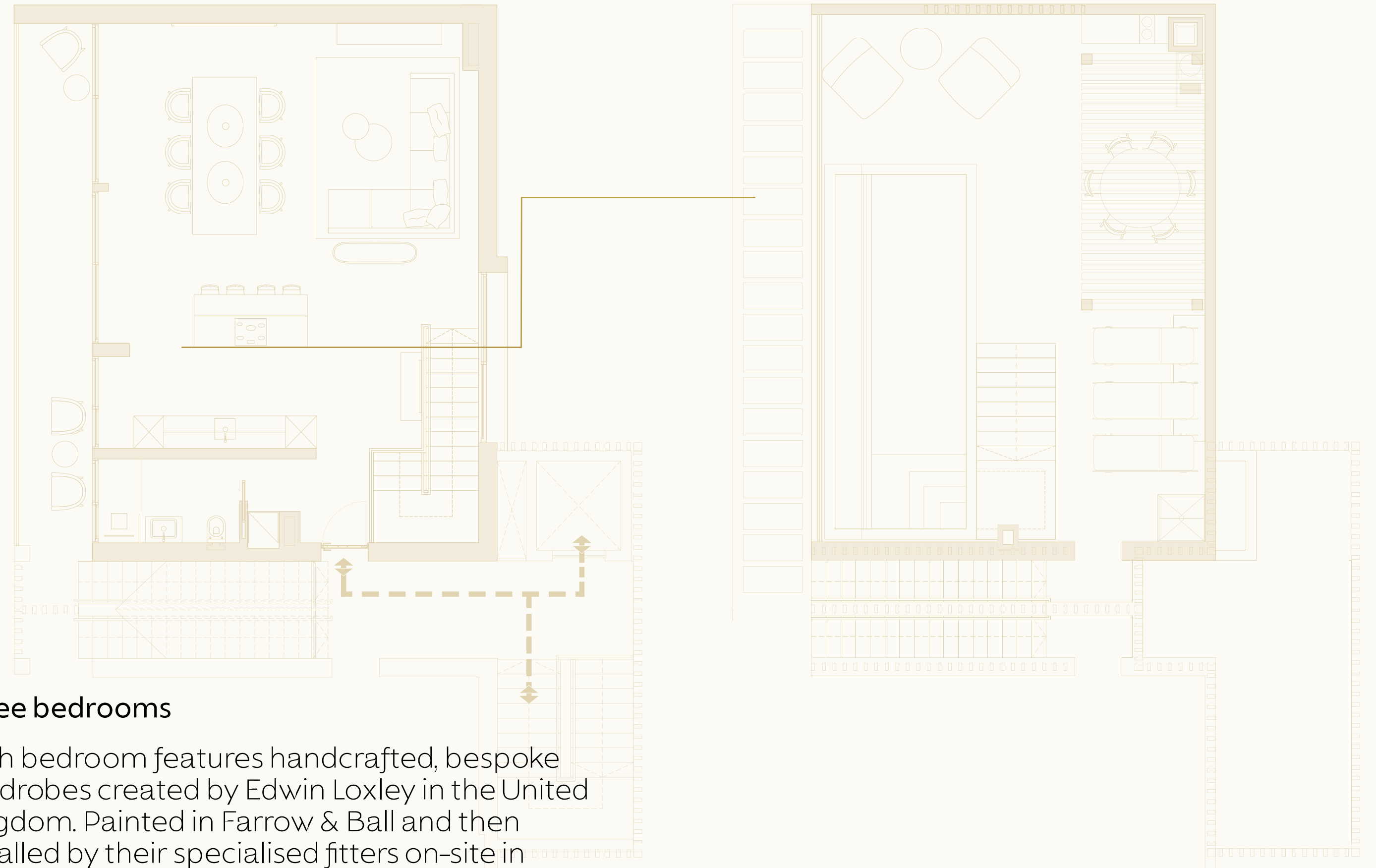
# Bedrooms Layout

Block A  
Apartment No.1



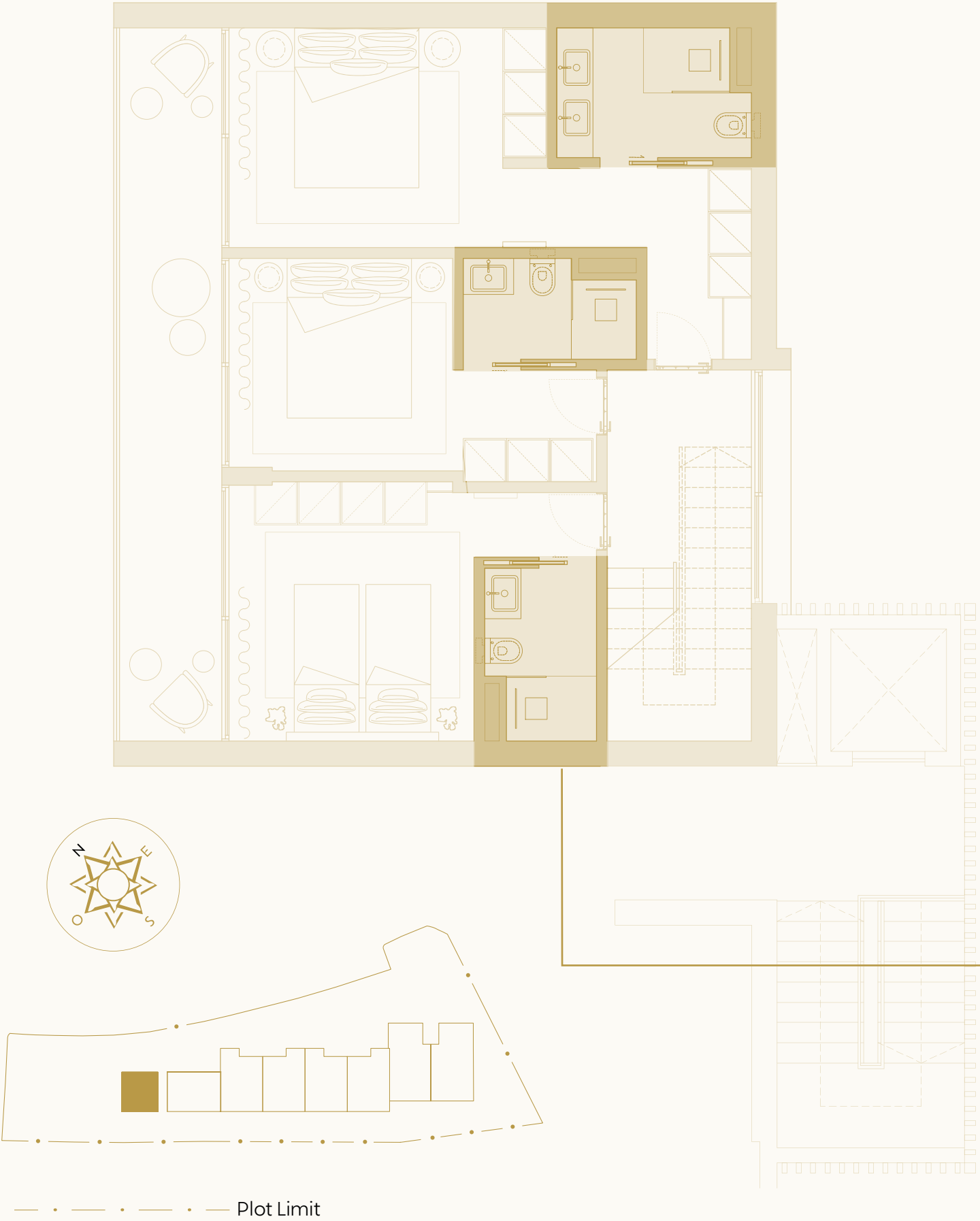
## Three bedrooms

Each bedroom features handcrafted, bespoke wardrobes created by Edwin Loxley in the United Kingdom. Painted in Farrow & Ball and then installed by their specialised fitters on-site in Portugal.



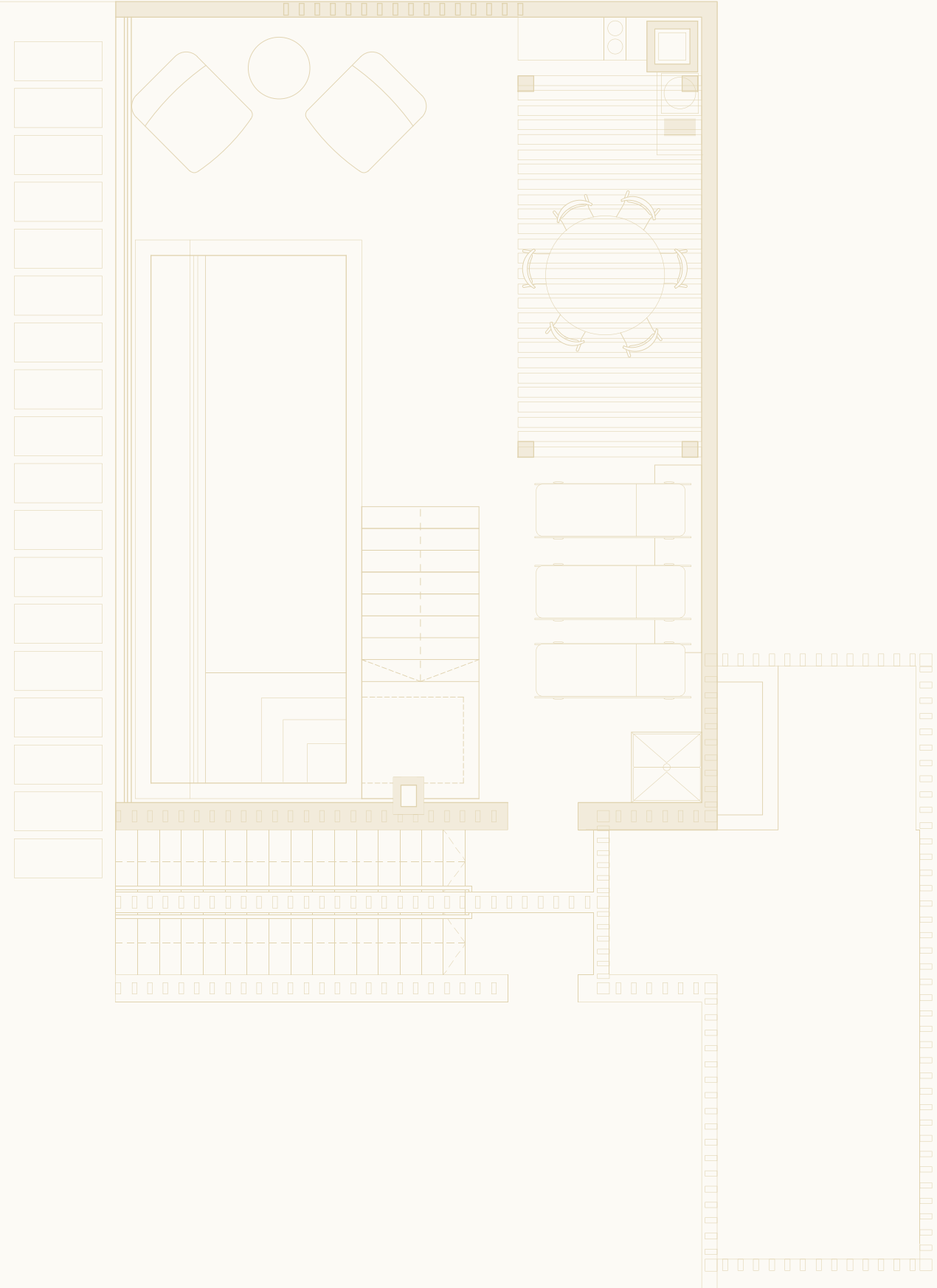
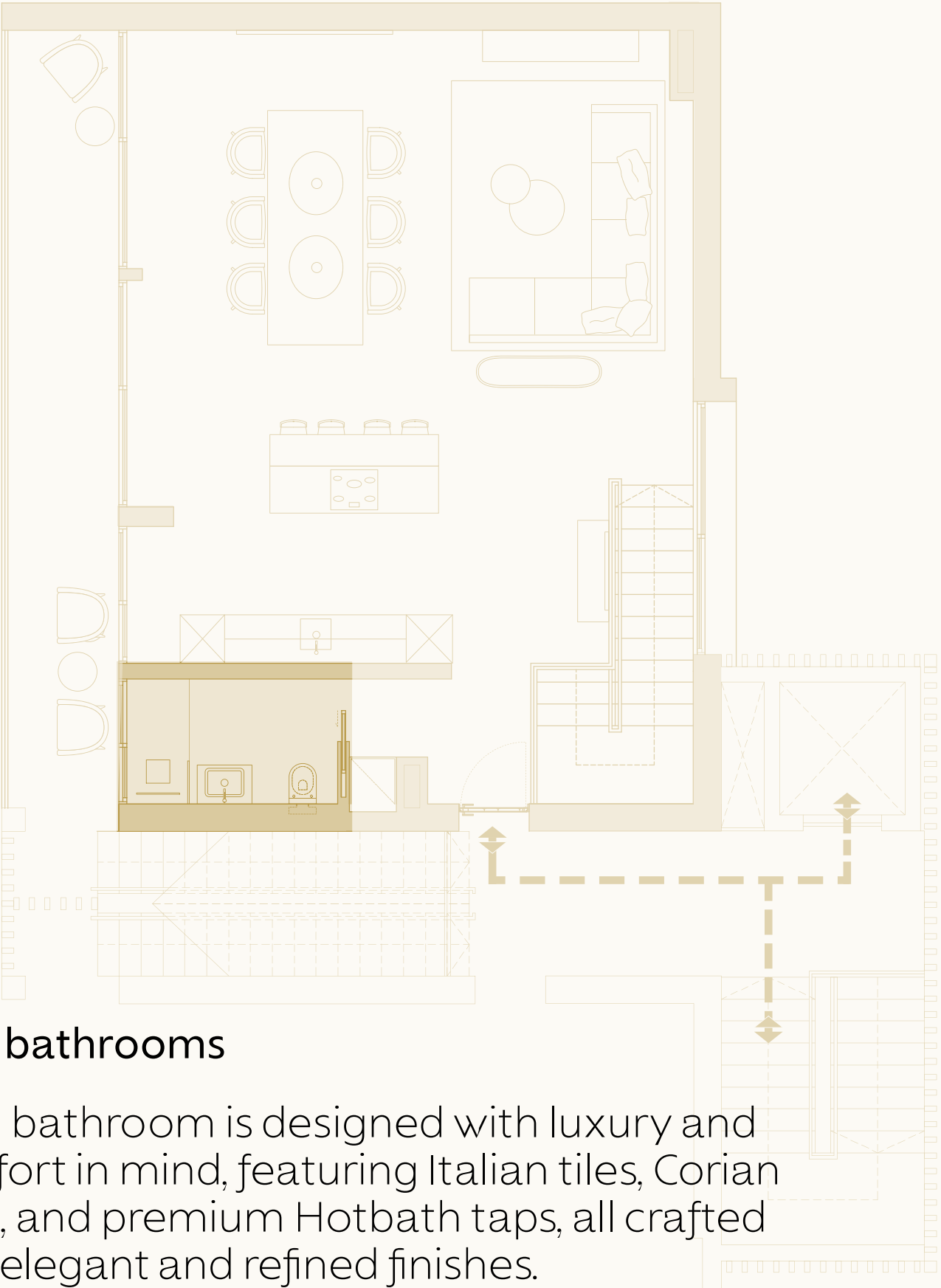
# Bathrooms Layout

Block A  
Apartment No.1



## Four bathrooms

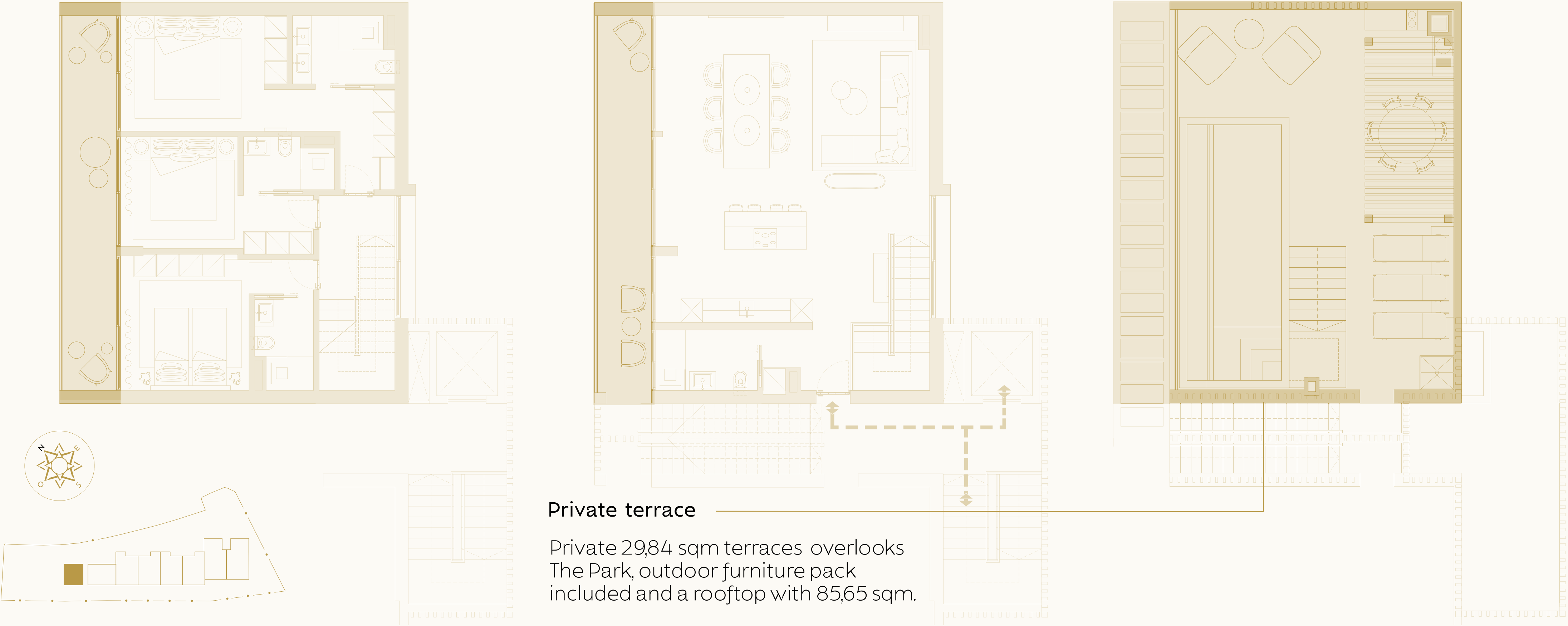
Each bathroom is designed with luxury and comfort in mind, featuring Italian tiles, Corian sinks, and premium Hotbath taps, all crafted with elegant and refined finishes.





# Outdoor Space

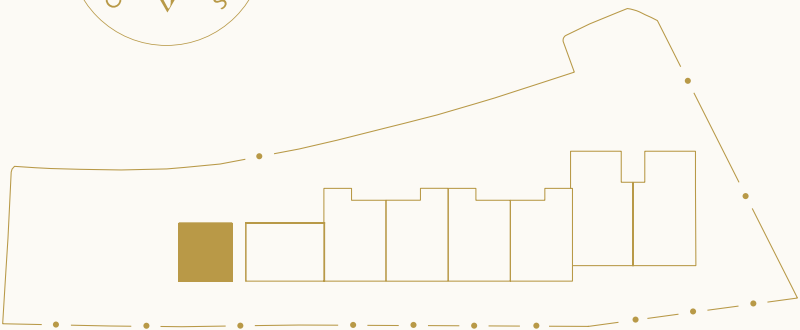
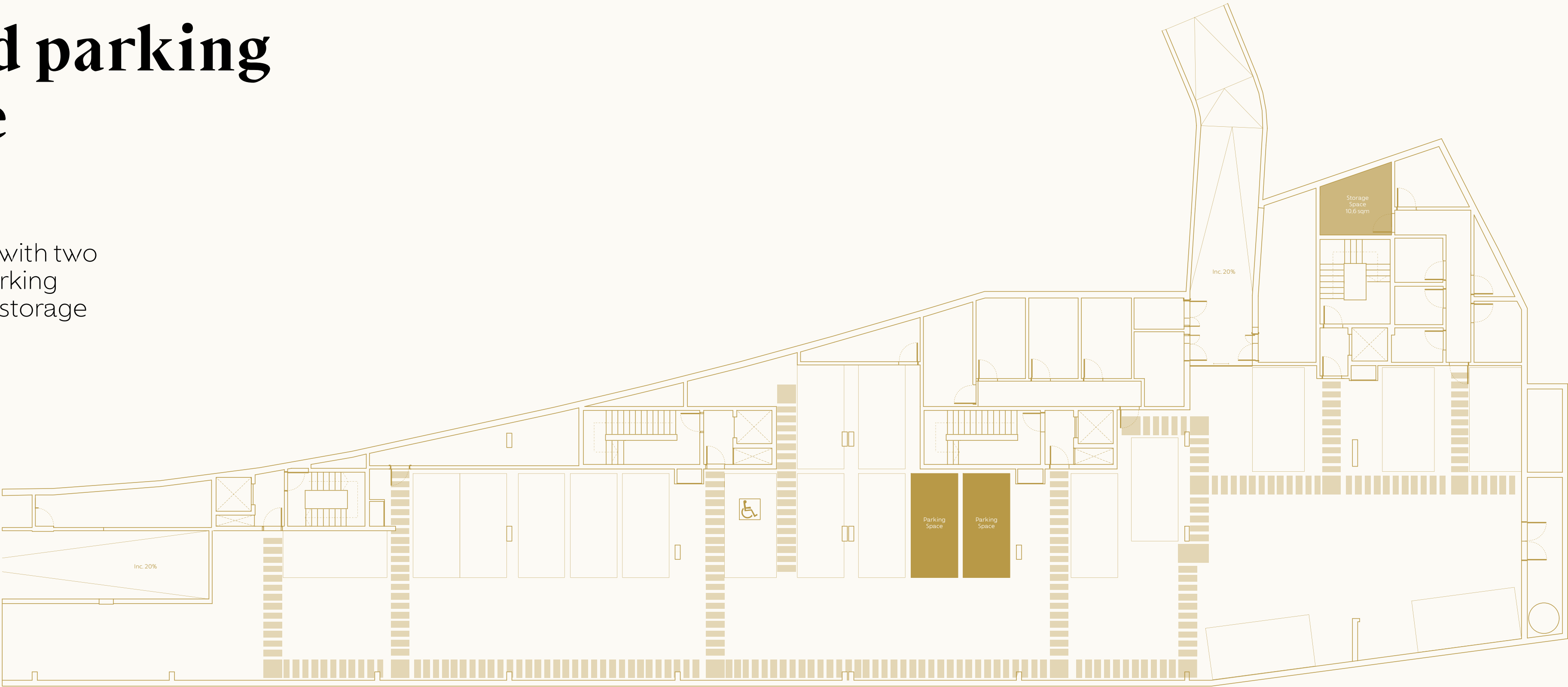
Block A  
Apartment No.1





# Dedicated parking & storage -1 level

Apartment No.1 comes with two secure underground parking spaces and a 10,06 sqm storage locker as illustrated.



Plot Limit

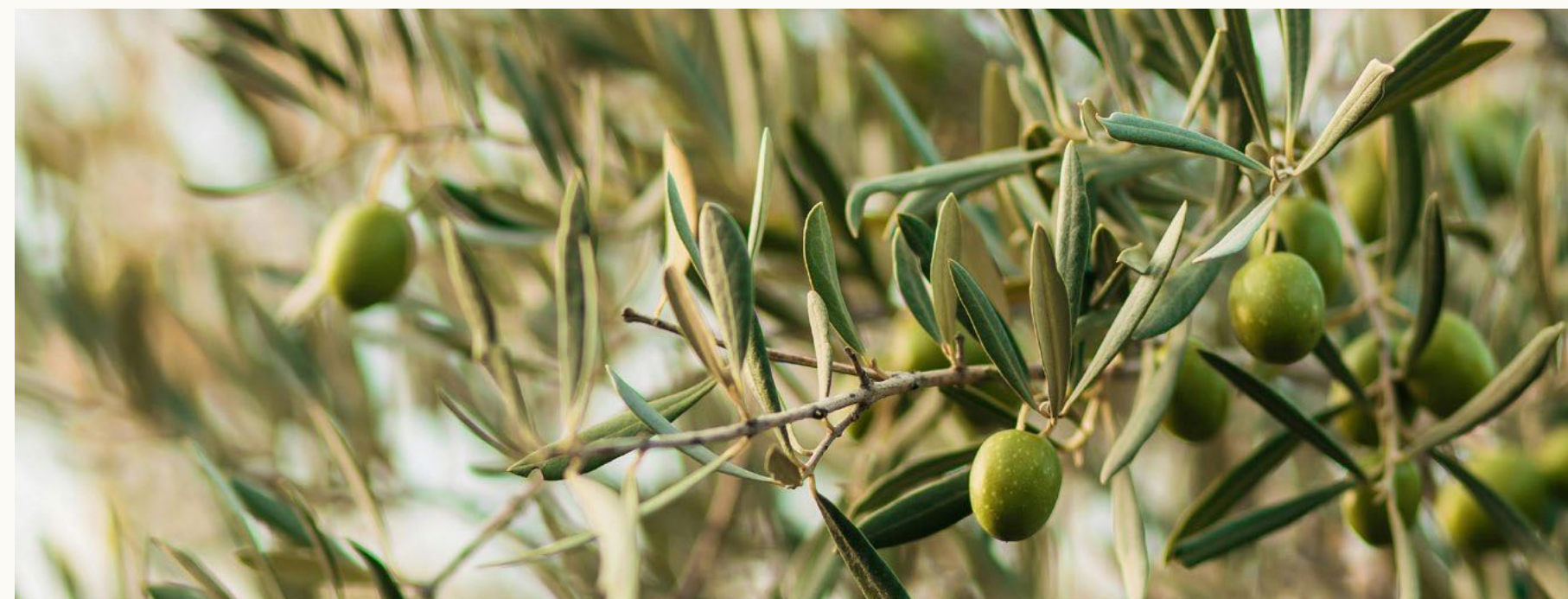


# THE Park

Exclusive use for THE V residents.

Thoughtfully landscaped by Jardim Vista, with mediterranean native plants focusing on low water usage, THE Park features:

- > Communal kitchen herb garden.
- > Communal orchards featuring native fruit trees: lemons, oranges, apricots, peaches, avocado and fig.
- > Sports zone: multi use court and basketball nets walking or running track with fitness zones along the way and a children's play area created from wood to blend into the landscaped.
- > Petanque court.





# THE Exceptional Furniture

Every space is carefully designed using the finest materials with the clear intention of creating a welcoming atmosphere. In exclusive partnership with Pure Allure Interiors, these environments foster a true sense of home.

> Indoor furniture (sofá, deco cushions, carpets, dining table and chairs, suspended lights, mirrors and wall art, candles, beds and bed-side tables).

> Curtains only and wallpaper (fitting included) – Mattresses and fillings

> Two sets of bedlinen and towels per bedroom

**€ 50.000**

Electric polyscreen blinds and kitchen utensils are not included in the package.







# THE V Contact

Contact us to learn more  
about THE V and/or register  
your interest:

M. +351 911 018 157  
E. [sales@thev.pt](mailto:sales@thev.pt)  
[thev.pt](http://thev.pt)



# THE V

Exceptional Living.



Disclaimer: The information and the images contained in this factsheet are indicative and for technical reasons, business or legal matters, may be subject to changes or variations.