

# THE V

**No.17**

**€ 1150.000**

—

T3  
Block D  
Floor 1

**THE Park View  
Apartments**

Exceptional Living.





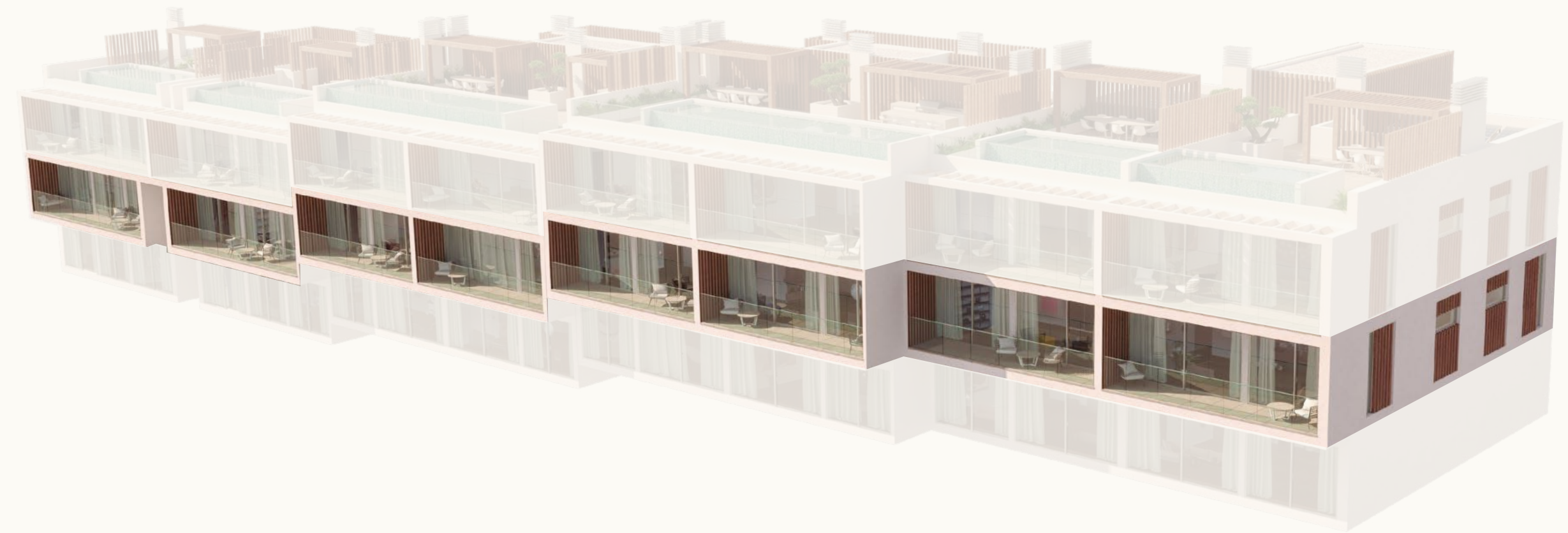




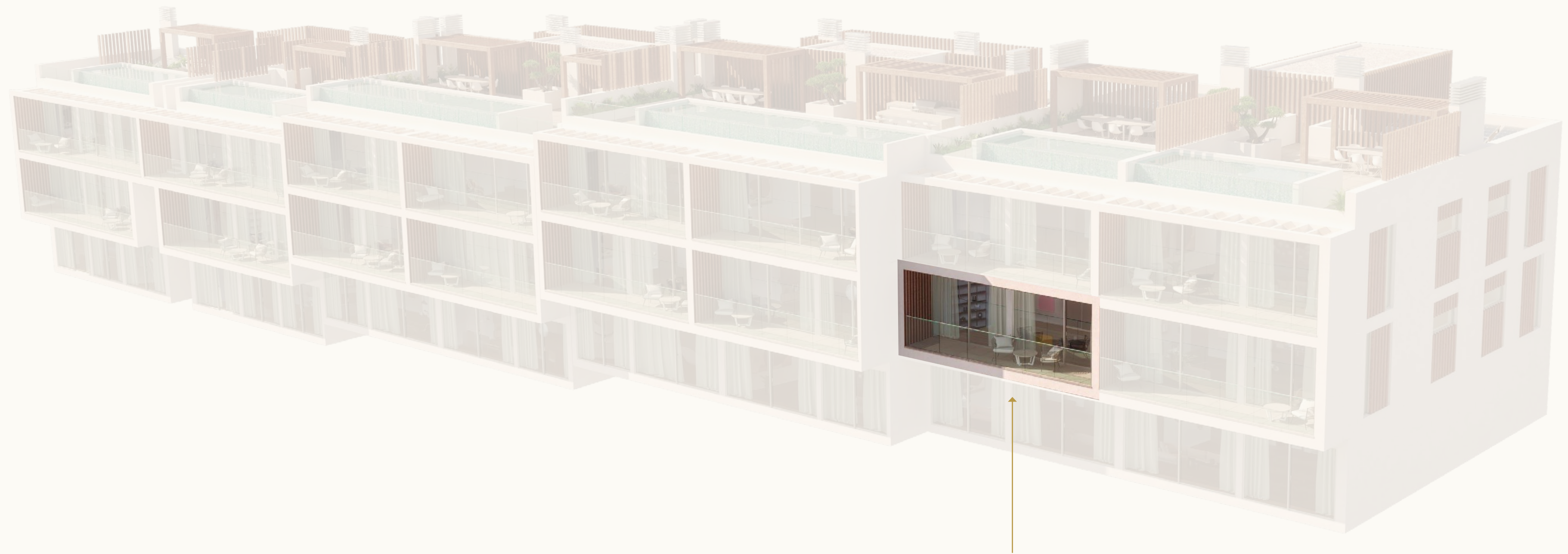
# Exceptional Apartment.

## THE Park View Apartments

Five 2 bedroom and two 3 bedroom first floor apartments, all featuring a bespoke kitchen, luxurious ensuite bathrooms and private terrace overlooking THE Park.



THE Park View Apartments

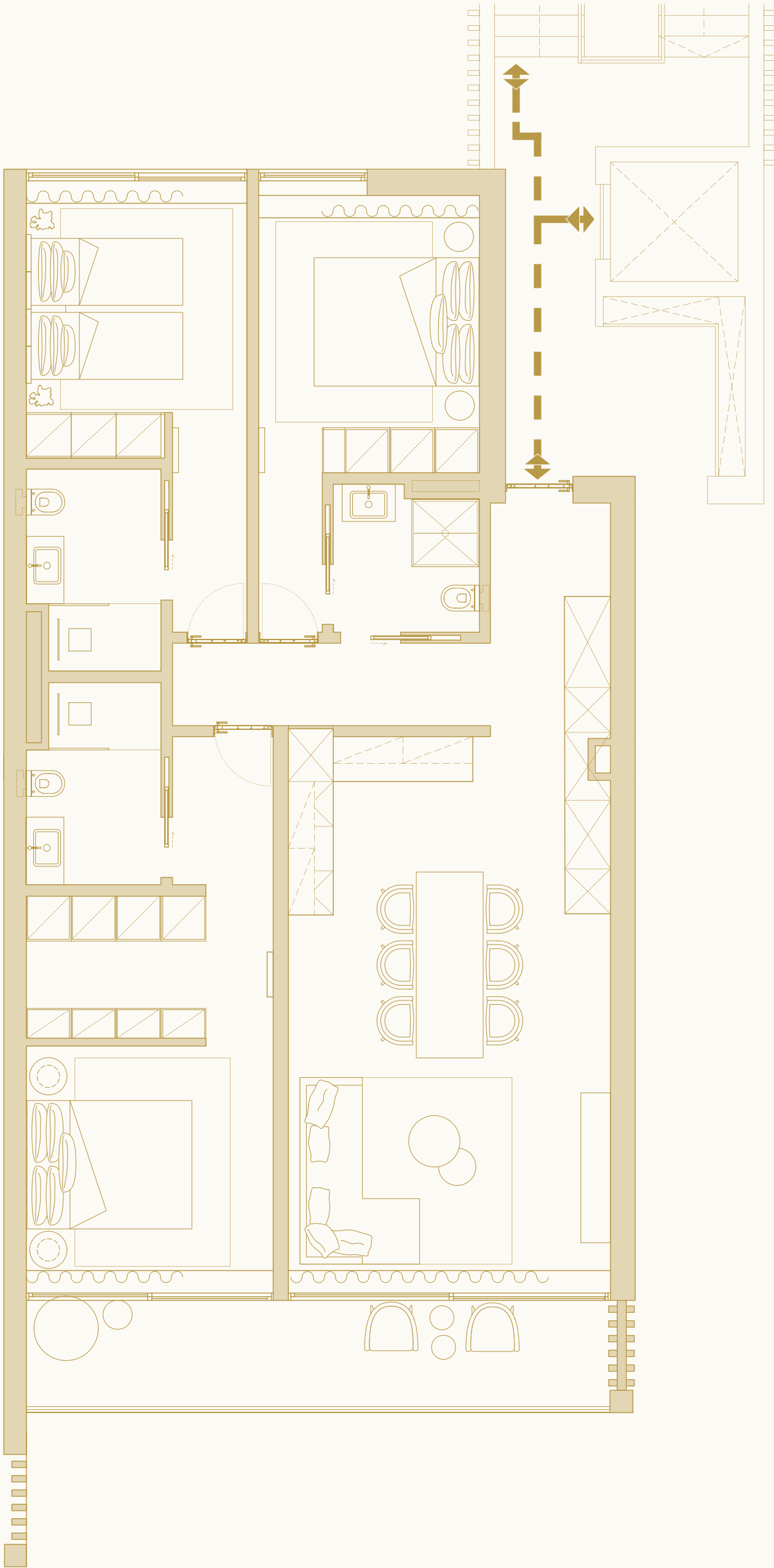
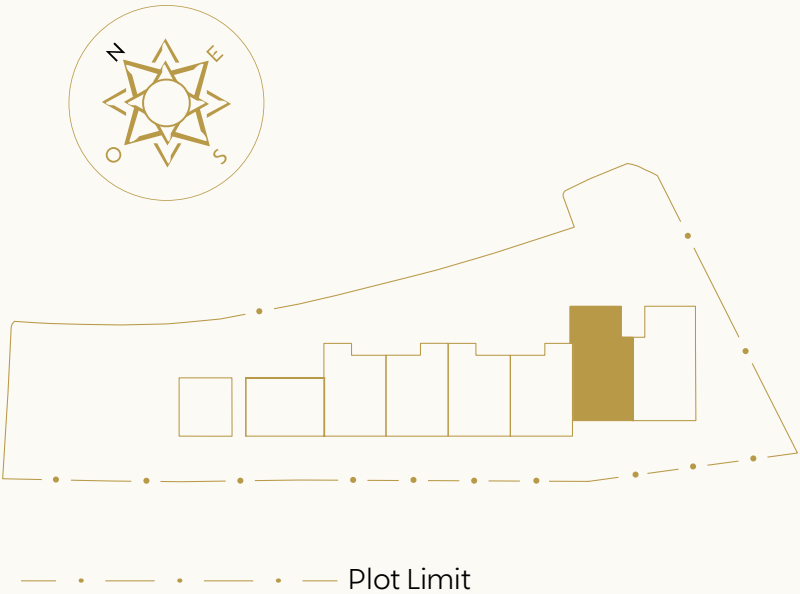


**No.17**

T3  
Block D – Floor 1  
140,23 sqm

# Plan

Block D  
Apartment No.17

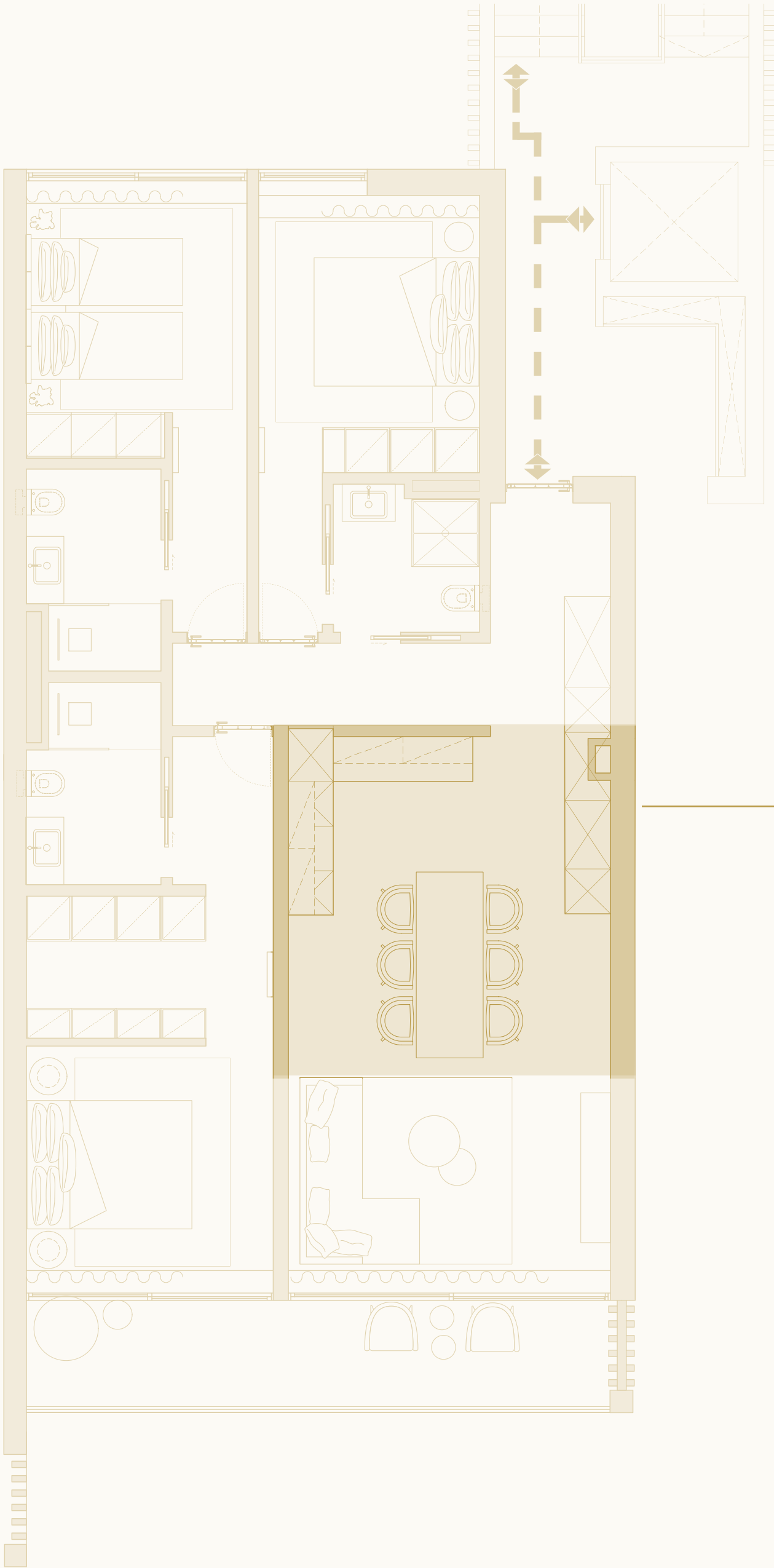
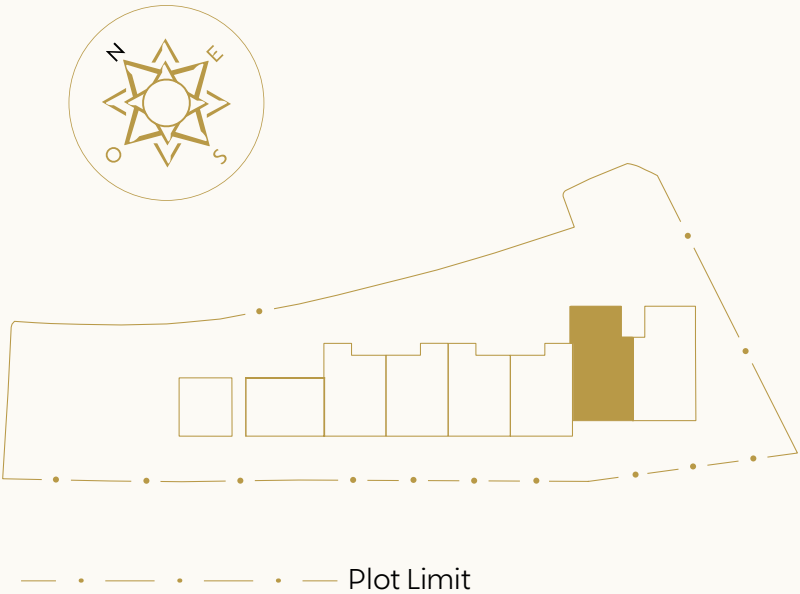


Floor	1
Total Area	140,23 sqm
Gross of THE Apartment	116,69 sqm
Balcony Gross	11,70 sqm



# Kitchen Layout

Block D  
Apartment No.17

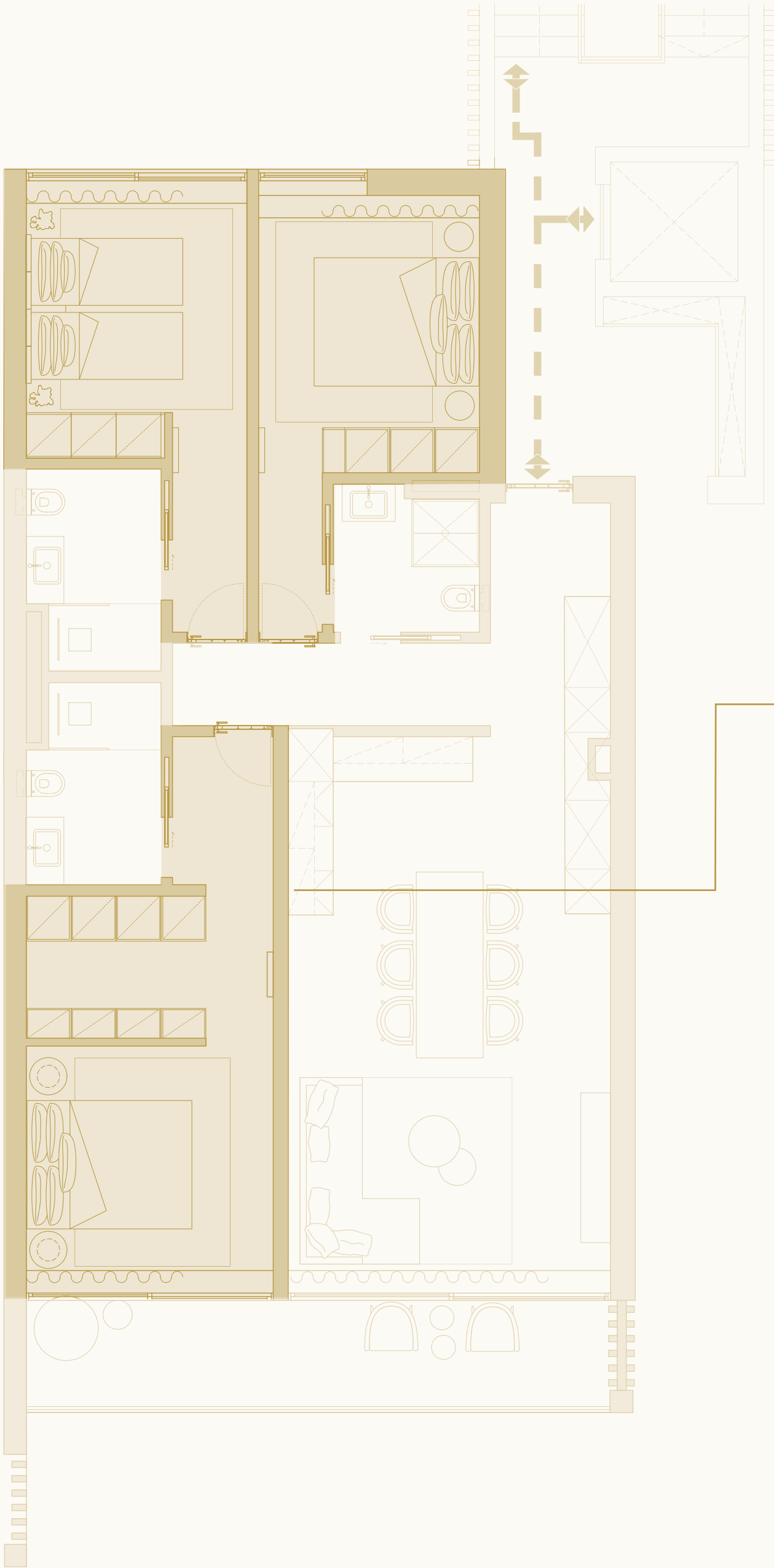
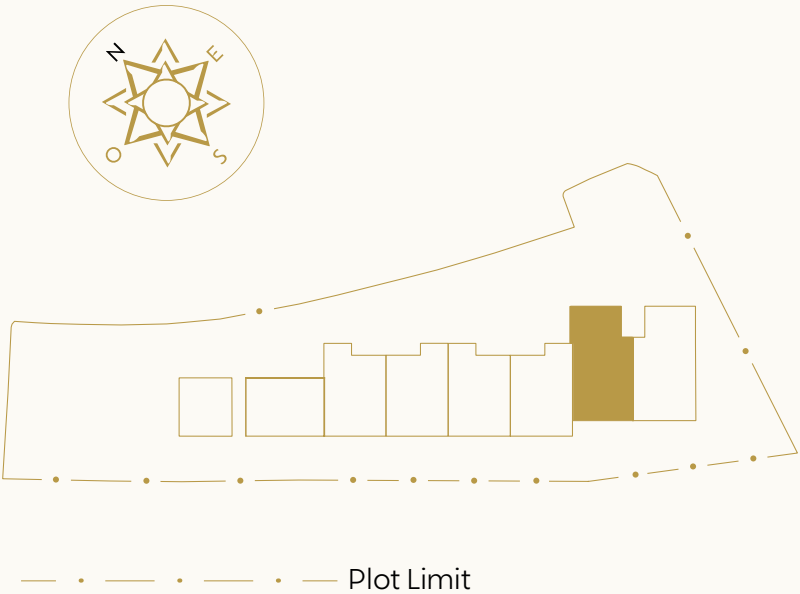


## Kitchen

Each bespoke fully equipped kitchen has been handcrafted by Edwin Loxley in the United Kingdom and installed in Portugal by their specialised fitters onsite. Painted in Farrow & Ball with Dekton worktops, the kitchens are supplied with a lifetime guarantee.

# Bedrooms Layout

Block D  
Apartment No.17



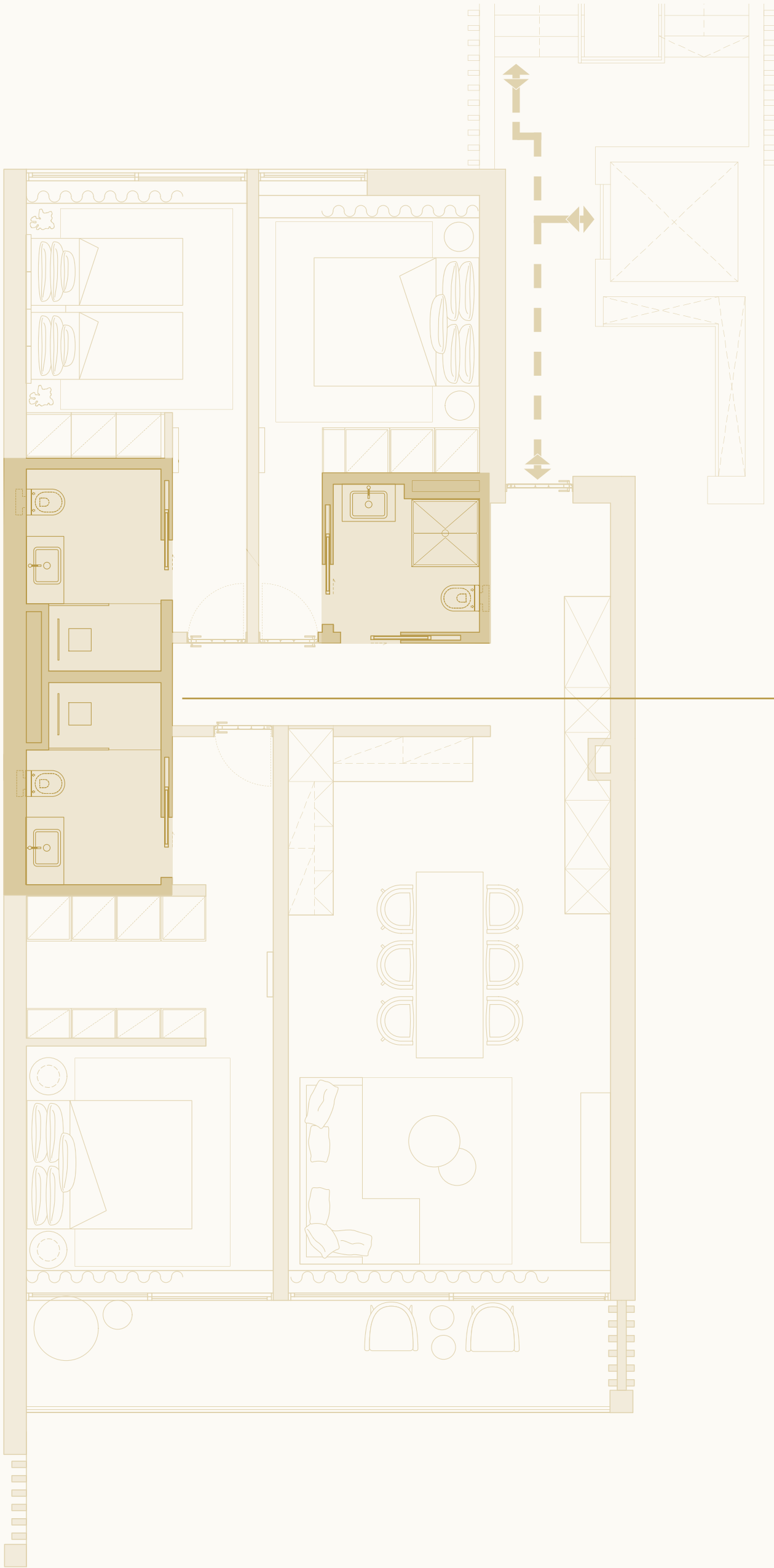
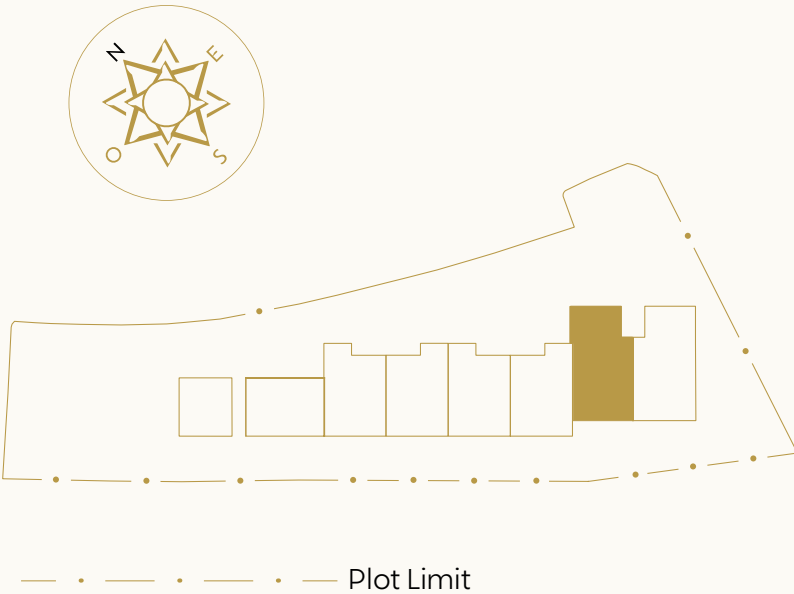
## Three bedrooms

Each bedroom features handcrafted, bespoke wardrobes created by Edwin Loxley in the United Kingdom.

Painted in Farrow & Ball and then installed by their specialised fitters on-site in Portugal.

# Bathrooms Layout

Block D  
Apartment No.17



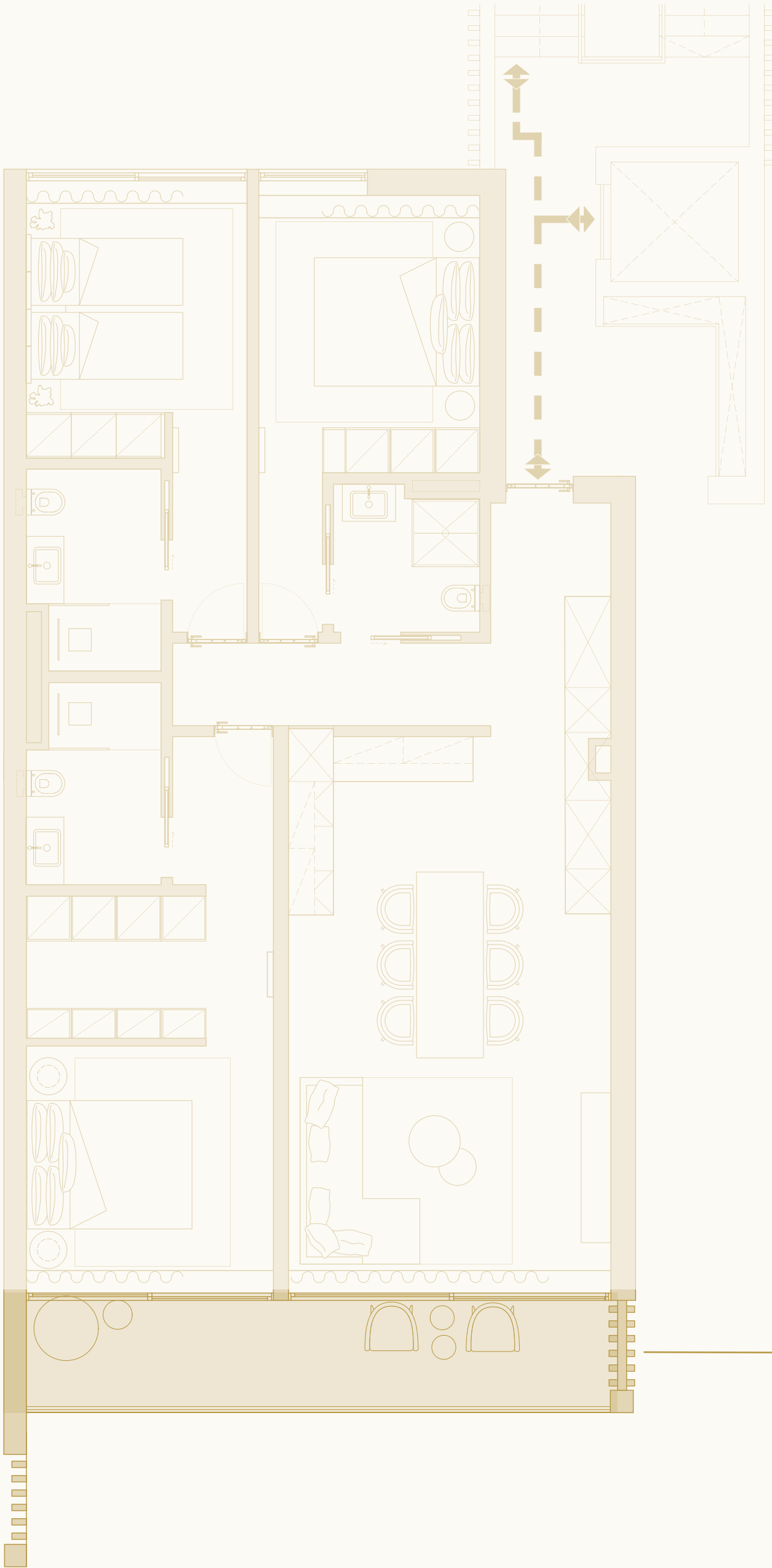
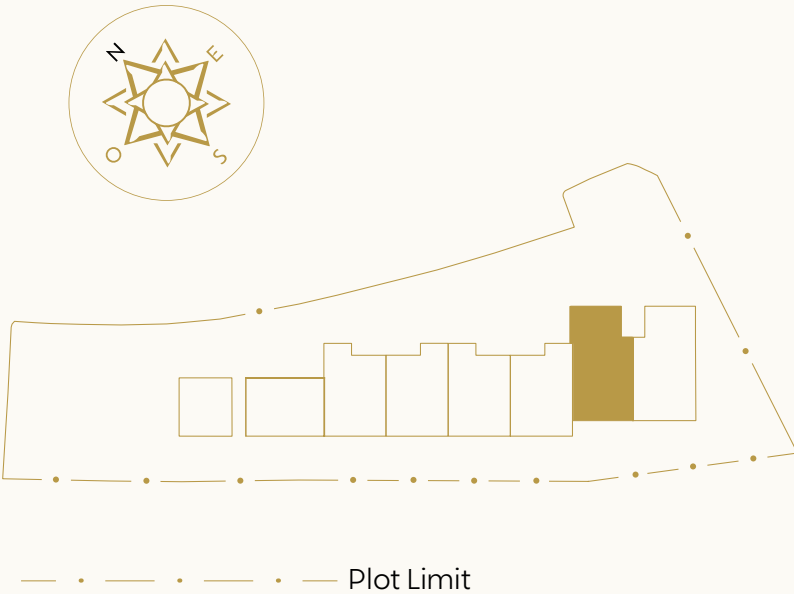
## Three bathrooms

Each bathroom is designed with luxury and comfort in mind, featuring Italian tiles, Corian sinks, and premium Hotbath taps, all crafted with elegant and refined finishes.



# Outdoor Space

Block D  
Apartment No.17



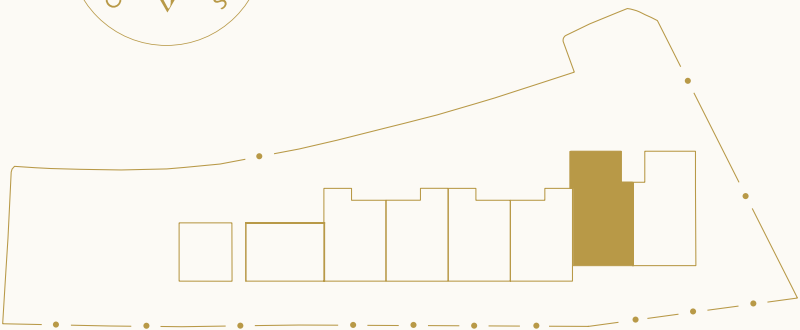
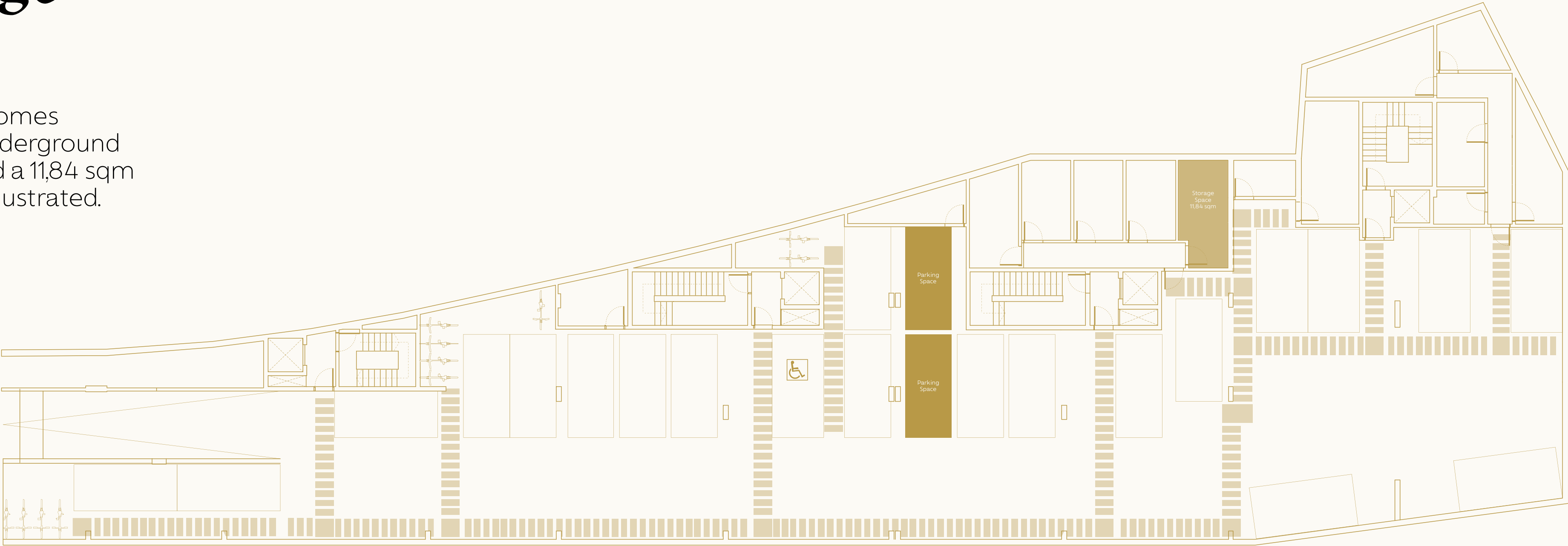
## Private terrace

Private 11,70 sqm terrace overlooks The Park, outdoor furniture pack included.



# Dedicated parking & storage -2 level

Apartment No.17 comes with two secure underground parking spaces and a 11,84 sqm storage locker as illustrated.



Plot Limit



# THE Park

Exclusive use for THE V residents.

Thoughtfully landscaped by Jardim Vista, with mediterranean native plants focusing on low water usage, THE Park features:

- > Communal kitchen herb garden.
- > Communal orchards featuring native fruit trees: lemons, oranges, apricots, peaches, avocado and fig.
- > Sports zone: multi use court and basketball nets walking or running track with fitness zones along the way and a children's play area created from wood to blend into the landscaped.
- > Petanque court.





# THE Exceptional Furniture

Every space is carefully designed using the finest materials with the clear intention of creating a welcoming atmosphere. In exclusive partnership with Pure Allure Interiors, these environments foster a true sense of home.

> Indoor furniture (sofá, deco cushions, carpets, dining table and chairs, suspended lights, mirrors and wall art, candles, beds and bed-side tables).

> Curtains only and wallpaper (fitting included) – Mattresses and fillings

> Two sets of bedlinen and towels per bedroom

**€ 50.000**

Electric polyscreen blinds and kitchen utensils are not included in the package.







# THE V Contact

Contact us to learn more  
about THE V and/or register  
your interest:

M. +351 911 018 157  
E. [sales@thev.pt](mailto:sales@thev.pt)  
[thev.pt](http://thev.pt)



# THE V

Exceptional Living.



Disclaimer: The information and the images contained in this factsheet are indicative and for technical reasons, business or legal matters, may be subject to changes or variations.