



17 Elm Close, Witney

Guide Price



Elm Close

Witney, Witney

A wonderful opportunity to purchase this three-bedroom detached home located in a peaceful cul-de-sac and requiring renovation throughout. Council Tax band: D

Tenure: Freehold

EPC Energy Efficiency Rating: E

EPC Environmental Impact Rating: E

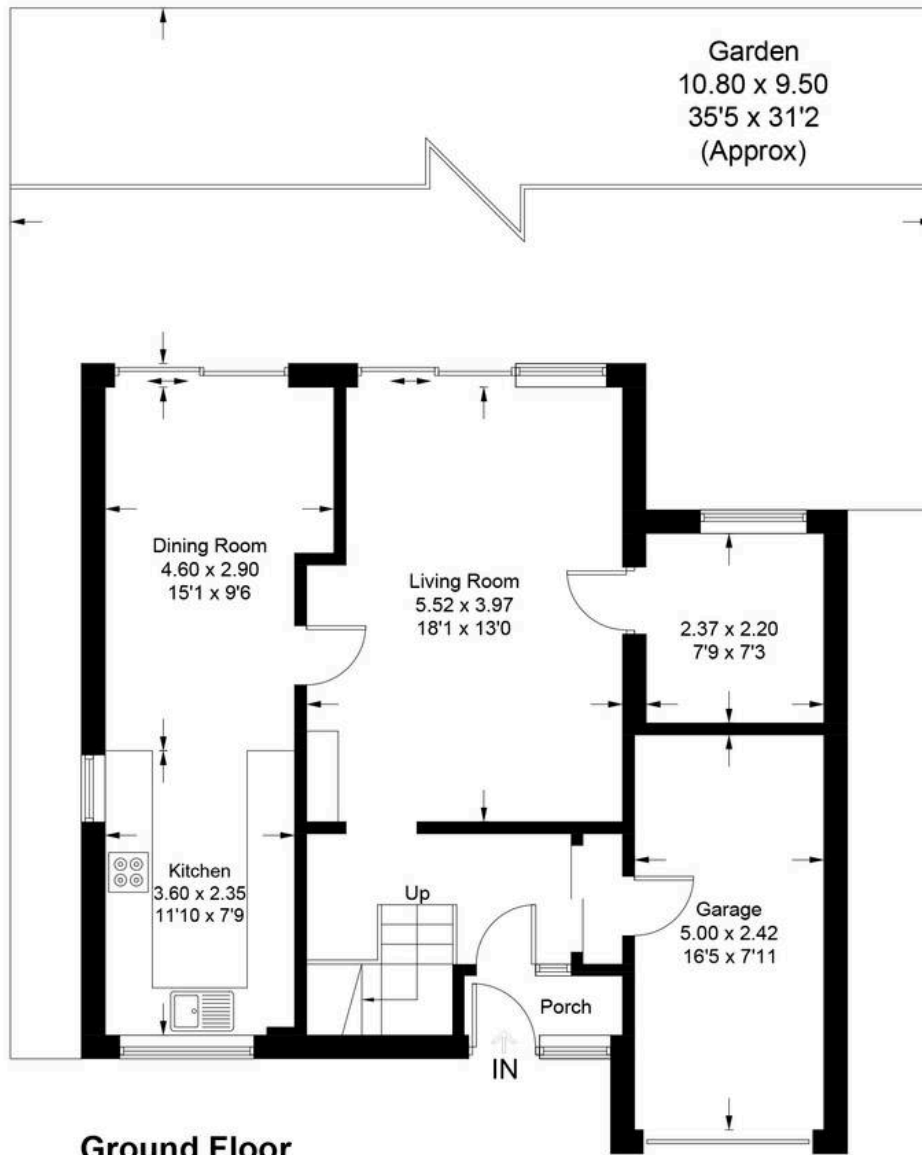
- A wonderful opportunity to purchase this three-bedroom detached home located in a peaceful cul-de-sac.
- Requiring renovation throughout.
- Garage and off-street parking.
- Open plan kitchen/diner with doors leading out to the rear garden.
- Spacious sitting room with sliding doors leading out to the rear garden.
- Modern bathroom with bath and shower over.
- Two double bedrooms and one single bedroom.
- Close to local schools, transport links and shops.



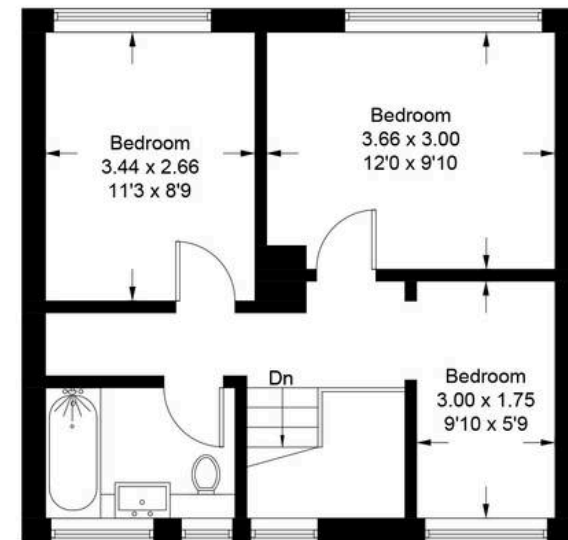


Elm Close - Witney

Approximate Gross Internal Area = 112.6 sq m / 1212 sq ft
(Including Garage)



Ground Floor



First Floor

Illustration for identification purposes only, measurements are approximate,
not to scale. Fourlabs.co © (ID1249871)



Simpsons Witney Branch

4 Langdale Court Witney, Oxfordshire - OX28 6AD

01993 835030 • witney@simpsonsproperty.com • www.simpsonsproperty.com/