



Flat 6, Captains Mill West End, Witney





## Flat 6

A charming three-bedroom top floor apartment located in a historic building offering an abundance of character features with a modern twist.

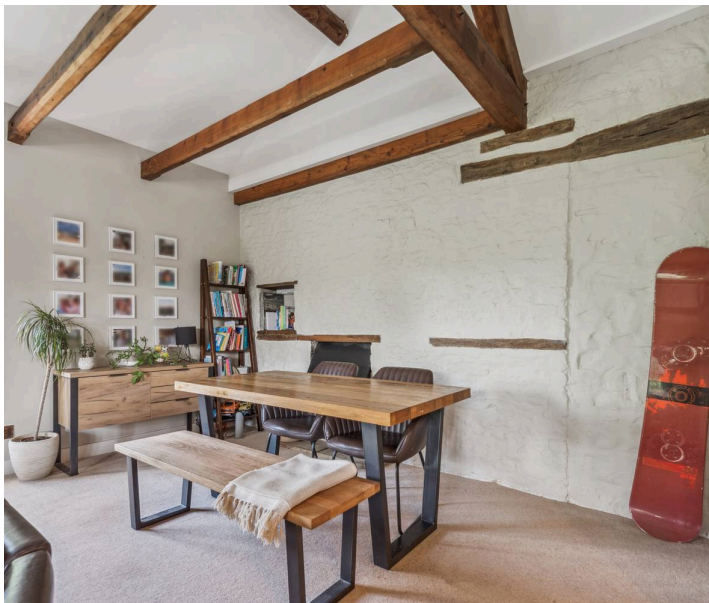
Council Tax band: E

Tenure: Leasehold

EPC Energy Efficiency Rating: C

EPC Environmental Impact Rating: D

- A charming three-bedroom apartment located in this historic building offering an abundance of character features.
- Open plan kitchen/dining/living room with integrated appliances, double aspect windows and exposed beams.
- Spacious master bedroom with double wardrobes and modern ensuite shower room.
- Off-street parking for two cars.
- Family bathroom with bath and shower.
- Communal grounds for residents use.







Approximate Gross Internal Area = 110.0 sq m / 1,184 sq ft



Illustration for identification purposes only,  
measurements are approximate, not to scale.

© CJ Property Marketing





## Simpsons Witney Branch

4 Langdale Court Witney, Oxfordshire - OX28 6AD

01993 835030 • [witney@simpsonsproperty.com](mailto:witney@simpsonsproperty.com) • [www.simpsonsproperty.com/](http://www.simpsonsproperty.com/)