



1 Harvest Way, Witney





## 1 Harvest Way

An impeccably presented former showhome, built by the highly regarded developers Charles Church, located on the edge of the sought-after Madley Park development.

Council Tax band: F

Tenure: Freehold

EPC Energy Efficiency Rating: C

EPC Environmental Impact Rating: C

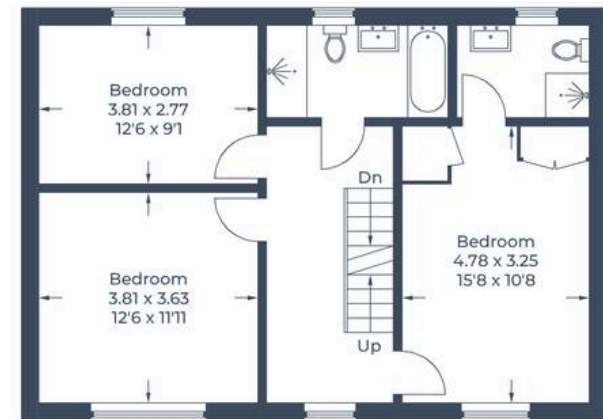
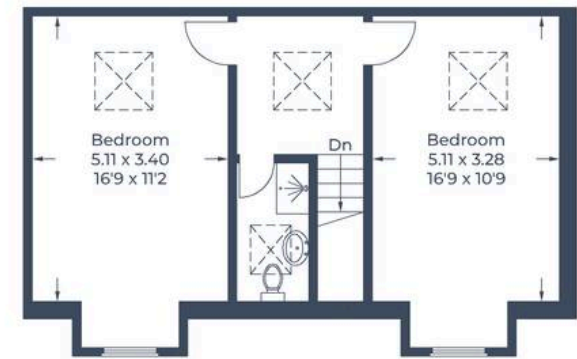
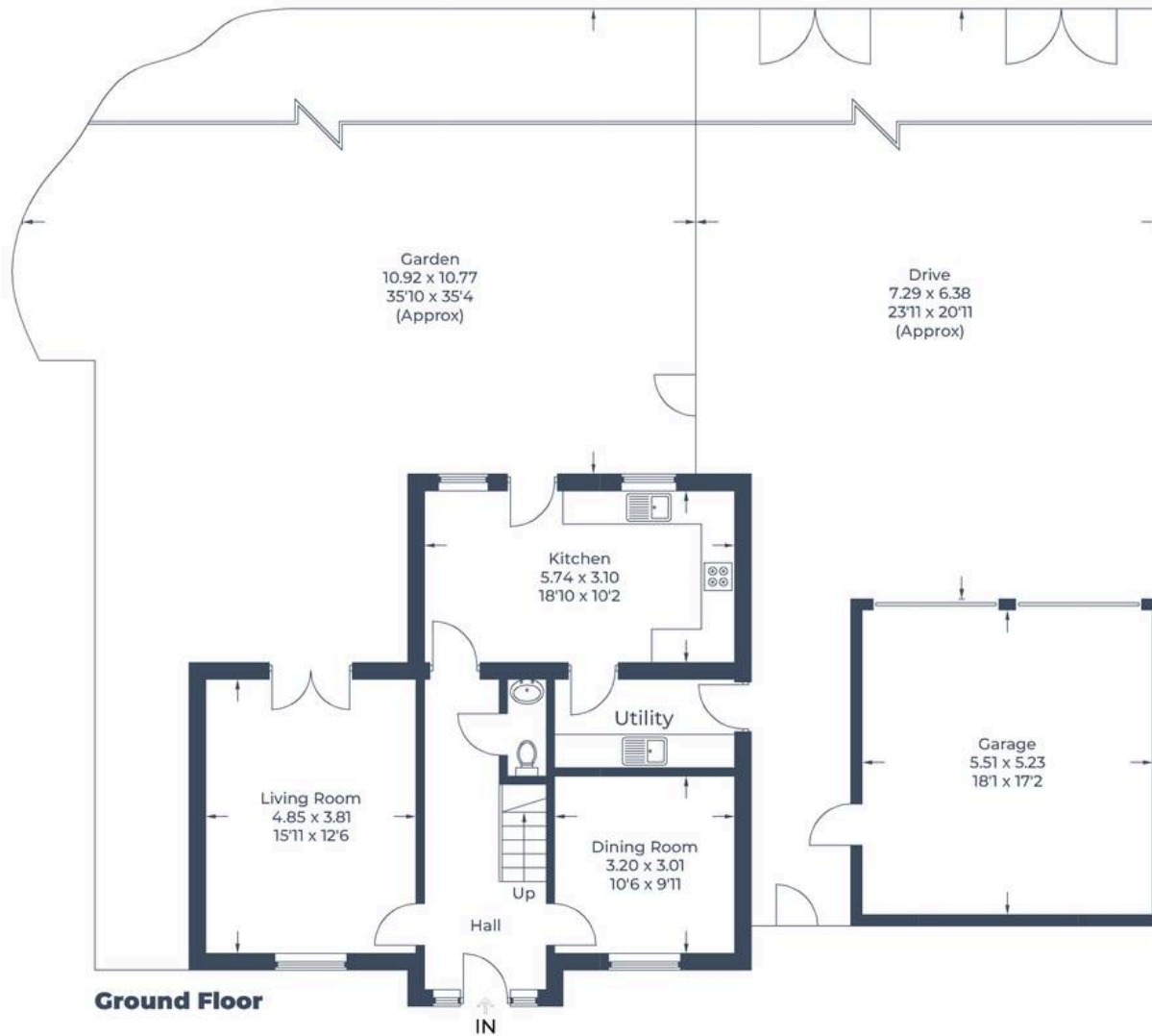
- An immaculately presented five-bedroom detached home spanning over 1800sqft situated on the outskirts of the popular Madley Park development.
- Double garage, EV charger and gated parking.
- Open plan kitchen/dining room with high quality appliances and quartz worktop.
- Two reception rooms to the ground floor including sitting room with feature fireplace and french doors leading to the garden.
- Spacious master bedroom with built in wardrobe and stylish ensuite.
- Four additional double bedrooms.
- Beautifully landscaped garden with patio space.
- Contemporary family bathroom with bath and separate shower.







Approximate Gross Internal Area  
 Ground Floor = 68.4 sq m / 736 sq ft  
 First Floor = 62.5 sq m / 673 sq ft  
 Second Floor = 48.0 sq m / 517 sq ft  
 Garage = 28.9 sq m / 311 sq ft  
 Total = 207.8 sq m / 2,237 sq ft







## Simpsons Witney Branch

4 Langdale Court Witney, Oxfordshire - OX28 6AD

01993 835030 • [witney@simpsonsproperty.com](mailto:witney@simpsonsproperty.com) • [www.simpsonsproperty.com/](http://www.simpsonsproperty.com/)